

---

NEW 2015

**DODGE CHALLENGER**



▷ NEW 2015 CHALLENGER

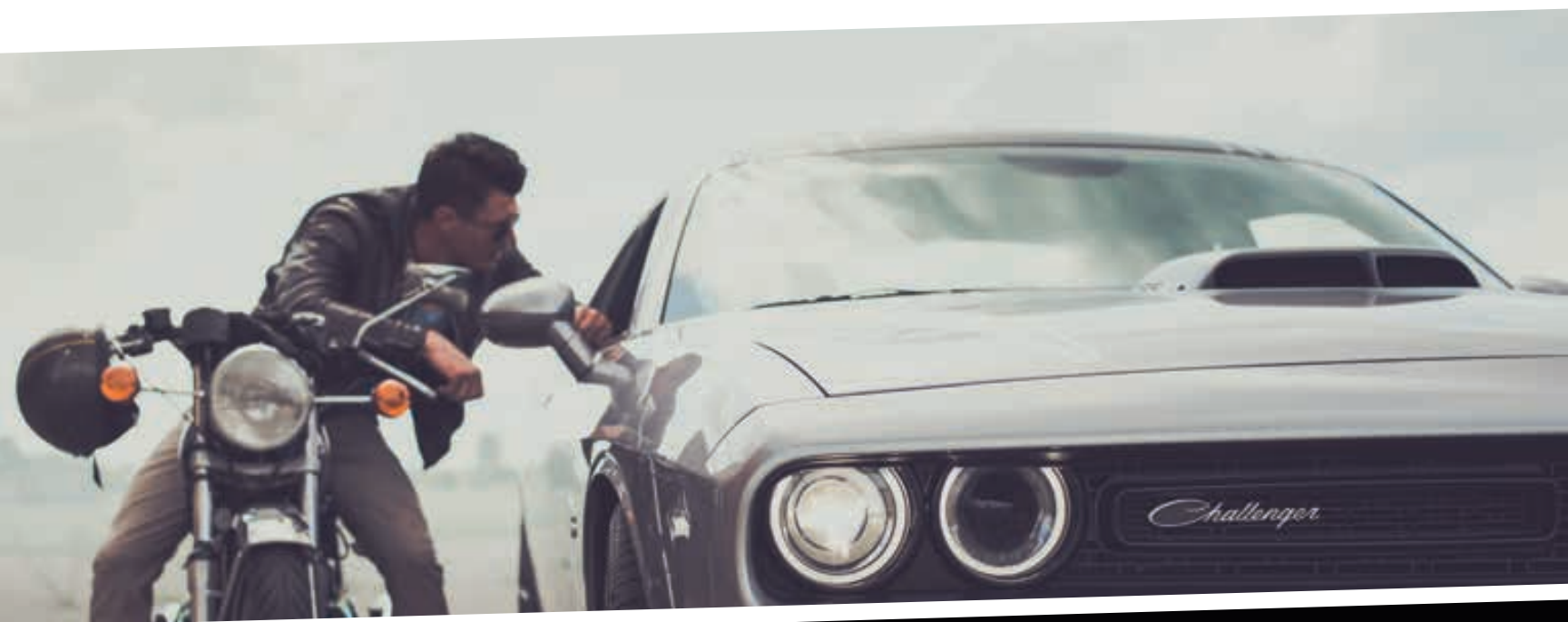


////// MOST POWERFUL MUSCLE CAR. EVER!<sup>[1]\*</sup>



*Redesigning an icon isn't light work. A staunch allegiant is poised at the ready to evaluate every tweak. One false move will ignite a revolt. With designers and engineers who pride themselves as being enthusiasts first, it was capable hands that transformed this modern classic into its newest evolution. This is the new 2015 Dodge Challenger — styled to turn diehards on and outfitted with enough technology to satisfy a new generation of thrill-seekers. One drive assures everyone that its performance is strong enough to uphold the weight of its legendary reputation. As the world's fastest muscle car ever;<sup>[2]</sup> Challenger SRT<sup>®</sup> Hellcat brings powerful bragging rights to the table. The new Supercharged 6.2-liter HEMI<sup>®</sup> V8 unleashes an*





*outrageous 707 horsepower and staggering quarter-mile time in the 10-second range<sup>†</sup> // 1971-inspired heritage styling cues // Class-exclusive<sup>[1]</sup> TorqueFlite<sup>®</sup> eight-speed automatic // All-new interior // Up to 30 mpg highway<sup>‡</sup> with the 3.6-liter engine and 707 horsepower with the Supercharged 6.2-liter SRT<sup>®</sup> HEMI<sup>®</sup> V8 // New 485-horsepower Scat Pack model // Most technologically advanced powertrain<sup>[3]</sup> // Heritage colors // Class-exclusive<sup>[1]</sup> five-link independent rear suspension // Most technologically advanced vehicle in its class<sup>[2]</sup> // Class-exclusive<sup>[1]</sup> seven-inch reconfigurable digital gauge cluster and 8.4-inch touchscreen // Best-in-class<sup>[1]</sup> cargo volume // Only vehicle in its class<sup>[1]</sup> with five-passenger seating.*

\*A note about this brochure: all disclaimers and disclosures can be found on the back cover. <sup>†</sup>NHRA certified 10.8 @ 126 with street legal drag tires. 11.2 @ 125 with production tires. <sup>‡</sup>EPA estimated 19 mpg city/30 mpg hwy. Actual results may vary.

This is more than the fourth-generation Challenger. This is the bringing-forward of a new wave of enthusiasts.

A generation of drivers who cut their teeth on stories of drag strips, horsepower and custom details. But to move forward, it's important to know where you came from. **1970-1974**

The birth of a legend, generation one. Some might say this was the golden age of muscle. The Dodge Challenger was officially introduced in the fall of '69 as the heavyweight contender in a fiercely competitive segment. Challenger came to the table offering customers more content, more performance and more value than its counterparts.

With models like the standard two-door coupe, convertible or coveted R/T, there was one to fit all customers.

Offered with a wide range of available exterior colors, features and interior options, customers had the ability to make their Challenger truly their own. The only thing more impressive than the custom details was

the potent lineup of engines like the 340 Six-Pack V8 with up to 290 horsepower, a 383 Magnum V8 with up to 335 horsepower, 440 Six-Pack with up to 390 horsepower or the fire-breathing 426 HEMI® V8 with up to 425 horsepower. **1978-1983**

The second wave. The re-launched Challenger came to market in a much different way than its predecessor. Raw power without regard to consumption was confronted with the reality of rising gas prices and increasing emissions standards. In order to compete in the ever-growing segment, Dodge produced a new Challenger this time sporting 4-cylinder fuel efficiency.

**2008-2014** After a decades-long hiatus, Dodge Challenger returned and breathed fresh life into the muscle car scene. Revamped with modern technology, efficient performance and the legendary

DNA of its forefather, Challenger instantly became an enthusiast favorite. It was flawlessly sculpted with a lean, low profile, an unmistakable performance hood and throwback honeycomb grille. With a design

inspired by the 1970 Challenger, the return of the HEMI V8 with up to 425 horsepower and rear-wheel drive, it earned serious street respect. **2015**

The rebirth of a legend. The newest generation Challenger powers forward while taking design cues from arguably one of the most coveted Challenger models — the 1971. It stays true to its pony-car roots by offering drivers a bigger fistful of performance through an impressive powertrain lineup. It offers more technology than ever before and an interior that will satisfy

both purists and those looking for the latest must-have features. With the launch of the SRT® Hellcat, Challenger becomes the most powerful muscle car ever<sup>[1]</sup> with an insane 707 horsepower and the fastest

muscle car ever<sup>[2]</sup> with a NHRA certified 10.8-second quarter-mile time.





1970 DODGE CHALLENGER • CHARGER • CORONET • DART • MONACO • POLARA

If you want all the "news" for '70  
...you could be **DODGE MATERIAL.**

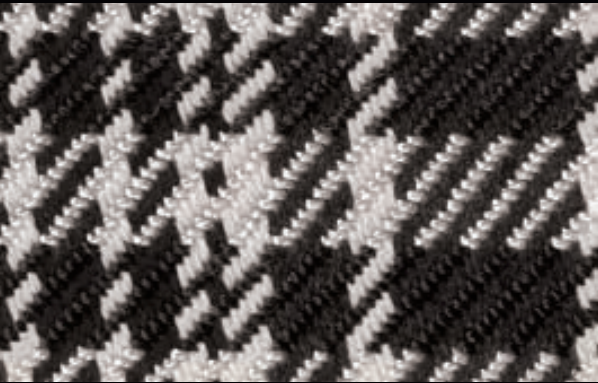
ALL-NEW DODGE CHALLENGER R/T

CHRYSLER RALLY

A photograph of a 1970 Dodge Challenger R/T in a reddish-brown color. A man in a brown jacket and a woman in a white top and dark skirt are standing next to the car. The text "DODGE MATERIAL." is prominently displayed. Below the car, it says "ALL-NEW DODGE CHALLENGER R/T". To the right, there is a partial view of another woman in a leather jacket and the text "CHRYSLER RALLY".



■ Challenger R/T and Challenger 2-door hardtop, optional cloth and vinyl bucket seats. H5 codes.





# 2015

Retro styling cues courtesy of one of the model's most coveted editions include heritage split grille surround, LED halo lighting, larger power-bulge hood and new split LED taillamps.



# 1971

How do you make a classic even more legendary? You give it amped-up attitude so fierce that it's impossible to ignore.







////// Challenger R/T Scat Pack shown in Bright White.

////// Challenger SXT Plus shown in B5 Blue Pearl.

////// Challenger 392 HEMI® Scat Pack Shaker shown in Billet Silver Metallic.





## HIGH-PERFORMANCE / / BIRTHRIGHT

This is what happens when you have 45 years of muscle car heritage coursing through your veins. You get a modern-day marvel that's engineered with more passion, precision and performance than ever before.

**TRACK-PROVEN TUNED CHASSIS** // High-demanding track conditions call for tightly engineered hardware. Challenger R/T Scat Pack and 392 HEMI® Scat Pack Shaker showcase an all-new high-performance tuned chassis that's ready to go.

**SHOCK ABSORBERS** // Bilstein® high-performance shock absorbers are precision-damped to provide a confident, smooth ride for the everyday commute while being fully capable for weekend track duty.

**SUSPENSION** // Challenger offers a variety of options ranging from Sport-tuned to high-performance to the top-of-the-line competitive suspension featuring adaptive damping to suit every driver's preference. A bold combination of movement and staying power comes from a sophisticated suspension geometry and rear-wheel drive. Whether it's the everyday commute or more challenging driving situations, the class-exclusive<sup>[1]</sup> independent five-link rear suspension is finely tuned to help provide superior handling and a comfortable ride. When the rubber meets the road, a lower unsprung mass helps maintain better tire contact with the ground and reduces road noise. Models equipped with a 6.4-liter HEMI V8 feature unique suspension geometry that helps improve balance, cornering ability and steering responsiveness. Exclusive Bilstein shocks and a lowered suspension allows these performers to achieve 0.93g on the skid pad — on par with some of the world's best-handling cars. The three-mode Bilstein Adaptive Damping System on Challenger SRT® models takes drivers from Street Mode (sporty) to Sport Mode (firm) to Track Mode (firmest, max handling).

**AGGRESSIVE FRONT- AND REAR-CAMBER GEOMETRY** // Performance handling requires maximum road-holding grip, and Challenger Scat Pack models deliver with aggressive front- and rear-camber geometry. Set at  $-1.0$  degrees in the front and  $-1.75$  degrees in the rear, Challenger is set up for high-speed cornering with its tires leaning inboard at the top relative to the body.

**BRAKES** // Standard four-wheel antilock disc brakes and available Brembo® brakes. Improved Brembo brake cooling and fade performance comes courtesy of wind tunnel-designed brake cooling ducts that direct airflow to vented rotors for consistent stopping power.



392 HEMI

//// The class-exclusive<sup>[1]</sup> TorqueFlite<sup>®</sup> eight-speed automatic transmission delivers up to an 11-percent fuel efficiency improvement and world-class precision. Available Dodge Performance Pages, paddle shifters and standard Sport Mode help lower shift times from 350 ms to 160 ms, depending on model.

//// When the TorqueFlite is mated to the Supercharged 6.2-liter SRT<sup>®</sup> Hellcat HEMI<sup>®</sup> V8 it's fortified to withstand the groundbreaking 707 horsepower and 650 lb-ft of torque unleashed by the engine. Enhancements include additional pinion gears and five more clutch pack discs.

//// The passion of the manual is alive and well. Challenger also offers the intensity of a heavy-duty TREMEC<sup>®</sup> six-speed manual transmission that boasts an external vehicle-mounted oil cooler. Standard on R/T and SRT models.



# POWER

WITHOUT  
COMPROMISE



**////// 3.6L DOHC PENTASTAR® VARIABLE VALVE TIMING (VVT) 24V V6 WITH 305 HP AND 30 MPG HWY.\*** This robust 3.6-liter V6 satisfies your rational side with up to 30 mpg highway\* and keeps your emotional side charged with 305 horsepower and 0 – 60 in an estimated six seconds. It's the combination of a new TorqueFlite® eight-speed transmission, fully independent dual-cam phasing, sequential port fuel injection, and high-flow intake and exhaust ports that result in this exceptional blend of high torque and fuel efficiency.

**////// SUPER TRACK PAK.** Challenger was born to perform. Opt for the Super Track Pak for an edgier drive and even tighter handling. Package highlights include performance-tuned steering, Sport suspension, four-wheel heavy-duty disc brakes, 3.07 or 3.90 rear axle ratio (based on engine and transmission), 20-inch Hyper Black aluminum wheels, P245/45ZR20 Goodyear® Eagle F1 Performance Supercar tires, and three-mode Electronic Stability Control (ESC)<sup>[4]</sup> that can be completely deactivated for the ultimate track experience. Available on every SXT and R/T.

*up to*

**30** *MPG HWY\**



**////// 5.7L HEMI® V8 WITH UP TO 375 HP, 410 LB-FT OF TORQUE AND 25 MPG HWY:†**

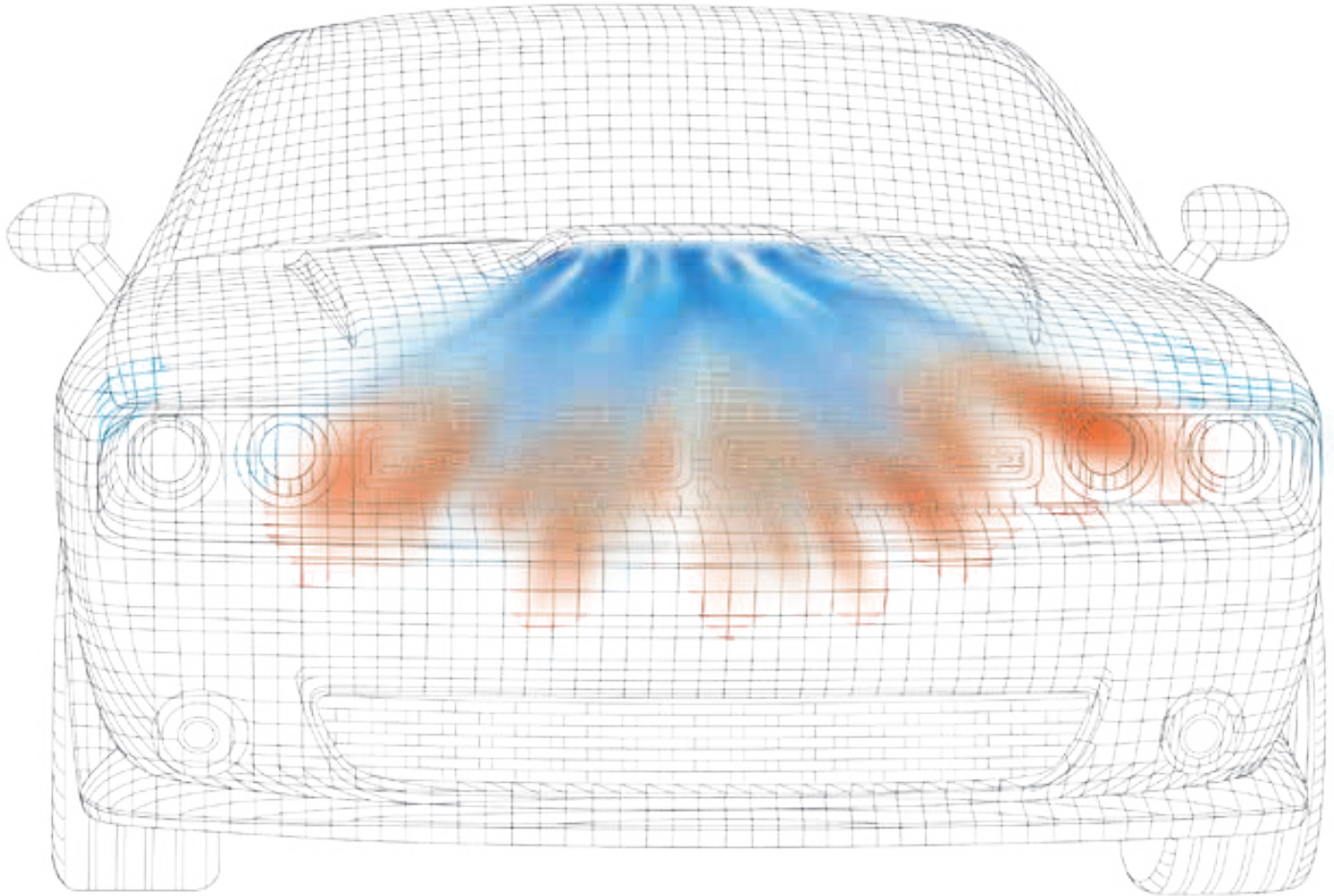
Dodge Challenger and HEMI, two legendary names that still fuel the fantasies of muscle car enthusiasts. Pair the 5.7-liter HEMI V8 with a standard TREMEC® six-speed manual (375 hp, 410 lb-ft of torque) and it takes you from 0 – 60 mph in the low five-second range while intoxicating exhaust notes purr at idle and roar under acceleration. When equipped with the TorqueFlite® eight-speed automatic (372 hp, 400 lb-ft of torque) and Fuel Saver Technology, eight cylinders transition to four when full power is not required to help provide an increase in fuel efficiency while also delivering a 13.2-second quarter-mile time.

**////// 6.4L HEMI V8, 485 HP 475 LB-FT OF TORQUE AND UP TO 25 MPG HWY:‡**

For those with an appetite for raw power, the available HEMI V8 delivers a performance feast — 485 horsepower, 475 lb-ft of torque, an impressively flat torque curve and a 0 – 60 time in the low four-second range. When equipped with the TorqueFlite eight-speed, Fuel Saver Technology deactivates four cylinders when eight are not needed, creating a double threat of power and efficiency. The incredibly aggressive exhaust note floating from the pipes is just sweet icing on top.

////// Challenger SXT Plus shown in Billet Silver Metallic with Super Track Pak and Challenger R/T Plus shown in B5 Blue Pearl.





**485<sup>HP</sup>**

//// MARKS THE RETURN OF THE SCAT PACK

///// Challenger R/T Scat Pack  
shown in TorRed.



///// Challenger R/T Scat Pack Shaker shown in Billet Silver Metallic.



**POWER WITH THE CHOPS TO BACK IT UP** ///// Challenger didn't become an icon overnight. It's dominated the road since the golden age of muscle. When the only thing better than owning a muscle car was owning one unlike any other. A time when you didn't show up unless your car was tricked out with parts, stripes and a Scat Pack sticker on the quarter-glass that served as a tell that your Challenger was hiding something substantial under the hood. It's time for a rebirth. It's time to awaken the legends: 2015 Challenger R/T Scat Pack and Challenger 392 HEMI® Scat Pack Shaker.

**THEY'VE EARNED THEIR STRIPES** ///// These vehicles are for those seeking the ultimate combination of raw power, pure performance and authentic attitude. 392 HEMI Scat Pack Shaker is the real deal, straight from the factory. We're talking functional, fully floating, open-element Shaker hood scoop with cold air induction. A Mopar® Cold Air Intake, conical air filter and legendary 6.4-liter HEMI V8 engine churn out 485 horsepower and 475 lb-ft of torque. Because power means nothing without control, four-piston Brembo® brakes, 3-mode Electronic Stability Control (ESC)<sup>[4]</sup> with Full-Off Mode, and high-performance suspension with 20x9-inch wheels and performance steering are standard.

The 392 HEMI Scat Pack Shaker shows its supremacy with a 392 HEMI badge on the Shaker hood scoop, bold hood-to-tail stripes and a retro fender badge.



# THE MOST POWERFUL MUSCLE CAR. EVER. <sup>[1]</sup>

It starts with the boldest of statements — the most powerful and fastest muscle car ever!<sup>[2]</sup> And it duly delivers 707 horsepower, 650 lb-ft of torque, a bewildering quarter-mile time\* of 10.8 seconds and a top speed of 199 mph. There is no other production car that can match the hard-core power of the 2015 Dodge Challenger SRT<sup>®</sup> Hellcat propelled by the all-new Supercharged 6.2-liter SRT Hellcat HEMI<sup>®</sup> V8. Drivers can opt to mate this powerplant to the all-new TorqueFlite<sup>®</sup> eight-speed automatic transmission that's uniquely designed to withstand the groundbreaking horsepower and torque or, to the high-performance Viper modified TREMEC<sup>®</sup> six-speed manual transmission that boasts an internal cooling pump and external, vehicle-mounted oil cooler. \*NHRA certified 10.8 @ 126 with street legal drag tires. 11.2 @ 125 with production tires.



Professional driver. Closed course.

# 707

HORSEPOWER

THE MOST POWERFUL MUSCLE CAR. EVER.<sup>(1)</sup>



////// Challenger SRT® Hellcat shown in TorRed with standard 20- x 9.5-inch lightweight forged aluminum wheels with available Brass Monkey finish.



---

## SRT® HELLCAT & SRT 392

---

This isn't a show dog with no bite to back up its bark. It's the Supercharged 6.2-liter SRT Hellcat HEMI® V8 and this fierce feline lives up to the hype. With more than 90 percent of its content upgraded, it's completely capable of handling the raw power churning under its hood. The breakthrough engine features all-new internals with a forged-steel crankshaft and induction-hardened bearing surfaces, a specially tuned crank damper tested to 13,000 rpms, high-strength forged-alloy pistons coupled to powder-forged connecting rods, high-load capacity bushings and diamond-like carbon-coated piston pins. Premium-grade heat-treated aluminum cylinder heads with die-cast aluminum rocker covers are optimized for superior thermal conductivity.



The all-new Supercharger features the technology of a 2,300 cc/rev blower, with internal charge coolers and an integrated electronic bypass valve that regulates boost pressure to a maximum of 80 kPa (11.6 psi) with the capability to flow approximately 30,000 liters of air per minute. That's enough to suck the air out of a 10- x 13-ft room in one minute. The twin screw rotors are specially treated to accommodate tighter internal tolerances between the rotors and improve overall performance. Air is delivered into the engine's air box via the Air Catcher Inlet Port located in the driver's-side parking lamp and lower fascia. A 92-mm throttle controls air flow into the Supercharger; air then flows through the Supercharger screws, the air charger coolers and then into the inlet port — another unique Challenger SRT Hellcat feature.

When you've got power like this, it's a given that the exterior demands some exclusive extras. A Viper inspired aluminum hood crowns SRT Hellcat, while the functional scoop is flanked by an equally functional set of air extractors. The dual extractors effectively remove heat from the engine compartment and reduce air turbulence. There are bold SRT Hellcat badges on the fenders, so there's no mistaking SRT Hellcat from anything else on the road.

SRT Hellcat's uniqueness doesn't end there. Owners are handed both a Red and Black key fob at delivery. The Black key restricts power to 500 horsepower, while the Red key unlocks the full 707 horsepower.



68° Fan, A/C On-Air 10:10 NW 85° out 72°

**Horsepower**

700+ HP: Modifies the horsepower output of the engine to 700+  
 500 HP: Modifies the horsepower output of the engine to 500

**Traction**

TRACK: Minimal traction control, minimal stability control  
 SPORT: Reduced traction control, reduced stability control  
 STREET: Full traction control, full stability control

**Custom Mode Set-Up**

Power: 700+ / 500  
 Trans: Track / Sport / Street  
 Paddle Shifters: On / Off  
 Traction: Track / Sport / Street  
 Susp: Track / Sport / Street

Pages: Track Sport Custom Default X

Horsepower: 700+  
 Transmission: Track  
 Paddle Shifters: On  
 Traction: Track  
 Suspension: Track

Track Set-Up Race Options Valet Eco

Radio Media Controls Climate Nav Phone & Apps



////// Challenger SRT® 392 shown in Billet Silver Metallic with available Black twin center stripe.





Challenger SRT® 392 bulked up in the off-season. It makes its 2015 debut with an even more powerful, more robust, naturally aspirated 6.4-liter SRT HEMI® V8 engine now boasting 485 horsepower and 475 lb-ft of torque. Both SRT 392 and SRT Hellcat let drivers personalize their drive experience via the all-new Drive Modes feature. Drive Modes are pre-configured for Sport, Track and Default settings, but also feature a Custom setting for a uniquely tailored experience of the power, transmission, paddle shifters, traction control and suspension.

//// Custom — Allows the driver to personalize the vehicle's performance

//// Sport — Delivers increased vehicle performance capability over the Default Mode

//// Track — Delivers maximum vehicle performance capability on smooth, dry surfaces

//// Default — Activates automatically when starting the vehicle, delivering a sporty and comfortable ride

Inside, both SRT 392 and SRT Hellcat sport a blend of premium materials, race-inspired technology and heritage-influenced design cues. The standard SRT performance steering wheel features full-circumference heat while the standard high-performance heated and ventilated seats keep you in place with aggressively bulked-up bolsters with high-grip Alcantara® suede inserts. Performance stats and vehicle data can be customized and viewed in more than 125 potential configurations between the seven-inch reconfigurable digital gauge cluster and Performance Pages viewable from the standard 8.4-inch touchscreen.



BREMBO® // The fastest muscle car in history<sup>[2]</sup> needs world-class stopping power. Usher in the largest front brake package ever to be offered on a Chrysler Group passenger vehicle. It starts with lacquered Red Brembo brake calipers at each corner with 15.4-inch six-piston front two-piece and 13.8-inch four-piston rear vented and slotted rotors. These robust plates are optimized for performance, and the two-piece modular design aids heat dissipation to facilitate effective and repeatable cooling.

  
**brembo**



An exploded view of a supercharged V8 engine. The top part shows a polished, ribbed supercharger housing. Below it is the cylinder head assembly, which is dark grey and features two valves per cylinder. The bottom part shows the piston and connecting rod assembly, which is a bright orange color. The pistons have a distinctive crown shape. The entire assembly is shown in a clean, studio-like setting.

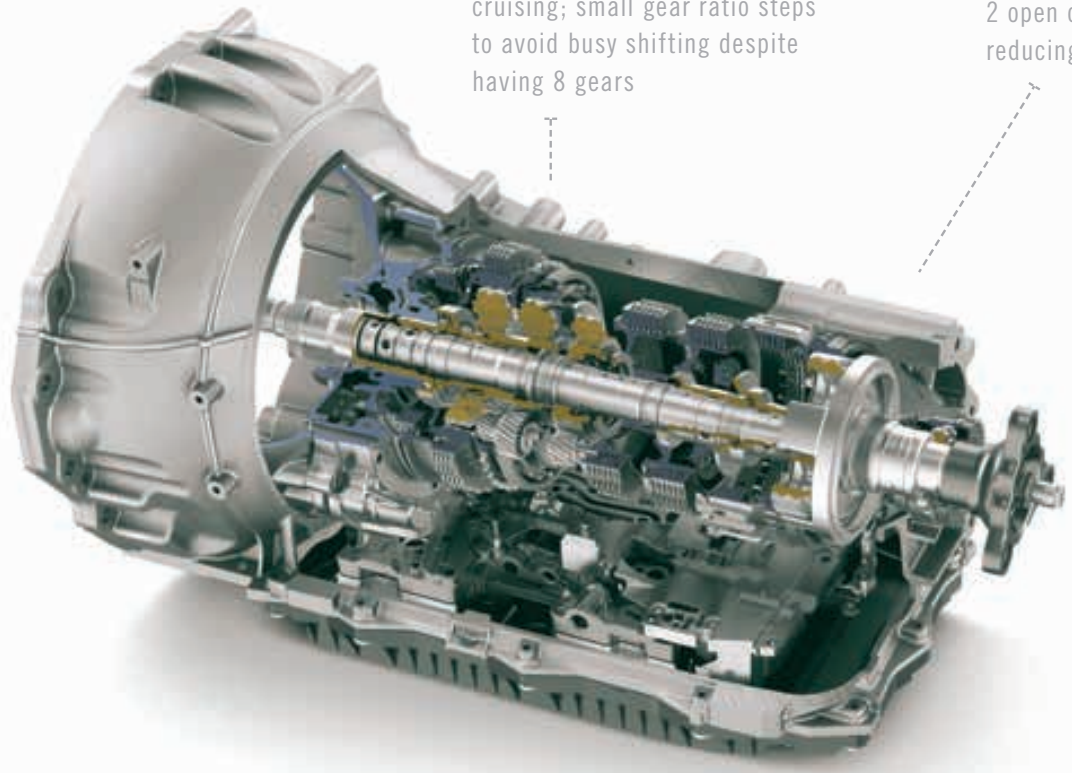
*ENGINE / TECHNOLOGY*

*EXPLODED VIEW OF THE SUPERCHARGED  
6.2-LITER SRT® HELLCAT HEMI® V8 ENGINE.*



//// 4 gearset design: wide ratio spread to cover everything from acceleration to highway cruising; small gear ratio steps to avoid busy shifting despite having 8 gears

//// 5-clutch Pack Design with only 2 open clutches in any gear for reducing drag losses



*Challenger is the only vehicle in its class<sup>11</sup> to offer the available TorqueFlite® eight-speed automatic transmission.*







## SEAMLESS: RINGS OF FIRE

They say lightning doesn't strike twice. We disagree. Dodge designers harnessed the essence of one of the most revered Challenger models in history to create the new 2015. This modern-day icon is the spiritual successor to the '71. You can see the throwback cues in the menacing all-new projector headlamps with quad halo LED surrounds, the heritage split grille surround and the hood's power-bulge and functional inlets. Walk around this rebirthed legend and you'll find it looks as intimidating from the rear as it does from the front. But that doesn't mean Challenger can't throw other motorists a bone every now and again. As you cross over into the passing lane and back again, Challenger gives other drivers a breathtaking parting shot — bold new seamless split LED taillamps. Their design nods to the past while projecting a contemporary appearance.





**BRAGGING RIGHTS : COME STANDARD**

////// Some available equipment shown.





//// Some available equipment shown.



PASSION /////  
RUNS /////  
DEEP /////  
A horizontal line with three vertical drop-downs connects the three text elements.

MUSCLE FROM THE INSIDE OUT /////  
More than 40 years of passion and innovation meld modern technology and throwback design seamlessly. The result is an interior that equally matches Challenger's hard-core exterior. The focus of this completely refreshed cockpit was the driver. Everything has been mapped and calculated for convenience, including the performance-inspired steering wheel with available paddle shifters and push-button start. Heritage-inspired Tic-Toc-Tach gauges recall the original Challenger interior as does the shifter, door panels with premium soft-touch materials, and driver-centric center console featuring standard genuine stamped aluminum trim.

As the only vehicle in its class<sup>[1]</sup> with five-passenger seating and with more interior volume than any other muscle car,<sup>[5]</sup> there's room for everyone.

/////  
Challenger R/T Plus shown with Black Nappa leather trim.





MPH

# ICONIC

////// Heritage-inspired Tic-Toc-Tach gauges.



////// Challenger R/T Scat Pack shown with Black Nappa leather trim with Alcantara® Ruby Red suede inserts and Scat Pack logo.





## ALL SYSTEMS GO

Its aura may be throwback, but its mechanics are pure 21<sup>st</sup>-century. As the most technologically advanced car in its class,<sup>[3]</sup> Challenger offers plenty of class-exclusive features, including the seven-inch reconfigurable digital gauge cluster. Buttons on the steering wheel let you scan through hundreds of different vehicle configurations and customize what information you see and how you see it.

# RECONFIGURABLE DIGITAL GAUGE CLUSTER



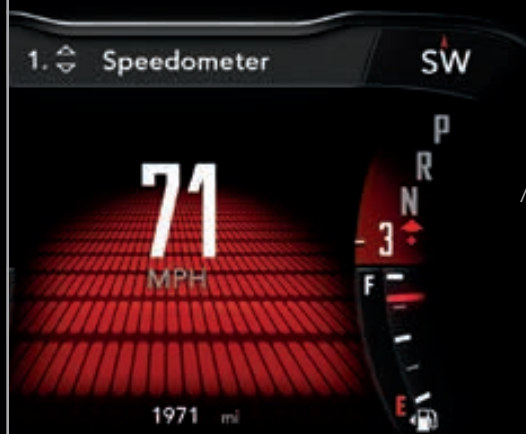
///// Monitor lateral and longitudinal G-forces.\*



///// Measure standing-start 0 – 60 and quarter-mile times as well as reaction times and previous attempts.\*



///// Receive turn-by-turn display directions.\*



///// Information is displayed in full color with rich graphics.

\*Screens shown are optional depending on model and package.





**PERFORMANCE PAGES**

**21<sup>ST</sup>-CENTURY TECHNOLOGY** //// A touchscreen Uconnect® system, as large as an available class-exclusive<sup>(1)</sup> 8.4 inches, houses available Dodge Performance Pages, which feature everything from Launch Control to G-force meter to drag-race timers. This real-time data can also be displayed on the new standard seven-inch reconfigurable digital gauge cluster nestled between the dashboard gauges. For an even greater degree of personalization, Challenger's standard Sport Mode with available customizable settings can also be accessed through the touchscreen and allows for adjusted steering feel, transmission shifting, throttle mapping, traction control and paddle shifters.

//// Challenger R/T Plus with Super Track Pak shown in TorRed.





////// Engineered with technology, Uconnect® brings a range of communication and entertainment services directly to your Challenger. Intuitive and customizable, available Uconnect systems include a touchscreen display up to 8.4 inches and steering wheel-mounted controls that operate features like a Bluetooth® enabled phone, Voice Command<sup>[6]</sup> navigation, radio, cruise control and more.

Impressive in-vehicle connectivity through available Uconnect Access. Access the following offerings with the simplicity of Voice Command<sup>[6]</sup> and fingertip control:

9-1-1 CALL<sup>[7]</sup> In the event of an emergency, a Call button on your rearview mirror connects you to local authorities.

ROADSIDE ASSISTANCE CALL<sup>[8]</sup> Flat tire or out of gas? The rearview mirror Assist button connects you to Roadside Assistance Service, which pinpoints your location. Additional fees may apply.

STOLEN VEHICLE ASSISTANCE<sup>[9]</sup> If your vehicle is stolen, Uconnect can provide its location to aid police recovery.

THEFT ALARM NOTIFICATION<sup>[10]</sup> Choose to receive a text or email alert anytime your vehicle's theft alarm is activated.





PHONE // // // Voice-activated communication lets you talk on your Bluetooth® phone nearly hands-free,<sup>[6]</sup> and up to 1,000 phone address book entries<sup>[11]</sup> are synced every time you get into your Challenger.

WEB<sup>[12]</sup> // // // Put the power of high-speed Internet in your Challenger with Mopar® Web. Passengers can use multiple devices at the same time, and there's no need for cell cards or software. Available. Subscription required. Sold separately.

VOICE COMMAND<sup>[6]</sup> // // // Use your voice to select AM/FM radio stations or SiriusXM® Satellite Radio<sup>[13]</sup> channels, make calls, select navigation directions or record voice memos. English-, French- and Spanish-compatible. Available.

ENTERTAINMENT // // // Get the sound going via MP3s and available features like remote USB port, audio jack, hard-disc storage, Voice Command,<sup>[6]</sup> SiriusXM Satellite Radio<sup>[13]</sup> (your first year of service is included) and Bluetooth Streaming Audio.

NAVIGATION // // // Provides enhanced GPS navigation and destination entry via Voice Command<sup>[6]</sup> and SiriusXM Traffic<sup>[13]</sup> for real-time traffic information on the go. Your first five years of SiriusXM Traffic service are included. Available.

# 70+

////// **With more than 70 standard and available safety, security and technology features,** you can rest assured a high degree of advanced automotive technology went into making Challenger a thrill ride. Likewise, a high degree of advanced technology went into making each of those drives more secure.





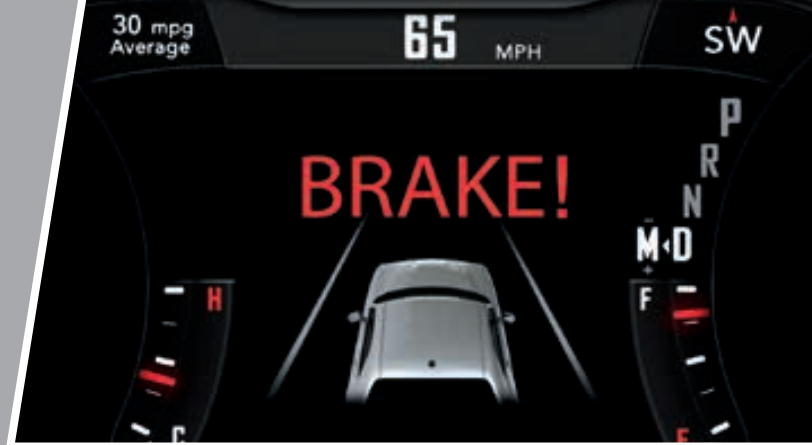
///// FORWARD COLLISION WARNING (FCW)<sup>[14]</sup> Radar sensors detect when your vehicle may be approaching an object too rapidly, alerting you with both an audible chime and a visual warning. Available.

///// ADAPTIVE CRUISE CONTROL (ACC)<sup>[15]</sup> This system automatically adjusts cruising speed to maintain a preset distance between your vehicle and the one ahead. Available.

///// PARKVIEW® REAR BACK-UP CAMERA<sup>[16]</sup> WITH DYNAMIC GRID LINES. The system displays an accurate visual reference of what is behind your vehicle when in Reverse. Audible chimes alert you when nearing objects. Available.

///// BLIND SPOT MONITORING (BSM)<sup>[17]</sup> WITH REAR CROSS-PATH DETECTION<sup>[16]</sup> Dual radar sensors constantly monitor driver blind spots, providing notification of an encroaching vehicle via illuminating icons on the sideview mirrors and audible chimes. The system includes Rear Cross-Path Detection, which monitors for vehicles/objects in perpendicular relationships to the rear of the vehicle. It's invaluable when backing out of tight parking spots. Available.

///// RAIN-SENSING WINDSHIELD WIPERS. System sensors automatically detect moisture on the windshield and activate the wipers. Available.





## COLOR:CHOICES

Available Colors — Left (front to back): Sublime Green, Billet Silver Metallic, Ivory Tri-Coat Pearl, TorRed, Phantom Black Tri-Coat Pearl, Redline Red Tri-Coat Pearl. Right (front to back): Bright White, B5 Blue Pearl, Granite Crystal Metallic, Jazz Blue Pearl, Pitch Black.



# STRIPES



## COLOR/STRIPE AVAILABILITY

	[1] SXT BODYSIDE STRIPE	[1] SXT PLUS BODYSIDE STRIPE	[2] R/T AND R/T PLUS HOOD GRAPHIC	[3] R/T CLASSIC BODYSIDE STRIPE	[4] SCAT PACK BUMBLEBEE STRIPE	[5] SHAKER CENTER STRIPE	[6] SRT® 392 TWIN CENTER STRIPE
REDLINE RED TRI-COAT PEARL	●	●	●	●○	●		●●
TORRED	●	●	●	●○	●	●	●●
SUBLIME GREEN			●	●○	●	●	
B5 BLUE PEARL		●	●	●○	●	●	
JAZZ BLUE PEARL	●	●	●	●○	●		
GRANITE CRYSTAL METALLIC	●	●	●	●○●	●	●	●●
BILLET SILVER METALLIC	●	●	●	●●	●	●	●
PITCH BLACK	●	●	●	●○●	●	●	●
PHANTOM BLACK TRI-COAT PEARL		●	●	●○●	●		
BRIGHT WHITE	●	●	●	●●	●	●	●●
IVORY TRI-COAT PEARL		●	●	●●	●		

● = Black Satin-Gloss ○ = Stone White High-Gloss ● = Red High-Gloss ● = Silver Satin-Gloss

# WHEEL CHOICES



- 1 // // // 18-inch Satin Carbon aluminum (Standard on SXT)
- 2 // // // 20-inch polished aluminum with Graphite pockets (Standard on SXT Plus and R/T Plus)
- 3 // // // 20-inch Satin Carbon aluminum (Standard on R/T; Optional on SXT with Super Sport Group [SS/T] or Super Track Pak)
- 4 // // // 20x9-inch polished aluminum with Black pockets and Satin finish (Standard on R/T Shaker and R/T Plus Shaker)
- 5 // // // 20-inch Classic II polished forged aluminum (Standard on R/T Classic)
- 6 // // // 20-inch Hyper Black aluminum (Included with Super Track Pak on SXT Plus, R/T, R/T Plus; Optional on R/T Classic)
- 7 // // // 20x9-inch polished aluminum with Black pockets and Satin finish (Standard on R/T Scat Pack and 392 HEMI® Scat Pack Shaker)
- 8 // // // 20x9-inch Matte Black lightweight forged aluminum (Optional on R/T Plus, R/T Classic, R/T Scat Pack and 392 HEMI Scat Pack Shaker)
- 9 // // // 20x9.5-inch Matte Black lightweight forged aluminum (Standard on SRT® Hellcat; also available in Hyper Black and “Brass Monkey” [Dark Bronze])



## INTERIOR CHOICES



1 /// Sedoso/Houndstooth Premium cloth Sport seat. Black. Also available in Sedoso/Tungsten Torque Premium cloth in Black/Tungsten — Standard on SXT and R/T

2 /// Sedoso/Ballistic Performance cloth seats with Tungsten accent stitching. Black — Standard on R/T Shaker and R/T Scat Pack. Also available in Sedoso/Ballistic Performance cloth with embroidered logo and Tungsten accent stitching. Black — included with Scat Pack Appearance Group on R/T Scat Pack

3 /// Nappa leather trim with accent stitching and Nappa perforated inserts. Black/Pearl. Also available in Black and Dark Ruby/Ruby Red — Standard on SXT Plus and R/T Plus

4 /// Nappa leather trim with Alcantara® suede bolsters, Tungsten accent stitching and Alcantara perforated suede inserts with embroidered logo Performance seats. Black. Also available in Black/Ruby Red — Optional on R/T Plus with R/T Classic Package

## INTERIOR CHOICES CONT.



5



6



7



8

5 /// Nappa leather trim with Alcantara® suede bolsters, Ruby Red accent stitching and Alcantara perforated suede inserts with embroidered logo Performance seats. Black/Ruby Red. Also available in Black — Optional on 392 HEMI® Scat Pack Shaker, included with Leather Interior Group on R/T Scat Pack (embroidered logo requires Scat Pack Appearance Group)

6 /// Nappa leather trim with Ruby Red accent stitching and Nappa Axis II perforated inserts with graduated plow through Performance seats. Black/Ruby Red. Also available in Black — Standard on R/T Plus Shaker and 392 HEMI Scat Pack Shaker

7 /// Nappa leather with Alcantara suede bolsters, Alcantara perforated suede inserts and Tungsten accent stitching with embroidered SRT® logo Performance seats. Black, shown with optional Red seat belt. Also available in Black/Ruby Red — Standard on SRT 392 and SRT Hellcat (Available Red or Black seat belt options on SRT models with Black interiors)

8 /// Premium Laguna leather with perforated leather inserts and embossed SRT logo Performance seats. Sepia. Also available in Black\* — Optional on SRT 392 and SRT Hellcat (Available Red or Black seat belt options on SRT models with Black interiors)

\*Late availability.



# CHALLENGER: CHOICES

## CHALLENGER SXT



### POWERTRAIN

- 3.6L DOHC Pentastar® Variable Valve Timing (VVT) 24V V6  
305 horsepower and 268 lb-ft of torque  
TorqueFlite® 8-speed automatic transmission

### SELECT STANDARD EQUIPMENT

- 18-inch Satin Carbon aluminum wheels
- Bright fuel-filler door
- Split LED taillamps
- Integrated dual bright exhaust tips
- Sport leather-trimmed steering wheel with audio controls
- 6-way power driver's seat with power lumbar adjuster
- Dark Brushed II interior accents
- 5-inch Uconnect® touchscreen system
- Uconnect Voice Command<sup>(15)</sup> with Bluetooth®
- 7-inch TFT reconfigurable cluster display
- 6-speaker audio system
- Dual-Zone Automatic Temperature Control
- 1-touch-down power windows
- Speed-sensitive power locks
- Cruise control
- Automatic headlamps
- Daytime running lights
- Six air bags<sup>(18)</sup>
- Keyless Enter™ 'n Go™ with push-button start
- 4-wheel ABS
- Electronic Stability Control (ESC)<sup>(14)</sup>
- Sport Mode
- Performance suspension
- Premium cloth sport seats

### SELECT OPTIONAL EQUIPMENT

- Uconnect 8.4-inch touchscreen system with 3D navigation and Uconnect Access<sup>(19)</sup> apps
- SiriusXM® Satellite Radio<sup>(13)</sup>
- Power sunroof
- Bodyside stripes
- 245/45ZR20 All-Season Performance tires
- Cold Weather Group
- Driver Convenience Group
- Sound Group
- Super Sport Group SS/T
- Super Track Pak

## CHALLENGER SXT PLUS



### POWERTRAIN

- 3.6L DOHC Pentastar VVT 24V V6  
305 horsepower and 268 lb-ft of torque  
TorqueFlite 8-speed automatic transmission

### ADDS TO SXT

- 20-inch polished aluminum wheels with Graphite pockets
- Projector fog lamps
- Rear body-color spoiler
- Nappa leather-trimmed Performance seats
- Heated and ventilated front seats
- Heated steering wheel
- Power tilt/telescoping steering column
- Uconnect 8.4-inch touchscreen system with Uconnect Access<sup>(19)</sup> apps
- SiriusXM Satellite Radio<sup>(13)</sup>
- 6 premium speakers with 276-watt amplifier
- Hectic Mesh interior accents
- Bright pedals
- ParkView® Rear Back-Up Camera<sup>(16)</sup>
- ParkSense® Rear Park Assist<sup>(16)</sup>
- Universal Garage Door Opener
- Performance steering, brakes and suspension

### SELECT OPTIONAL EQUIPMENT

- Uconnect 8.4-inch touchscreen system with 3D navigation and Uconnect Access<sup>(19)</sup> apps
- Power sunroof
- Bodyside stripes
- 245/45ZR20 All-Season Performance tires
- Driver Convenience Group
- Sound Group II
- Premium Sound Group
- Technology Group
- Super Track Pak

## CHALLENGER R/T



### POWERTRAIN

- 5.7L HEMI Variable Valve Timing (VVT) V8  
375 horsepower and 410 lb-ft of torque  
TREMEC® 6-speed manual transmission
- 5.7L HEMI VVT V8 with Fuel Saver Technology  
372 horsepower and 400 lb-ft of torque  
TorqueFlite 8-speed automatic transmission

### ADDS TO SXT

- 20-inch Satin Carbon aluminum wheels
- Projector fog lamps
- Rear decklid spoiler
- R/T badge
- Bright pedals
- 3.90 axle ratio/antispin differential
- Antilock performance disc brakes
- Compact spare tire

### SELECT OPTIONAL EQUIPMENT

- Uconnect 8.4-inch touchscreen system with 3D navigation and Uconnect Access<sup>(19)</sup> apps
- SiriusXM Satellite Radio<sup>(13)</sup>
- Power sunroof
- Modern hood stripe
- 245/45ZR20 All-Season Performance tires
- Cold Weather Group
- Driver Convenience Group
- Sound Group
- Super Track Pak

## CHALLENGER R/T SHAKER



### POWERTRAIN

- 5.7L HEMI VVT V8  
375 horsepower and 410 lb-ft of torque  
TREMEC 6-speed manual transmission
- 5.7L HEMI VVT V8 with Fuel Saver Technology  
372 horsepower and 400 lb-ft of torque  
TorqueFlite 8-speed automatic transmission

### ADDS TO R/T

- 20-inch polished aluminum wheels with Black pockets and Satin finish
- Gloss Black grille surround
- Functional Shaker hood with cold air induction
- Mopar® Cold Air Intake with conical air filter
- Satin Black fuel-filler door, spoiler and Shaker graphics
- High-performance Goodyear® Eagle F1 tires
- High-performance Premium cloth seats
- Dodge performance steering wheel
- Shaker dash plaque and startup splash screen
- 3-mode Electronic Stability Control (ESC)<sup>(14)</sup> with Full-Off Mode
- Performance steering, brakes and suspension
- Super Track Pak

### SELECT OPTIONAL EQUIPMENT

- Uconnect 8.4-inch touchscreen system with 3D navigation and Uconnect Access<sup>(19)</sup> apps
- SiriusXM Satellite Radio<sup>(13)</sup>
- Power sunroof
- 245/45ZR20 All-Season Performance tires
- Cold Weather Group
- Driver Convenience Group
- Sound Group

# CHALLENGER: CHOICES CONT.

## CHALLENGER R/T PLUS



Shown with Super Track Pak.

### POWERTRAIN

- 5.7L HEMI® VVT V8  
375 horsepower and 410 lb-ft of torque  
TREMEC® 6-speed manual transmission
- 5.7L HEMI VVT V8 with Fuel Saver Technology  
372 horsepower and 400 lb-ft of torque  
TorqueFlite® 8-speed automatic transmission

### ADDS TO R/T

- 20-inch polished aluminum wheels with Graphite pockets
- Rear body-color spoiler
- Nappa leather-trimmed Performance seats
- Heated and ventilated front seats
- Heated steering wheel
- Hectic Mesh interior accents
- Bright pedals
- Uconnect® 8.4-inch touchscreen system with Uconnect Access<sup>(19)</sup> apps
- SiriusXM® Satellite Radio<sup>(13)</sup>
- 6 premium speakers with 276-watt amplifier
- ParkView® Rear Back-Up Camera<sup>(16)</sup>
- ParkSense® Rear Park Assist<sup>(15)</sup>
- Universal Garage Door Opener

### SELECT OPTIONAL EQUIPMENT

- Uconnect 8.4-inch touchscreen system with 3D navigation and Uconnect Access<sup>(19)</sup> apps
- Power sunroof
- Modern hood stripe
- 245/45ZR20 All-Season Performance tires
- 20x9-inch Matte Black lightweight forged aluminum wheels
- Driver Convenience Group
- Sound Group II
- Premium Sound Group
- Technology Group
- Super Track Pak

## CHALLENGER R/T CLASSIC



### POWERTRAIN

- 5.7L HEMI VVT V8  
375 horsepower and 410 lb-ft of torque  
TREMEC 6-speed manual transmission
- 5.7L HEMI VVT V8 with Fuel Saver Technology  
372 horsepower and 400 lb-ft of torque  
TorqueFlite 8-speed automatic transmission

### ADDS TO R/T PLUS

- 20-inch Classic II polished and forged aluminum wheels
- High Intensity Discharge (HID) headlamps
- Dual R/T side stripes
- Fender-mounted Challenger script badge
- High-performance Nappa leather-trimmed seats with suede inserts and R/T logo

### SELECT OPTIONAL EQUIPMENT

- Uconnect 8.4-inch touchscreen system with 3D navigation and Uconnect Access<sup>(19)</sup> apps
- Power sunroof
- 245/45ZR20 All-Season Performance tires
- 20x9-inch Matte Black lightweight forged aluminum wheels
- Driver Convenience Group
- Sound Group II
- Premium Sound Group
- Technology Group
- Super Track Pak

## CHALLENGER R/T PLUS SHAKER\*



### POWERTRAIN

- 5.7L HEMI VVT V8  
375 horsepower and 410 lb-ft of torque  
TREMEC 6-speed manual transmission
- 5.7L HEMI VVT V8 with Fuel Saver Technology  
372 horsepower and 400 lb-ft of torque  
TorqueFlite 8-speed automatic transmission

### ADDS TO R/T PLUS

- 20-inch polished aluminum wheels with Black pockets and Satin finish
- Gloss Black grille surround
- Functional Shaker hood with cold air induction
- Mopar Cold Air Intake with conical air filter
- Satin Black fuel-filler door, spoiler and Shaker graphics
- High-performance Goodyear Eagle F1 tires
- High-performance Nappa leather-trimmed seats with graduated plow through inserts and Shaker logo
- Unique accent door trim panels
- Shaker dash plaque and startup splash screen
- Dodge Performance Pages
- Dodge performance steering wheel
- Performance steering, brakes and suspension
- 3-mode ESC<sup>(4)</sup> with Full-Off Mode
- Super Track Pak

### SELECT OPTIONAL EQUIPMENT

- Uconnect 8.4-inch touchscreen system with 3D navigation and Uconnect Access<sup>(19)</sup> apps
- Power sunroof
- 245/45ZR20 All-Season Performance tires
- Driver Convenience Group
- Sound Group II
- Premium Sound Group
- Technology Group

## CHALLENGER R/T SCAT PACK



Shown with Scat Pack Appearance Group.

### POWERTRAIN

- 392-cu-in 6.4L HEMI V8  
485 horsepower and 475 lb-ft of torque  
TREMEC 6-speed manual transmission
- 392-cu-in 6.4L HEMI V8  
485 horsepower and 475 lb-ft of torque  
TorqueFlite 8-speed automatic transmission

### ADDS TO R/T

- 20x9-inch polished aluminum wheels with Black pockets and Satin finish
- Performance front splitter
- Scat Pack badging
- Rear Satin Black spoiler
- Gloss Black Brembo® four-piston brakes
- Active exhaust
- High-performance Premium cloth seats
- Uconnect 8.4-inch touchscreen system with Uconnect Access<sup>(19)</sup> apps
- Dodge Performance Pages
- 180-mph speedometer
- High-performance suspension with Bilstein® shocks
- Antispin differential rear axle
- ParkView® Rear Back-Up Camera<sup>(16)</sup>
- ParkSense® Rear Park Assist<sup>(15)</sup>
- Universal Garage Door Opener
- Tire Service Kit
- Severe Duty II engine cooling
- Engine oil cooler

### SELECT OPTIONAL EQUIPMENT

- Uconnect 8.4-inch touchscreen system with 3D navigation and Uconnect Access<sup>(19)</sup> apps
- Power sunroof
- Modern hood stripe
- 245/45ZR20 Performance tires
- 20x9-inch Matte Black lightweight forged aluminum wheels
- 20x9-inch Hyper Black forged aluminum wheels
- Driver Convenience Group
- Sound Group II
- Technology Group
- Leather Interior Group
- Scat Pack Appearance Group

\*Late availability.



# CHALLENGER: CHOICES CONT.

## CHALLENGER 392 HEMI® SCAT PACK SHAKER\*



### POWERTRAIN

- 392-cu-in 6.4L HEMI V8  
485 horsepower and 475 lb-ft of torque  
TREMEC® 6-speed manual transmission
- 392-cu-in 6.4L HEMI  
485 horsepower and 475 lb-ft of torque  
TorqueFlite® 8-speed automatic transmission

### ADDS TO R/T SCAT PACK

- Gloss Black grille surround
- Functional Shaker hood with cold air induction
- Mopar® Cold Air Intake with conical air filter
- Unique Scat Pack fender and 392 HEMI Shaker scoop badging
- Satin Black fuel-filler door, spoiler and Shaker graphics
- High-performance Nappa leather-trimmed seats with graduated plow through inserts and Shaker logo
- Heated and ventilated front seats
- Dodge performance steering wheel
- Power tilt/telescoping steering column
- Shaker dash plaque and startup splash screen
- Unique accent door-trim panels

### SELECT OPTIONAL EQUIPMENT

- Uconnect® 8.4-inch touchscreen system with 3D navigation and Uconnect Access<sup>[19]</sup> apps
- Power sunroof
- 245/45ZR20 Performance tires
- Driver Convenience Group
- Sound Group II
- Technology Group
- Scat Pack Appearance Group

\*Late availability.

## CHALLENGER SRT® 392



### POWERTRAIN

- 392-cu-in 6.4L HEMI V8  
485 horsepower and 475 lb-ft of torque  
TREMEC 6-speed manual transmission
- 392-cu-in 6.4L HEMI V8 with Fuel Saver Technology  
485 horsepower and 475 lb-ft of torque  
TorqueFlite 8-speed automatic transmission

### ADDS TO R/T SCAT PACK

- 20x9.5-inch Hyper Black lightweight forged aluminum wheels
- 3-mode adaptive damping suspension
- Black grille
- High Intensity Discharge (HID) headlamps
- Power folding, heated multifunction exterior mirrors
- Unique aluminum hood with center air intake
- Rear body-color spoiler
- P275/40ZR20 Pirelli® All-Season tires
- Brembo® Red 6-piston 15.4-inch front calipers
- Antilock 4-wheel disc brakes
- Heated/ventilated front premium Nappa leather/Alcantara® Performance seats with accent stitching and SRT logo
- Premium door trim panels with ambient lighting
- Heated, leather flat-bottom steering wheel
- Power tilt/telescoping steering column
- Luxury front and rear floor mats
- Hectic Mesh interior accents
- 18-speaker premium audio system with Harman Kardon® 900-watt amplifier
- SRT performance pages
- Configurable SRT Drive Modes
- SRT Track Experience
- Universal Garage Door Opener
- ParkView® Rear Back-Up Camera<sup>[16]</sup>
- Blind Spot Monitoring<sup>[17]</sup> and Rear-Cross Path Detection<sup>[16]</sup>

### SELECT OPTIONAL EQUIPMENT

- Uconnect 8.4-inch touchscreen system with premium navigation, AM/FM, Bluetooth®, Uconnect Access<sup>[19]</sup> with 1-year subscription and SiriusXM® Satellite Radio<sup>[13]</sup> with 1-year subscription
- High-performance Laguna leather seats with accent stitching and embossed SRT logo
- Red seat belts (requires Black interior)
- Power sunroof
- Twin center stripes (Black or Silver)
- Engine block heater
- P275/40ZR20 Pirelli Performance Summer tires
- Technology Group

## CHALLENGER SRT HELLCAT



### POWERTRAIN

- Supercharged 6.2L SRT HEMI Hellcat V8  
707 horsepower and 650 lb-ft of torque  
High-performance TREMEC 6-speed manual transmission
- Supercharged 6.2L SRT HEMI Hellcat V8  
707 horsepower and 650 lb-ft of torque  
TorqueFlite high-performance 8-speed automatic transmission

### ADDS TO SRT 392

- 20x9.5-inch Matte Black lightweight forged aluminum wheels
- Unique aluminum hood with center air intake and dual heat extractors
- Bifunctional HID headlamps with integrated air catcher inlet
- Auto High-Beam Headlamp Control
- Rain-sensitive windshield wipers
- SRT Hellcat fender badge
- Black fuel-filler door
- Rear Black performance spoiler
- Dark Engine Turn interior accents
- 200-mph speedometer and unique gauges
- Power hydraulic steering
- 3.70 rear axle ratio
- Competition suspension

### SELECT OPTIONAL EQUIPMENT

- Uconnect 8.4-inch touchscreen system with premium navigation, AM/FM, Bluetooth, Uconnect Access<sup>[19]</sup> with 1-year subscription and SiriusXM Satellite Radio<sup>[13]</sup> with 1-year subscription
- High-performance Laguna leather seats with accent stitching and embossed SRT logo
- Red seat belts (requires Black interior)
- Power sunroof\*
- Black Satin hood
- P275/40ZR20 Pirelli Performance Summer tires
- 20x9.5-inch "Brass Monkey" Dark Bronze lightweight forged aluminum wheels
- Engine block heater

\*Late availability.

## DODGE GOODS



Check out an extensive line of gifts and gear for the Dodge enthusiast. From authentic apparel to die-cast replica cars for the collector, as well as electronics and office supplies, all lifestyle items are as bold as your Dodge vehicle. Refer to [dodge.com/life](http://dodge.com/life) for our full product lineup.

VISIT [DODGE.COM/LIFE](http://DODGE.COM/LIFE)



# PACKAGES

**COLD WEATHER GROUP** – includes heated front seats, heated steering wheel and 180-amp alternator

**LEATHER INTERIOR GROUP** – includes leather/suede performance seats, heated and ventilated front seats, heated steering wheel, power tilt and telescoping steering column and Satin Silver and Hectic Mesh bezels (R/T Scat Pack)

**SUPER TRACK PAK** – includes 20-inch Hyper Black aluminum wheels, antilock 4-wheel high-performance disc brakes, 3.07 or 3.90 rear axle ratio (based on engine and transmission), rear body-color spoiler, performance steering, performance suspension with Bilstein® shocks, steering wheel-mounted paddle shifters (automatic transmission), ParkView® Rear Back-Up Camera<sup>[16]</sup> and ParkSense® Rear Park Assist<sup>[16]</sup> (SXT, SXT Plus, R/T and R/T Plus)

**SUPER SPORT GROUP SS/T** – includes 20-inch Satin Carbon aluminum wheels, 245/45R20 All-Season Performance tires, antilock 4-wheel performance disc brakes, 3.07 rear axle ratio, decklid spoiler, compact spare tire and steering wheel-mounted paddle shifters (SXT)

**DRIVER CONVENIENCE GROUP** – includes power multifunction foldaway mirrors, High Intensity Discharge (HID) headlamps, Blind Spot Monitoring (BSM)<sup>[17]</sup> and Rear Cross-Path Detection<sup>[16]</sup>, remote start, ParkSense Rear Park Assist<sup>[16]</sup> and Universal Garage Door Opener (SXT, SXT Plus, R/T, R/T Plus and Scat Pack)

**TECHNOLOGY GROUP** – includes rain-sensitive windshield wipers, Auto High-Beam Headlamp Control, Forward Collision Warning (FCW)<sup>[14]</sup> and Adaptive Cruise Control (ACC)<sup>[15]</sup>

**PREMIUM SOUND GROUP** – includes 18 Harman Kardon® premium speakers, Harman Kardon 900-watt amplifier and Tire Service Kit

**SCAT PACK APPEARANCE GROUP** – includes 20x9-inch Matte Black lightweight forged aluminum wheels, Scat Pack Bumblebee tail stripe, HID headlamps, Hectic Mesh interior accents, Performance cloth seats with Scat Pack logo,\* Scat Pack premium floor mats,\* Black grille, leather-wrapped performance steering wheel,\* Black fuel-filler door and Scat Pack gauge cluster splash screen,\* and 506-watt Alpine® Audio System\* with premium speakers with subwoofer

**SOUND GROUP** – includes 6 premium speakers and 276-watt amplifier

**SOUND GROUP II** – includes 9 premium speakers with subwoofer and 506-watt amplifier

\*Late availability.





**BORN // DODGE**

We've been making cars for 100 years. We started with two brothers. They tinkered, experimented and sweated the details. They had energy and conviction that were impossible to ignore. They set the standard for us and for those who come after us. Dodge means doing things for a reason and being proud of the

things we do. We want people to actually use their car for what the car is built to do. We think the car has been commoditized and that America's drivers have been abandoned. We want to bring back America's passion for driving. We will do this one Dodge at a time. This is what it means to be "Born Dodge."

////// Challenger 392 HEMI® Scat Pack Shaker shown in Billet Silver Metallic.



# DODGE



DODGE IS A REGISTERED TRADEMARK OF CHRYSLER GROUP LLC.



5 YEAR/100,000 MILE  
POWERTRAIN LIMITED WARRANTY<sup>[20]</sup>



[1] Based on the latest available competitive information and *Ward's* Middle Specialty Vehicle segmentation. [2] Based on *Ward's* Standard Specialty Segment based on *Car and Driver* ¼-mile time. [3] Based on latest available competitive information and *Ward's* Middle Specialty MSRP under \$50,000. [4] No system, no matter how sophisticated, can repeal the laws of physics or overcome careless driving actions. Performance is limited by available traction, which snow, ice and other conditions can affect. When the ESC warning lamp flashes, the driver needs to use less throttle and adapt speed and driving behavior to prevailing road conditions. Always drive carefully, consistent with conditions. Always wear your seat belt. [5] Based on third-party testing. [6] Requires a mobile phone equipped with the Bluetooth Hands-Free Profile. Visit [UconnectPhone.com](http://UconnectPhone.com) for system and device compatibility. [7] The 9-1-1 Call button will connect you directly with Emergency Assistance. If you accidentally press the button, you have 10 seconds to cancel the call by either pressing the 9-1-1 button on the rearview mirror or the Cancel button on the Uconnect touchscreen. [8] Provides direct-dial access to Roadside Assistance Service. Vehicle must be within the United States, have network coverage and must be registered with Uconnect Access with an active subscription that includes the applicable feature. Additional roadside assistance charges may apply. Check warranty for details. [9] If you have this feature and have reported your vehicle as stolen to an appropriate law enforcement agency, Uconnect will try to locate your vehicle after receiving proper documents and once law enforcement contacts Uconnect Customer Care. Uconnect may refuse to locate your vehicle if you do not provide the requested information or documents. Always notify law enforcement if your vehicle is stolen and do not attempt to recover it on your own. [10] Vehicle must be registered with Uconnect Access and fulfill minimum subscription requirements. Vehicle must also be properly equipped and in an active and usable cellular range. Theft Alarm Notification is only available on factory-installed alarms. [11] Phone must support Bluetooth Phone Book Access Profile (PBAP). [12] WiFi subscription required. This feature is not intended for use by the driver while the vehicle is in motion. Always drive carefully. [13] SiriusXM audio and data services each require a subscription after the trial included with the new vehicle purchase, sold separately or as a package, by SiriusXM Radio Inc. **If you decide to continue service after your trial, the subscription plan you choose will automatically renew thereafter and you will be charged according to your chosen payment method at then-current rates. Fees and taxes apply. To cancel, you must call SiriusXM at 1-866-635-2349. See SiriusXM Customer Agreement for complete terms at [www.siriusxm.com](http://www.siriusxm.com).** All fees and programming subject to change. © 2014 SiriusXM Radio Inc. Sirius, XM and all related marks and logos are trademarks of SiriusXM Radio Inc. [14] FCW system is solely an alert system for the front of the vehicle which does not take any actions to change the vehicle dynamics to avoid a collision and is not a substitute for active driver involvement. The driver must remain aware of traffic conditions and be prepared to use the brakes to avoid collisions. [15] ACC is a driver convenience system, not a substitute for active driver involvement. The driver must remain aware of traffic conditions and be prepared to use the brakes to avoid collisions. [16] Always look before proceeding, electronic drive aid is not a substitute for conscientious driving; always be aware of your surroundings. [17] Always check visually for vehicles prior to changing lanes. [18] The Advanced Front Air Bags in this vehicle are certified to the new U.S. federal regulations for advanced air bags. Children 12 years old and younger should always ride buckled up in a rear seat. Infants in rear-facing child restraints should never ride in the front seat of a vehicle with a passenger front air bag. All occupants should always wear their lap and shoulder belts properly. [19] Uconnect Access Via Mobile uses your smartphone's existing data plan to access information online. To use Via Mobile, you must have a compatible smartphone (with the Uconnect Access app installed and launched, visit [UconnectPhone.com](http://UconnectPhone.com) for compatibility) and you must fulfill all Uconnect Access registration and subscription requirements. Some applications must be configured on Mopar Owner Connect and may require an account. Via Mobile is included for five years and begins the day you take delivery of your vehicle. Register as soon as possible. Must be within the 48 contiguous United States, plus Alaska, and within active and usable cellular range. [20] Transferable. See dealer for complete details and a copy of the 5-Year/100,000-Mile Powertrain Limited Warranty. **About this catalog:** Since the time of printing, some of the information you'll find in this catalog may have been updated. Ask your dealer for details. Some of the equipment shown or described throughout this catalog may be available at extra cost. Specifications, descriptions, illustrative materials and all competitive comparisons contained herein are as accurate as known at the time this publication was approved for printing. Chrysler Group LLC reserves the right to discontinue models at any time or change specifications without notice or without incurring obligation. Some options may be required in combination with other options. For the price of the model with the equipment you desire, or verification of specifications contained here, see your Dodge dealer. All rights reserved. Dodge, Challenger, Blacktop, HEMI, Mopar, Mopar Owner Connect, ParkSense, ParkView, Pentastar, R/T, SRT, SXT, TorqueFlite, Uconnect and Viper are registered trademarks, and Air Catcher, Keyless Enter 'n Go and Mopar Vehicle Protection are trademarks of Chrysler Group LLC. Sirius, XM and all related marks and logos are trademarks of SiriusXM Radio Inc. and its subsidiaries. Alcantara is a registered trademark of Alcantara S.p.A. Alpine and the Alpine logo are registered trademarks of Alpine Electronics, Inc. Aurasma and the App are protected by copyright, trademark and other laws of the United States, United Kingdom and other jurisdictions. Bluetooth is a registered trademark of Bluetooth SIG, Inc. Brembo is a registered trademark of Freni Brembo S.p.A. Bilstein is a registered trademark of August-Bilstein GmbH & Co. Goodyear is a registered trademark of The Goodyear Tire & Rubber Company. All rights reserved. iTunes is a registered trademark of Apple Inc. All rights reserved. Pirelli is a registered trademark of Pirelli Tyre S.p.A. TREMEC is a registered trademark of Transmisiones Y Equipos Mecánicos, S.A. de C.V. Harman Kardon and logo are registered trademarks of Harman International Industries, Inc. Facebook and logo are registered trademarks of Facebook, Inc. The Twitter logo is a service mark of Twitter, Inc. The YouTube logo is a trademark of Google, Inc. Yelp is a registered trademark of Yelp. © 2014 Chrysler Group LLC.

DODGE CHALLENGER // // // // DODGE.COM // // // // 800-4ADODGE