

# 14 MUSTANG



**SPECIFICATIONS**



**Go Further**

# READY, SET, GONE

## WITNESS THE BURN



Scan this photo now for the enhanced Mustang experience!

**STEP 1** Download the free Digimarc® Discover app onto your mobile device.

OR text DISCOVER to 4FORD (43673) for a link.

Message and data rates may apply. By texting, you agree to receive a per text reply text message, including a text message confirming your cancellation if you reply STOP. Text HELP for help.



**STEP 2** Using the app, hold your device 6" away from this photo (and look for other pages marked with the icon).



## SPECIFICATIONS

### STANDARD FEATURES

#### Mechanical

4-wheel disc Anti-Lock Brake System (ABS)  
All-speed traction control  
Coil-over-strut front suspension  
Coil spring 3-link solid-axle rear suspension  
Front and rear stabilizer bars  
Selectable-effort electric power-assisted steering (Standard, Comfort, Sport)

#### Seating

Front bucket seats  
50/50 split-fold rear seat (coupe only)

#### Interior

12-volt powerpoints (2)  
Auxiliary audio input jack  
Carpeted front floor mats in Charcoal Black  
Cruise control  
Full center floor console with armrest and locking storage  
Power door locks  
Power windows with one-touch-up/-down feature  
Sun visors with multipurpose storage system and illuminated vanity mirrors  
Tilt steering column

#### Exterior

Easy Fuel® capless fuel filler  
High-intensity discharge (HID) headlamps  
Rear sequential light-emitting diode (LED) turn signal lamps  
Rear-window defroster  
Sideview mirrors with integrated blind spot mirrors  
Windshield wipers – Variable-intermittent

#### Safety & Security

Personal Safety System™ with dual-stage front airbags¹  
AdvanceTrac® electronic stability control  
Belt-Minder® front safety belt reminder  
Front-seat side airbags¹  
Illuminated Entry System  
LATCH – Lower Anchors and Tether Anchors for Children  
MyKey®  
Remote Keyless Entry System with integrated keyhead transmitter remotes (2)  
Safety belt restraint system – Manual 3-point shoulder and lap safety belt system for all seating positions  
SecuriLock® Passive Anti-Theft System  
SOS Post-Crash Alert System™  
Tire Pressure Monitoring System (excludes spare)

### ENGINES/EPA-ESTIMATED RATINGS & DIMENSIONS

#### 3.7L Ti-VCT V6

305 hp @ 6,500 rpm  
280 lb.-ft. of torque @ 4,250 rpm  
6-speed transmission  
Manual 19 city/29 hwy/22 combined mpg  
Automatic 19 city/31 hwy/23 combined mpg  
(31 mpg hwy for automatic coupe only; 30 mpg hwy for automatic convertible)

#### 5.0L Ti-VCT V8

420 hp @ 6,500 rpm²  
390 lb.-ft. of torque @ 4,250 rpm²  
6-speed transmission  
Manual 15 city/26 hwy/19 combined mpg  
Automatic 18 city/25 hwy/20 combined mpg

#### 5.8L DOHC Supercharged V8

662 hp @ 6,500 rpm³  
631 lb.-ft. of torque @ 4,000 rpm³  
6-speed transmission  
Manual 15 city/24 hwy/18 combined mpg

Exterior⁴	Coupe/Convertible
Wheelbase	107.1"
Length	188.1"
Height	55.8"
Width – Excluding mirrors	73.9"
Width – Including mirrors	80.1"

Front Interior⁴	Coupe/Convertible
Head room	38.5"/38.8"
Shoulder room	55.3"
Leg room	42.4"

Rear Interior⁴	Coupe/Convertible
Head room	34.7"/36.5"
Shoulder room	51.6"/45.0"
Leg room	29.8"

Capacities⁴ (cu. ft.)	Coupe/Convertible
Passenger volume	83.3/81.0
Luggage capacity	13.4/9.6
Total interior volume	96.7/90.6
Fuel capacity (gal.)	16.0

¹Always wear your safety belt and secure children in the rear seat. ²Figures achieved using premium unleaded fuel. ³Figures achieved using premium unleaded 93-octane fuel. ⁴Dimensions and capacities based on V6 and GT models. For Shelby GT500 dimensions, see your dealer.

14MUSTANG  
ford.com





## V6

### Equipment Group 100A

*Includes all standard features, plus:*

#### Mechanical

3.7L Ti-VCT V6 engine

6-speed manual transmission

2.73:1 gear ratio with limited-slip rear differential

Compact spare

#### Seating

4-way manually adjustable driver's seat with height adjustment

2-way manually adjustable front-passenger seat

#### Interior

4-gauge instrument cluster with chrome accents

Leather-wrapped steering wheel

Message center

Premium AM/FM stereo/single-CD audio system

Single-zone manual air conditioning

Steering wheel-mounted cruise control

#### Exterior

17" Sparkle Silver-painted aluminum wheels with P225/60R17 all-season tires

Black power sideview mirrors

Stainless steel dual exhaust tips

Vinyl top on convertible

#### Available Equipment Group

**Equipment Group 102A – Tech Package** includes Ford SYNC® voice-activated, in-vehicle connectivity system; steering wheel-mounted audio controls; 6-way power driver's seat; auto-dimming rearview mirror; and LED fog lamps

#### Available Options & Packages

3.31:1 gear ratio with limited-slip rear differential (coupe only)

6-speed SelectShift® automatic transmission

All-weather floor mats

**FP6 Appearance Package** includes black-painted sideview mirrors and rear spoiler, body-color quarter window louvers and 18" Black-painted aluminum wheels (coupe only, n/a with V6 Performance Package)

RECARO® Sport cloth seats with manual adjustment (coupe only)

#### Reverse Sensing System & Security Package

Includes Reverse Sensing System, Active Anti-Theft System and wheel locks

**V6 Performance Package** includes larger diameter front and rear stabilizer bars, tuned front spring rates, unique front and rear calipers with Performance Friction brake pads (manual transmission), 3.31:1 gear ratio with limited-slip rear differential, unique electronic stability control tuning, strut-tower brace, gloss-black sideview mirrors, 19" Foundry Black-painted machined aluminum wheels and 255/40R19 summer-only tires (coupe only; n/a with white stripes)

## V6 PREMIUM

### Equipment Group 200A

*Includes select V6 features, plus:*

#### Seating

6-way power driver's seat with power lumbar

Leather-trimmed front seats

#### Interior

4.2" color LCD display in instrument cluster with MyColor® illumination and Track Apps™

Ambient lighting

Auto-dimming rearview mirror

Bright-aluminum instrument panel, pedal covers, door-sill scuff plates and shift knob

Bright-chrome door speaker surrounds

Ford SYNC voice-activated, in-vehicle connectivity system including SYNC AppLink™ and SYNC Services for Traffic, Directions and Information

Shaker™ Audio System with AM/FM stereo/single-CD player with MP3 capability and 6 speakers

SiriusXM Satellite Radio with 6-month trial subscription

Steering wheel-mounted cruise, audio and 5-way message center controls

Universal garage door opener

Vinyl door-trim panel inserts

#### Exterior

17" machined aluminum wheels with painted pockets

Body-color power sideview mirrors

### Available Equipment Groups

#### Equipment Group 201A – Exterior Appearance Package

Includes lower bodyside tape stripes and rear spoiler

#### Equipment Group 202A – V6 Pony Package

Includes 18" polished aluminum wheels with P235/50R18 W-rated tires, unique Pony grille, fog lamps, automatic headlamps, carpeted front floor mats with embroidered Pony logo, lower bodyside tape stripes, and rear decklid spoiler

#### Equipment Group 203A – Mustang Club of America Edition

Includes dark stainless-painted billet-style grille, lower fascia-mounted fog lamps, unique bodyside tape stripes, 18" Sterling Gray Metallic-painted aluminum wheels with P235/50R18 W-rated tires, premium carpeted floor mats with embroidered Mustang Club of America logo, automatic headlamps, and rear decklid spoiler

### Available Options & Packages

3.31:1 gear ratio with limited-slip rear differential (coupe only)

6-speed SelectShift automatic transmission

All-weather floor mats

**Comfort Package** includes 6-way power front-passenger seat, and heated front seats and sideview mirrors with Pony projection lamps (n/a with RECARO seats)

**Electronics Package** includes dual-zone electronic automatic temperature control; HD Radio™; and hard drive-based, voice-activated Navigation System with integrated SiriusXM Traffic and Travel Link with 6-month trial subscription

Hood and side stripes (n/a with 202A and 203A)

Glass roof (coupe only)

Over-the-top stripe (n/a with 202A and 203A)

Rear view camera (n/a with 200A)

RECARO Sport leather-trimmed front seats with manual adjustment (coupe only; n/a with 202A)

Remote start systems (automatic only)

#### Reverse Sensing System & Security Package

Soft boot for convertible top

Tape stripe delete (n/a with 200A or 203A)

**V6 Coupe Package 1** includes side scoops and quarter window louvers (n/a with 203A)

**V6 Convertible Package 2** includes side scoops (n/a with 203A)

**V6 Performance Package** (n/a with 202A)

## SPECIFICATIONS



V6. Gotta Have It Green Metallic Tri-coat. FP6 Appearance Package.

V6 Premium. Black. V6 Pony Package. Available equipment.

V6 Premium interior. Charcoal Black.

V6 Pony Package grille detail.

GT

Equipment Group 300A
<i>Includes all standard features, plus:</i>
<b>Mechanical</b>
5.0L Ti-VCT V8 engine
6-speed manual transmission
3.31:1 gear ratio with limited-slip rear differential
Compact spare tire
<b>Seating</b>
4-way manually adjustable driver's seat with height adjustment
2-way manually adjustable front-passenger seat
<b>Interior</b>
4-gauge instrument cluster with chrome accents
Leather-wrapped steering wheel
Message center
Premium AM/FM stereo/single-CD audio system
Single-zone manual air conditioning
Steering wheel-mounted cruise control
<b>Exterior</b>
18" Sparkle Silver-painted aluminum wheels with P235/50R18 W-rated tires
Automatic headlamps
Body-color power sideview mirrors
Bright rolled dual exhaust tips
Dark-chrome Pony badge located in grille
Hood-vented heat extractors
LED fog lamps
Rear spoiler
Vinyl top on convertible
<b>Available Equipment Group</b>
<b>Equipment Group 301A – Tech Package</b> includes Ford SYNC® voice-activated, in-vehicle connectivity system; steering wheel-mounted audio controls; 6-way power driver's seat; and auto-dimming rearview mirror
<b>Available Options &amp; Packages</b>
3.55:1 gear ratio with limited-slip rear differential (manual coupe only)
3.73:1 gear ratio with limited-slip rear differential (manual coupe only)
6-speed SelectShift® automatic transmission
All-weather floor mats
<b>Brembo™ Brake Package</b> includes Brembo 14" vented front rotors with Brembo 4-piston calipers, unique electronic stability control suspension tuning, and 19" dark stainless-painted aluminum wheels with 255/40R19 summer-only performance tires (manual transmission only)
<b>FPB Appearance Package</b> includes black-painted sideview mirrors and rear spoiler, body-color quarter window louvers and 19" machined aluminum wheels with black-painted windows (coupe only, n/a with GT Track Package, Brembo Brake Package, or spoiler delete)
<b>GT Track Package</b> includes all content of <b>Brembo Brake Package</b> plus 3.73:1 gear ratio with TORSEN® helical gear differential, BOSS® 302 radiator, and engine oil cooler (manual coupe only)
RECARO® Sport cloth seats with manual adjustment (coupe only)
<b>Reverse Sensing System &amp; Security Package</b> includes Reverse Sensing System, Active Anti-Theft System and wheel locks
Spoiler delete (n/a with 301A)

GT PREMIUM

Equipment Group 400A
<i>Includes select GT features, plus:</i>
<b>Seating</b>
6-way power driver's seat with power lumbar
Leather-trimmed front seats
<b>Interior</b>
4.2" color LCD display in instrument cluster with MyColor® illumination and Track Apps™
Ambient lighting
Auto-dimming rearview mirror
Bright-aluminum instrument panel, pedal covers, door-sill scuff plates and shift knob
Bright-chrome door speaker surrounds
Ford SYNC voice-activated, in-vehicle connectivity system including SYNC AppLink and SYNC Services for Traffic, Directions and Information
Shaker™ Audio System with AM/FM stereo/single-CD player with MP3 capability and 6 speakers
SiriusXM Satellite Radio with 6-month trial subscription
Steering wheel-mounted cruise, audio and 5-way message center controls
Universal garage door opener
Vinyl door-trim panel inserts
<b>Exterior</b>
Cloth top on convertible
Soft boot for convertible top
<b>Available Equipment Groups</b>
<b>Equipment Group 401A – Premier Trim With Color Accent Package</b> includes Charcoal Black interior environment with color-accented seats, unique door trim with bright Pony badge, aluminum shift knob and dark-aluminum instrument panel (n/a with exterior stripes)
<b>Equipment Group 402A – California Special Edition</b> includes unique black billet-style grille, unique lower fascia with fog lamps and air splitter, 19" black-painted machined aluminum wheels with P245/45R19 tires, GT/CS side and hood stripes, black hood vents, unique decklid badge with name in gas cap badge, unique instrument panel finish and door-panel inserts, leather-trimmed front bucket seats with Miko® Suede inserts, premium carpeted front floor mats with embroidered logo, rear diffuser-style lower fascia, pedestal rear spoiler, and side scoops

<b>Available Options &amp; Packages</b>
3.55:1 gear ratio with limited-slip rear differential (manual coupe)
3.73:1 gear ratio with limited-slip rear differential (manual coupe)
6-speed SelectShift automatic transmission
18" polished aluminum wheels (n/a with 402A)
19" machined aluminum wheels with black-painted windows (n/a with 402A)
19" premium Luster Nickel-painted aluminum wheels (n/a with 402A)
All-weather floor mats
<b>Brembo Brake Package</b> (n/a with 402A)
<b>Comfort Package</b> includes 6-way power front-passenger seat, and heated front seats and sideview mirrors with Pony projection lamps (n/a with RECARO seats)
<b>Electronics Package</b> includes dual-zone electronic automatic temperature control; HD Radio™; and hard drive-based, voice-activated Navigation System with integrated SiriusXM Traffic and Travel Link with 6-month trial subscription
Glass roof (coupe only)
GT California Special car cover (402A only)
<b>GT Coupe Package 1</b> includes side scoops and quarter window louvers (n/a with 402A)
<b>GT Convertible Package 2</b> includes side scoops (n/a with 402A)
<b>GT Package 4</b> includes rear pedestal-mount spoiler (requires spoiler delete; n/a with 402A or rear view camera)
<b>GT Coupe Package 5</b> includes rear pedestal-mount spoiler, side scoops and quarter window louvers (requires spoiler delete; n/a with 402A, rear view camera or GT Coupe Package 1)
<b>GT Convertible Package 6</b> includes rear pedestal-mount spoiler and side scoops (requires spoiler delete; n/a with 402A, rear view camera or GT Convertible Package 2)
<b>GT Track Package</b> (n/a with 402A)
Hood and side stripes (400A only; late availability)
Over-the-top stripe (400A only)
Rear view camera (n/a with 402A)
RECARO Sport leather-trimmed front seats with manual adjustment (coupe only; n/a with 401A or 402A)
Remote start systems (automatic only)
<b>Reverse Sensing System &amp; Security Package</b> (n/a with 402A)
Shaker Pro Audio System with AM/FM stereo/single-CD player with MP3 capability, and 7 speakers including a subwoofer
Spoiler delete (n/a with 402A)

SPECIFICATIONS



GT. Sterling Gray Metallic. GT Track Package.  
GT Premium. Race Red. Brembo Brake Package. Available equipment.  
420-hp 5.0L V8 engine.  
Brembo Brake Package.



SHELBY® GT500®

Equipment Group 820A  
Includes select GT Premium features, plus:

**Mechanical**  
5.8L DOHC supercharged V8 engine  
6-speed manual transmission  
15.0 psi boost  
3.31:1 gear ratio with limited-slip rear differential  
Brembo™ 15" vented front rotors with 6-piston calipers  
Forged-steel crankshaft  
SVT-tuned suspension with unique shocks and springs  
Tuned stainless steel H-pipe exhaust with 3.5" tips

**Seating**  
Leather-trimmed front sport seats with racing stripes and Alcantara® trim  
Heated front seats

**Interior**  
Base Shaker™ Audio System with 6 speakers  
Leather-wrapped steering wheel with Alcantara trim  
Unique instrument cluster

**Exterior**  
19" x 9.5" front and 20" x 9.5" rear premium painted forged-aluminum wheels with Goodyear® Eagle® F1 Supercar G:2 tires  
Convertible soft boot  
HID headlamps with autolamp  
Le Mans racing stripes  
Power dome hood with heat extractor  
Shelby GT500 badging  
Shelby GT500 side rocker stripes  
Unique rear spoiler  
Wheel lock kit

**Available Equipment Group**  
**Equipment Group 821A – SVT Performance Package** includes 3.31:1 gear ratio TORSEN® helical gear differential; 19" x 9.5" Tarnish-painted forged-aluminum front wheels with P265/40R19 tires; 20" x 9.5" Tarnish-painted forged-aluminum rear wheels with P285/35R20 tires; unique rear springs; unique rear shocks; unique shift knob; SVT-engineered Bilstein™ cockpit adjustable dampers; and unique instrument cluster

**Available Options & Packages**  
**Electronics Package** includes dual-zone electronic automatic temperature control; HD Radio™; and hard drive-based, voice-activated Navigation System with integrated SiriusXM Traffic and Travel Link with 6-month trial subscription  
Glass roof (coupe only)  
RECARO® Sport leather-trimmed front seats with manual adjustment (n/a with heated front seats)  
Shaker™ Pro Audio System with AM/FM stereo/single-CD player with MP3 capability, and 7 speakers including a subwoofer  
Shelby GT500 car cover  
**SVT Track Pack** includes external engine oil cooler, transmission cooler with integral pump and differential cooler (coupe only; requires 821A)  
Tape stripe delete



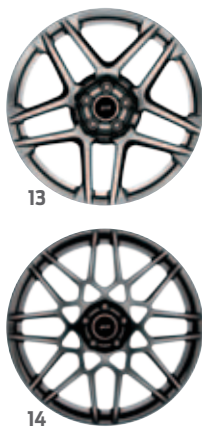
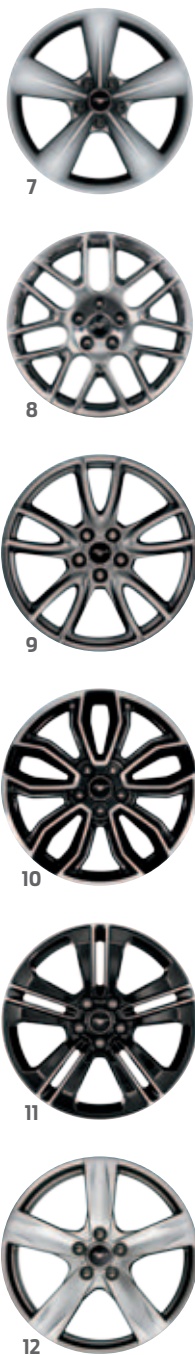
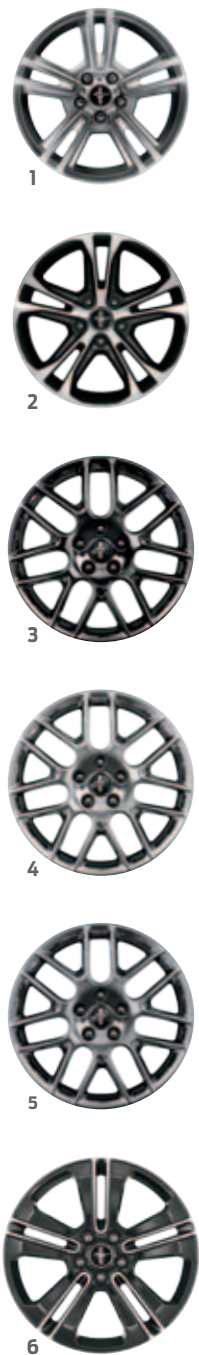
Shelby GT500. Deep Impact Blue Metallic. SVT Performance Package. Available equipment.  
662-hp 5.8L supercharged V8 engine.  
Shelby GT500 interior. Charcoal Black with Red racing stripes.

SPECIFICATIONS

V6/V6 PREMIUM

GT/GT PREMIUM

SHELBY GT500



- 1 17" Sparkle Silver-Painted Aluminum Standard: **V6**
- 2 17" Machined Aluminum with Painted Pockets Standard: **V6 Premium**
- 3 18" Black-Painted Aluminum Included: **FP6 Appearance Package**
- 4 18" Polished Aluminum<sup>1</sup> Included: **V6 Premium** Pony Package
- 5 18" Sterling Gray Metallic-Painted Aluminum<sup>1</sup> Included: **V6 Premium** Mustang Club of America Edition
- 6 19" Foundry Black-Painted Machined Aluminum<sup>1</sup> Included: **V6** and **V6 Premium** Performance Packages
- 7 18" Sparkle Silver-Painted Aluminum Standard: **GT** and **GT Premium**
- 8 18" Polished Aluminum<sup>1</sup> Optional: **GT Premium**
- 9 19" Dark Stainless-Painted Aluminum Included: **GT** and **GT Premium** Brembo Brake and Track Packages
- 10 19" Machined Aluminum with Black-Painted Windows Included: **FP8 Appearance Package** Optional: **GT Premium**
- 11 19" Black-Painted Machined Aluminum<sup>1</sup> Included: **GT Premium** California Special Edition
- 12 19" Premium Luster Nickel-Painted Aluminum Optional: **GT Premium**
- 13 19" x 9.5" Front/20" x 9.5" Rear Premium Painted Forged-Aluminum Standard: **Shelby GT500**
- 14 19" x 9.5" Front/20" x 9.5" Rear Tarnish-Painted Forged-Aluminum Included: **Shelby GT500** SVT Performance Package

<sup>1</sup>Additional finish options available from Ford Custom Accessories.



Scan any Mustang to bring all of your favorite colors to life.

## EXTERIORS



Oxford White



Ingot Silver Metallic



Sterling Gray Metallic



Gotta Have It Green Metallic Tri-coat



Race Red



Ruby Red Metallic Tinted Clearcoat



Grabber Blue

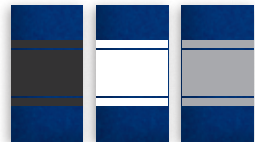


Deep Impact Blue Metallic



Black

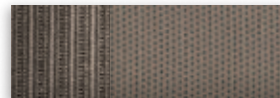
## V6/V6 PREMIUM GT/GT PREMIUM



## SHELBY® GT500®



## INTERIORS



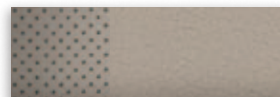
1 Stone Cloth



2 Charcoal Black Cloth



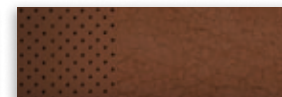
3 Charcoal Black RECARO® Sport Cloth



4 Stone Leather



5 Charcoal Black Leather



6 Saddle Leather



7 Charcoal Black RECARO Sport Leather



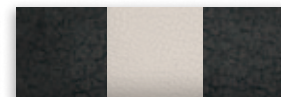
8 Charcoal Black Leather with Miko® Suede Inserts



9 Brick Red Leather with Cashmere-Colored Racing Stripe



10 Charcoal Black Leather with Grabber Blue Racing Stripe



11 Charcoal Black Leather with Cashmere-Colored Racing Stripe



12 Charcoal Black Leather with White Racing Stripes



13 Charcoal Black Leather with Red Racing Stripes



14 Charcoal Black Leather with Deep Impact Blue Racing Stripes



15 Charcoal Black Leather with Black Racing Stripes

Exteriors	Interiors															Convertible Top <sup>2</sup>					
	V6/GT			V6 Premium			GT Premium					Shelby GT500 <sup>1</sup>				Stone	Black				
Oxford White	1	2	3	4	5	6	7	4	5	6	7	8	9	10	11	13	14	15	●	●	
Ingot Silver Metallic	1	2	3	4	5	6	7	4	5	6	7	8	9	10	11	13	14	15		●	
Sterling Gray Metallic	1	2	3	4	5	6	7	4	5	6	7	8	9		11	12	13	14	15	●	
Gotta Have It Green Metallic Tri-coat <sup>3</sup>		2	3		5		7		5		7				11					●	
Race Red	1	2	3	4	5	6	7	4	5	6	7	8	9		11	12		14	15	●	●
Ruby Red Metallic Tinted Clearcoat <sup>3</sup>	1	2	3	4	5	6	7	4	5	6	7				11	12		15		●	●
Grabber Blue		2	3		5		7		5		7		10	11		12		15			●
Deep Impact Blue Metallic	1	2	3	4	5	6	7	4	5	6	7	8	9	10	11	12	13	15		●	●
Black <sup>4</sup>	1	2	3	4	5	6	7	4	5	6	7	8	9	10	11	12	13	15		●	●

<sup>1</sup>Shelby GT500 seats available in leather-trimmed sport bucket or RECARO sport seats.

<sup>2</sup>Black cloth convertible top is standard on GT Premium and Shelby GT500.

<sup>3</sup>Additional charge. <sup>4</sup>Not available with Mustang Club of America Package.

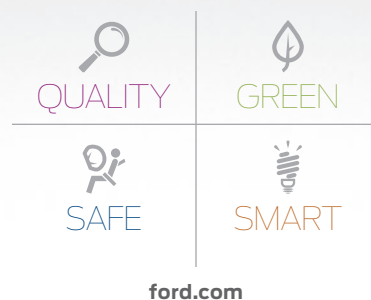
Colors are representative only. See your dealer for actual paint/trim options.

14MUSTANG  
ford.com



Go Further





**New Vehicle Limited Warranty.** We want your Ford Mustang ownership experience to be the best it can be. Under this warranty, your new vehicle comes with 3-year/36,000-mile bumper-to-bumper coverage, 5-year/60,000-mile Powertrain Warranty coverage, 5-year/60,000-mile safety restraint coverage, and 5-year/unlimited-mile corrosion (perforation) coverage – all with no deductible. Please ask your Ford Dealer for a copy of this limited warranty. **Roadside Assistance.** Covers your vehicle for 5 years or 60,000 miles, so you have the security of knowing that help may be only a phone call away should you run out of fuel, lock yourself out of the vehicle or need towing. Your Ford Dealer can provide complete details on all of these advantages. **Ford Credit.** Get the ride you want. Whether you plan to lease or finance, you'll find the choices that are right for you at Ford Credit. Ask your Ford Dealer for details or check us out at [fordcredit.com](http://fordcredit.com). **Ford Extended Service Plan.** For a purchase or lease, the Ford Extended Service Plan (ESP) gives you "Peace-of-Mind" protection designed to cover key vehicle components and protect you from the cost of unexpected repairs. Ask your dealer for a Ford ESP, the only service contract backed exclusively by Ford and honored at all Ford Lincoln dealerships. **Insurance Services.** Get Ford Motor Company quality in your auto insurance. Our program offers industry-leading benefits and competitive rates. Call 1-877-367-3847, or visit us at [fordvip.com](http://fordvip.com) for a no-obligation quote. Insurance offered by American Road Services Company (in CA, American Road Insurance Agency), a licensed agency and subsidiary of Ford Motor Company. **Genuine Ford Accessories** will be warranted for whichever provides you the greatest benefit: 12 months or 12,000 miles (whichever occurs first), or the remainder of your Bumper-to-Bumper 3-year/36,000-mile New Vehicle Limited Warranty. Ford Licensed Accessories (FLA) are warranted by the accessory manufacturer's warranty. FLA are fully designed and developed by the accessory manufacturer and have not been designed or tested to Ford Motor Company engineering requirements. Contact your Ford Dealer for details and/or a copy of all limited warranties.



**Build your dream car and race against friends.**

Get the Mustang Customizer mobile app and test your skills on 9 different courses. Beat the best times set by your friends!

Comparisons based on 2013 competitive models (class is 300+ HP Sports Cars), publicly available information and Ford certification data at time of release. Some features discussed may be optional. Vehicles shown may contain optional equipment. Features shown may be offered only in combination with other options or subject to additional ordering requirements or limitations. Dimensions shown may vary due to optional features and/or production variability. Following release of the PDF, certain changes in standard equipment, options and the like, or product delays may have occurred which would not be included in these pages. Your Ford Dealer is the best source for up-to-date information. Ford Division reserves the right to change product specifications at any time without incurring obligations. **Alcantara** is a registered trademark of Alcantara S.p.A., Italy. **Bilstein** is a trademark of Thyssen-Krupp Bilstein Suspension GmbH. **Brembo** is a trademark of Brembo S.p.A. **Goodyear** is a registered trademark of The Goodyear Tire & Rubber Company. **HD Radio** is a proprietary trademark of iBiquity Digital Corp. **Miko** is a registered trademark of Miko s.r.l. **RECARO** is a registered trademark of RECARO Beteiligungs-GmbH. **Shelby** and **GT500** are registered trademarks of Carroll Hall Shelby Trust. **SiriusXM Satellite Radio**, **Traffic** and **Travel Link** subscriptions sold separately or as a package after trial expires. **SiriusXM Traffic** and **Travel Link** service available in select markets. See SiriusXM Customer Agreement for complete terms at [www.siriusxm.com](http://www.siriusxm.com). **Sirius satellite** service available in the 48 contiguous United States, DC, and PR. **Sirius, XM** and all related marks and logos are trademarks of Sirius XM Radio Inc. **TORSEN** is a registered trademark of JTEKT Corporation.

Follow Ford:



[facebook.com/fordmustang](https://facebook.com/fordmustang)



[twitter.com/FordMustang](https://twitter.com/FordMustang)



[youtube.com/fordmustang](https://youtube.com/fordmustang)



[gplus.to/FordMotorCompany](https://gplus.to/FordMotorCompany)