



REGAL | [buick.ca](http://buick.ca)

THE NEW CLASS OF WORLD CLASS

191-11-B-001E



ALL-NEW 2011 REGAL



ALL-NEW 2011 | BUICK REGAL |  
THE NEW CLASS OF WORLD CLASS



ITS REPUTATION PRECEDES IT.

BUT THIS EUROPEAN BESTSELLER AND AWARD WINNER STILL HAS SOMETHING LEFT TO PROVE.

2011 BUICK REGAL //



Driving enthusiasts typically associate elite sport sedans with European engineering. So which sport sedan earned European Car of the Year honours in 2009 and has established itself as the best-selling mid-size car in Europe? This car has already won 39 awards in 15 European countries. And now it is making its eagerly anticipated North American debut as the all-new 2011 Buick Regal. It takes the successful foundation of its European sibling, the Opel Insignia, and adapts it for North American roads and driver preferences. Regal also builds on the momentum generated by the recent award-winning launches of the Buick Enclave and LaCrosse. Now Regal is prepared to shake up some outdated notions, not only of the sport sedan, but also of Buick. All-new. All-world. Introducing the 2011 Buick Regal.

*"WOW! That pretty much sums up the 2011 Regal. It has undeniable style, a top-notch interior, a refined ride and a rewarding turn of speed. It all culminates in a decidedly European driving experience."*

*— Graeme Fletcher, Canwest News Service*



THE FORM IS SLEEK. THE STANCE IS CONFIDENT. AND THE QUALITY IS ABOVE REPROACH.

The all-new Regal does an exemplary job of slicing through the air. That is thanks to its fluid, aerodynamic shape that was refined over more than 650 hours in the wind tunnel. But there is much more to Regal's presence than its wind-cheating abilities. The lines are strong, and the contours sculpted. And the design's clear sense of purpose is echoed by equally rigorous craftsmanship. It can be seen in the remarkably tight and consistent connection between interior trim panels and exterior body panels. That is the product of an exhaustive ongoing quality analysis that includes more than 1000 critical locations and processes. You would never expect anything less from an automotive brand that bills itself as the New Class of World Class.

*"It's a terrific-looking car: modern, characterful, sporty,  
with great stance and artfully sculpted sheetmetal."*

*— Motor Trend*

aerodynamics





IT'S ALL A QUESTION OF BALANCE. AND REGAL SERVES UP SOME UNEQUIVOCAL ANSWERS.

The matrix of factors that defines performance are more complex than ever before. Today, power must be complemented by fuel efficiency. To keep you ahead of the curve, Regal employs the latest in engine technology. Regal CXL is powered by a 2.4L ECOTEC engine that features Direct Injection and Variable Valve Timing (VVT) to produce an enviable balance of torque and horsepower. Output is 182 horsepower, while the highway fuel consumption rating is an impressive 6.5 L/100 km.\* The six-speed automatic transmission heightens the sense of engagement with Driver Shift Control that enables you to tap up or down – shifting gears like a manual. The status quo is no longer enough. Now you can take your driving in a new direction, thanks to the all-new Regal.

\* Based on GM testing in accordance with approved Transport Canada test methods. Your actual fuel consumption may vary.

Regal CXL, shown in Quicksilver Metallic.

Power meets efficiency. //

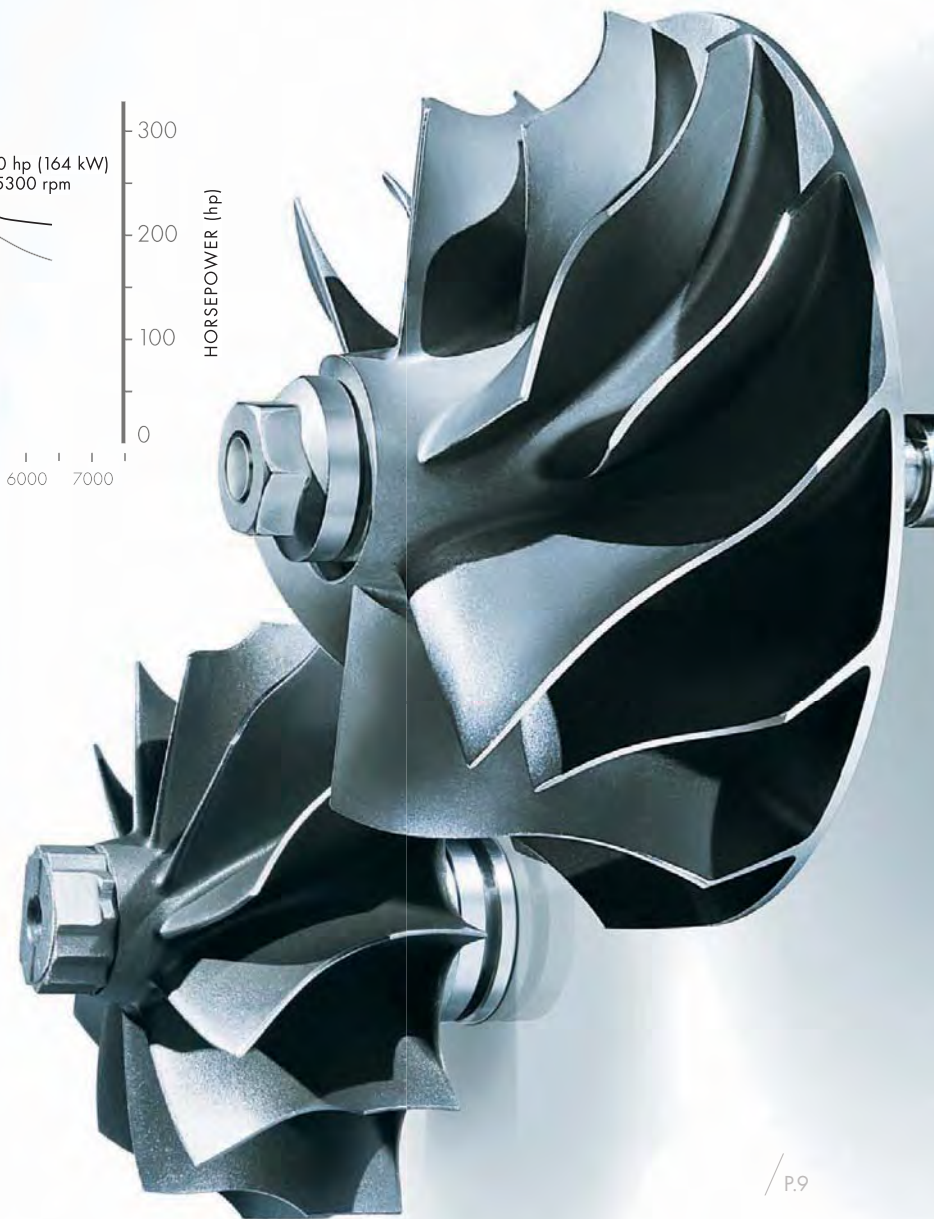
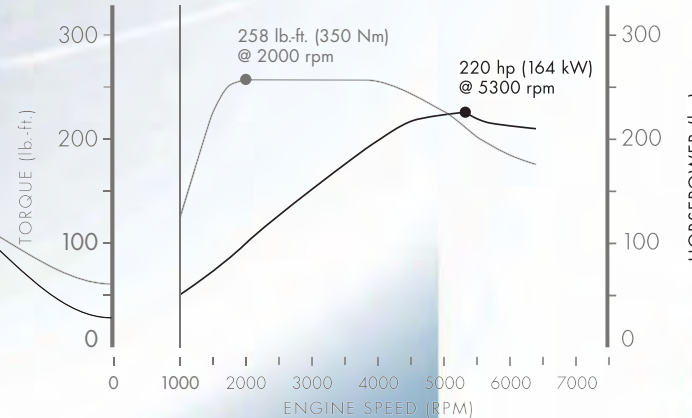




You have the power – and you have the control of how that power is applied, with Regal's advanced, electronically controlled 6-speed automatic transmission. It features Driver Shift Control that provides a clutchless gear selector, that allows you to tap up or down into your preferred gear. For even greater driver input, a 6-speed manual will be available to order in early 2011.



That's cool. The intercooler reduces the temperature of the air feeding into the cylinders by almost 100 degrees Celsius. This enhances performance because the denser, cooler air optimizes combustion. The result? V6 performance with 4-cylinder fuel efficiency. The latest in technology used to deliver the finest in sport sedan performance.



**CREATES INSTANT GRATIFICATION. BUT THIS FORM OF EXHILARATION IS SURE TO LAST.**

The word "turbo" is synonymous with performance in Europe. But it's no longer a foreign word here in Canada, thanks to the Regal CXL Turbo that is making its debut in late 2010. The stats on this turbo are formidable. The 2.0L ECOTEC turbocharged and intercooled engine generates 220 horsepower and 258 lb.-ft. of torque. Its dual-scroll turbo technology represents a marvel of engineering, with dual exhaust passages that funnel gases into turbine impellers that rotate up to 162,000 times per minute. The result is up to 1.4 bar (20 psi) of boost that helps generate peak torque at just 2000 rpm, translating into phenomenal, instantaneous acceleration. And the fuel efficiency is a revelation for a car with these performance credentials. But this technology is not engineered to be admired for its physics – it's designed to produce a much more visceral sensation every time you accelerate: exhilaration.



Regal CXL Turbo, shown in Quicksilver Metallic.



VARIABLE-EFFORT STEERING. It's all about feel. This system, standard on CXL Turbo, automatically reduces hydraulic assistance at higher speeds to help increase your steering feel. At city speeds, more assist is provided for easier manoeuvrability.

FOUR-LINK INDEPENDENT REAR SUSPENSION. Regal's stable ride is partly the product of its advanced rear suspension geometry. The rear configuration specifically contributes to exceptional ride tracking characteristics, even on rough surfaces, while enhancing driveability. The use of aluminum for the lower link reduces weight.



MacPHERSON STRUT FRONT SUSPENSION. The standard MacPherson struts work with other chassis and suspension components to optimize both body and wheel control, while also contributing to Regal's European-tuned ride characteristics and stable braking. The use of aluminum helps to reduce unsprung weight, increasing fuel efficiency and responsiveness.

STABILITRAK AND FULL-FUNCTION TRACTION CONTROL. These systems, in conjunction with 4-wheel ABS, help maintain optimal traction and steering control over a wide range of driving conditions, including under hard braking and on most slippery surfaces.

**"PRECISION HANDLING" ISN'T A CATCHPHRASE – IT IS AN ENGINEERING IMPERATIVE.**

The objective is simple: to produce a level of control and response to driver input that is nothing short of extraordinary. The engineering needed to achieve that goal is anything but simple. It requires a wide stance and a long wheelbase in combination with the meticulous integration of numerous distinct components and systems. They include everything from the chassis and suspension to the braking, StabiliTrak® electronic stability control system and full-function traction control. All these features together define the way Regal feels and handles. Its precision handling and control aren't just a set of words, they are an experience that requires a turn behind the wheel. Tested on the supremely demanding Nürburgring race track, it is now set to take on the specific challenges thrown down by your own driving circuit.

*"It's not just the engine that's good – so is the chassis. The steering feel is superb, with minimal torque steer effects."*

– RoadandTrack.com, November 2009







YOU HAVE YOUR OWN INDIVIDUAL DRIVING STYLE. NOW YOU HAVE A SYSTEM THAT OPTIMIZES YOUR SET-UP ACCORDINGLY.

There is nothing new in the ability to adjust the set-up of a car, matching performance attributes to your driving conditions. What is noteworthy is offering this level of personalization in a mid-size sedan. This is best represented by Regal CXL Turbo's Interactive Drive Control System. It enables you to choose between three driving modes: Normal, Tour and Sport. Each mode continuously adjusts suspension, steering, throttle, transmission and stability system settings to respond to your preferences and the driving conditions. In this way, the systems are tuned to work together, optimizing Regal's specific response to every road you travel.



#### NORMAL

This is the default setting for the Interactive Drive Control System. It is ideal for city driving and daily commuting. Not that "Normal" is an apt way to describe anything about this system. The shock absorbers read the road up to 500 times per second and continuously adjust the damping of the shocks based on driving conditions.

#### TOUR

For a smoother, more comfortable ride on long highway drives, Tour mode is the ideal setting. It assists in absorbing bumps caused by uneven road surfaces, minimizing the effects felt inside the cabin.

#### SPORT

For the pure CXL Turbo experience, push the Sport button. It activates the most responsive driving mode, with sharper speed-sensitive steering response, quicker throttle action and crisper transmission shifting. The ride is stiffer and the handling is tighter, for a more authoritative command of the road. The system even senses when you are driving more assertively and automatically shifts into the Sport mode. You can further personalize the adjustment of individual settings using the available Navigation System.\*

\*At time of printing, detailed map coverage is available for most major urban areas of the United States and for certain metropolitan areas of Canada (Vancouver, Calgary, Edmonton, Winnipeg, Windsor, London, Toronto, Ottawa, Montreal, Quebec City and Halifax). Coverage is significantly limited outside those areas.





REGAL'S HEIGHTENED CONNECTION WITH THE ROAD BEGINS WITH AN ENHANCED CONNECTION WITH YOUR DRIVING ENVIRONMENT.





**THE RIDE IS FIRM, YET COMFORTABLE. THE SAME CAN BE SAID OF THE SEATING.**

Think of the identifying characteristics of a European sport sedan. A firm ride is right up there – as is seating that offers both tailored support and exceptional comfort. Those attributes are combined to perfection in the new Regal. It isn't only the design and construction of the seats that offer a European feel. All passengers get to enjoy the rich luxurious comfort provided by the leather-appointed seating, with French-stitched seams. For added comfort, the driver and front-passenger seats are heated. And for the height of convenience – how about a windshield humidity sensor that activates the defogger automatically when moisture is detected? Getting the sense of how Regal responds to a full range of needs and desires?



TALK ABOUT INTERACTIVE – REGAL TAKES IT TO A HIGHER LEVEL. YOUR VOICE IS ITS COMMAND.

Regal's concept of an interactive driving experience extends far beyond the bond between driver and machine. It also applies to the plethora of electronic entertainment, communication and information technology on board, from standard Bluetooth® connectivity to the available voice-activated Navigation System\* and command centre. Tell the Navigation System where you are going and it will tell you how best to get there. The command centre enables you to select between navigation, phone or audio menus. Included in the system is a 40 GB\*\* hard drive that not only runs the Navigation System, but can also store thousands of tunes. It also allows you to pause and replay live radio and hear up to 20 minutes of previously recorded programming. The message of Regal's technological sophistication is coming through loud and very clear.

\* At time of printing, detailed map coverage is available for most major urban areas of the United States and for certain metropolitan areas of Canada (Vancouver, Calgary, Edmonton, Winnipeg, Windsor, London, Toronto, Ottawa, Montreal, Quebec City and Halifax). Coverage is significantly limited outside those areas.

\*\* 10 GB music storage, 30 GB navigation.

Here are some of the other technological highlights inside the all-new Regal.

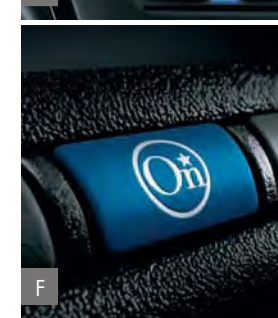
- A/ Steering wheel-mounted Bluetooth® wireless connectivity is standard, providing hands-free mobile phone operation.
- B/ A power 8-way driver's seat is standard and is complemented by a power 4-way lumbar adjuster.
- C/ The standard USB port invites you to plug in your iPod® or other MP3 player – and your library of favourite tunes.
- D/ For the ultimate in audio, a harman/kardon® 320-Watt 9-speaker premium 5.1 matrix sound system is available.

E/ The available Navigation System screen provides precise and comprehensive directions. XM Satellite Radio™† and its 130 channels of programming are included with every Regal.

F/ OnStar®†† and six months of the Directions and Connections Plan are standard. Turn-by-Turn Navigation is included – the simplest and smartest navigation system available. Just push the OnStar button and tell the Advisor where you want to go; then turn-by-turn directions are downloaded to your vehicle. No one offers more ways to help you on the road. Learn more at [onstar.ca](http://onstar.ca)

† Available in 10 Canadian provinces and the 48 contiguous United States. Subscription sold separately after trial period. For more information, visit [xmradio.ca](http://xmradio.ca)

†† Visit [onstar.ca](http://onstar.ca) for coverage map, details and system limitations. Services vary by model and conditions.







FRONT  
CRUMPLE  
ZONE

STEEL  
REINFORCING  
DOOR  
BEAMS

SIDE  
CRUMPLE  
ZONE

RIGID  
PASSENGER  
COMPARTMENT

REAR  
CRUMPLE  
ZONES



**SAFETY IS INTEGRAL TO YOUR PEACE OF MIND. IT'S ALSO INTEGRAL TO EVERY ASPECT OF REGAL'S ENGINEERING.**

Safety requires much more than a full complement of today's expected safety features. It demands an integrated approach to engineering that is evident in everything from its previously noted array of driver control features – to the structural integrity of the frame. Regal's Body Frame Integral structure uses high-strength steel in strategic locations and side-impact protection beams to provide added passenger compartment protection. Regal goes above and beyond with innovations like double-pretensioned front safety belts and a patented Pedal Release System. In addition, rear outboard seat-mounted thorax air bags are available.\* And every Regal includes OnStar's Automatic Crash Response\*\* that alerts an Advisor to call for help – even if you can't. Safety – it's as essential to Regal as it is to you.

\* A NOTE ON CHILD SAFETY: Always use safety belts and proper child restraints, even in vehicles equipped with air bags.  
 \*\* OnStar acts as a link to existing emergency service providers.



**AN EVEN BOLDER VERSION OF THE NEW REGAL? WHAT A CONCEPT.**

If Regal CXL more than whetted your appetite, then Regal CXL Turbo is sure to appeal to your zeal for driving. But the story doesn't end there. Another form of Regal has already turned heads on the auto show circuit. Regal GS concept car. It stands for Gran Sport; it also stands for a new beacon among sport sedans.

Stay tuned.



Regal GS Concept //



## REGAL MODEL OVERVIEW

Regal CXL features include:

- 182 hp 2.4L ECOTEC 4-cylinder engine with Direct Injection and Variable Valve Timing (VVT)
- GM Oil Life Monitoring System
- 6-speed automatic transmission with Driver Shift Control
- 4-wheel disc brakes with ABS and intelligent brake assist
- StabiliTrak electronic stability control system
- Full-function traction control
- 18-in. 13-spoke painted alloy wheels
- Tire pressure monitoring system
- Heated, power exterior mirrors
- Remote keyless entry system
- 6 air bags: dual-stage driver and front-passenger, front and rear inflatable side head curtain, and front-seat side thorax
- Power 8-way driver seat adjuster with power 4-way lumbar support
- Tilt and telescopic steering column
- Leather-wrapped steering wheel with audio system controls
- Driver Information Centre
- Automatic dual-zone climate control with pollen and odour filter
- Auto-dimming interior rear-view mirror
- 7-speaker audio system with CD player, MP3 playback and USB port
- Power windows and programmable door locks
- Cruise control
- Bluetooth phone connectivity
- XM Satellite Radio
- OnStar with 6 months of the Directions & Connections Plan and Turn-by-Turn Navigation.

Regal CXL Turbo supplements the CXL features with:

- 220 hp 2.0L ECOTEC 4-cylinder turbocharged and intercooled engine with Direct Injection and Variable Valve Timing (VVT)
- Power variable-effort steering
- Dual bright exhaust outlets
- Power 8-way front-passenger seat adjuster
- Power 4-way front-passenger lumbar adjuster
- Rear power centre with 120-volt 3-prong household outlet
- Ultrasonic rear parking assist.

## BUICK OWNERSHIP EXPERIENCE

Regal builds on Buick's award-winning quality and complements it with rigorous European engineering standards. The results are clear to see and reveal themselves even further when you are behind the wheel. You can also take to the road with the confidence you receive knowing that the all-new 2011 Buick Regal is backed by the best coverage in Canada:

- 4-year/80,000 km New Vehicle Limited Warranty\*
- 5-year/160,000 km Powertrain Component Limited Warranty with \$0 deductible on repairs and the warranty is fully transferable at no charge\*
- 5-year/160,000 km Courtesy Transportation\*
- 5-year/160,000 km 24/7 Roadside Assistance\*
- 6-year/160,000 km rust-through perforation coverage\*
- 8-year/130,000 km coverage on catalytic converters and powertrain control modules (PCMs).\*

\*Whichever comes first. Conditions and limitations apply. See dealer for details.

### OTHER OWNERSHIP PRIVILEGES AND PROGRAMS:<sup>††</sup>

- **GM Protection Plan (GMPP)** – the only extended service plan backed by the resources and commitment of General Motors; GMPP may be purchased at the time of your sale or subsequently during the New Vehicle Limited warranty period
- **GM Goodwrench Service** – with GM-certified technicians and GM-approved parts, nobody knows your GM vehicle better.

<sup>††</sup>Conditions and limitations apply.

### TO HELP YOU PURCHASE A NEW VEHICLE:

- **GMAC Express Credit Application** – a convenient way to get pre-approved credit towards the purchase of your next GM vehicle
- **GMAC Purchase Financing** – on-the-spot financing at your GM dealership<sup>‡</sup>
- **The GM Card** – eligible cardholders may be able to redeem up to \$3500 in GM Card<sup>®</sup> Earnings toward the total purchase price on select vehicles.<sup>††</sup> For more information on The GM Card please call 1-800-461-3279.

<sup>††</sup>Conditions and limitations apply. <sup>‡</sup>Subject to eligibility.

### INFORMATION RESOURCES:

You can find more information about these programs from your GM dealer, or at these information centres:

- The Buick website at [buick.ca](http://buick.ca)
- The GM Customer Communication Marketing Centre at **1-800-GM-DRIVE (1-800-463-7483)** or **1-800-263-3830** for TDD users)
- For more information about GMAC visit [gmac.ca](http://gmac.ca) or call **1-800-616-4622**.

### A WORD ABOUT THIS BROCHURE

Some of the equipment shown or described throughout this brochure may be available at extra cost. We have tried to make this brochure comprehensive and factual. We reserve the right, however, to make changes at any time, without notice, in prices, colours, materials, equipment, specifications, models and availability. Specifications, dimensions, measurements, ratings and other numbers in this brochure and other printed materials provided at the dealership or affixed to vehicles are approximates based upon design and engineering drawings and prototypes and laboratory tests. Your vehicle may differ due to variations in manufacture and equipment. Since some information may have been adapted since the time of printing, please check with your GM dealer for complete details. General Motors of Canada Limited reserves the right to lengthen or shorten the model year for any product, for any reason, or to start and end model years at different times.

### A WORD ABOUT ASSEMBLY

GM vehicles are equipped with engines and components produced and assembled by different operating units of General Motors, its subsidiaries and suppliers and these engines and components may change or be obtained from different sources from time to time. All such engines and components are approved for use in GM vehicles. Certain equipment ordered may be unavailable at the time of assembly and we suggest that you verify that your vehicle includes the equipment you ordered, or if there are changes, that they are acceptable to you.

### TRADEMARKS

The marks appearing in this brochure including, but not limited to: General Motors, GM, the GM Canada emblem, Buick, the Buick logo, Regal and their respective logos, emblems, slogans and vehicle model names and body designs; and other marks such as Solar-Ray, StabiliTrak and Twilight Sentinel are all trademarks of General Motors and/or General Motors of Canada Limited, its subsidiaries, affiliates or licensors.

GMAC is a registered trademark of the General Motors Acceptance Corporation of Canada, Limited.

OnStar and the OnStar emblem are registered trademarks of the OnStar Corporation.

TheftLock is a registered trademark of Delphi Automotive Systems.

The XM name and related logos are trademarks of XM Canada, Canadian Satellite Radio Inc.

iPod is a trademark of Apple Computer, Inc., registered in the U.S. and other countries.

Bluetooth is a registered trademark of Bluetooth SIG Inc.

harman/kardon is a registered trademark of Harman International Industries, Incorporated.

### COPYRIGHT

©Copyright 2010 General Motors of Canada Limited. All Rights Reserved. All text, images, graphics, and other materials in this brochure are subject to the copyright and other intellectual property rights of General Motors and/or General Motors of Canada Limited. These materials may not be reproduced, distributed or modified without the express written permission of General Motors and/or General Motors of Canada Limited.

Printed in Canada, May 2010.



## REGAL STANDARD FEATURES & OPTIONAL EQUIPMENT

SAFETY & SECURITY	CXL	
	CXL	Turbo
AIR BAGS – dual-stage, driver and front-passenger, frontal with Passenger Sensing System	S	S
AIR BAGS – front-to-rear, head curtain side-impact	S	S
AIR BAGS – driver and front-passenger, seat-mounted side-impact	S	S
AIR BAGS – rear-passenger outboard, seat-mounted side-impact	O <sup>1</sup>	O <sup>2</sup>
BRAKE/TRANSMISSION SHIFT INTERLOCK	S	S
DOOR LOCKS – power, programmable with lock-out protection	S	S
DOOR LOCKS – rear doors, child-security	S	S
HEADLIGHTS – halogen, Daytime Running Lights with automatic light control (includes Twilight Sentinel® with delay feature)	S	S
HEADLIGHTS – Xenon High-Intensity Discharge (HID) with LED Daytime Running Lights and automatic light control (includes Twilight Sentinel with delay feature)	–	O <sup>2</sup>
KEYLESS ENTRY SYSTEM – remote, with Panic feature	S	S
ONSTAR IN-VEHICLE COMMUNICATIONS AND ASSISTANCE SERVICE – includes 6 months of the Directions and Connections Plan with Turn-by-Turn Navigation*	S	S
SAFETY RESTRAINTS – LATCH (Lower Anchors and top Tethers for Children), rear seats	S	S
STABILITRAK – electronic stability control system	S	S
THEFT-DETERRENT SYSTEM – audible/visible, content theft alarm	S	S
THEFT-DETERRENT SYSTEM – electronic immobilizer	S	S
TRACTION CONTROL – electronic, full-function, all-speed	S	S
ULTRASONIC REAR PARKING ASSIST – audible rear obstacle detection	O <sup>3</sup>	S

MECHANICAL		
BATTERY – with run-down protection	S	S
BRAKES – power, 4-wheel disc	S	S
BRAKES – 4-wheel anti-lock braking system (ABS) with intelligent brake assist	S	S
DRIVE – front-wheel drive	S	S
ENGINE – 2.4L ECOTEC I-4 with VVT and Direct Injection Horsepower – 182 @ 6700 rpm; Torque – 172 lb.-ft. @ 4900 rpm	S	–
ENGINE – 2.0L Turbocharged ECOTEC I-4 with VVT and Direct Injection Horsepower – 220 @ 5300 rpm; ** Torque – 258 lb.-ft. @ 2000 rpm**	–	S
EXHAUST SYSTEM – aluminized stainless steel	S	S
EXHAUST SYSTEM – dual hidden exhaust tips	S	–
EXHAUST SYSTEM – dual bright exhaust tips	–	S
STEERING – power, rack-and-pinion	S	–
STEERING – power, rack-and-pinion, variable-effort	–	S
SUSPENSION – 4-wheel independent, 4-link rear	S	S
SUSPENSION – 4-wheel independent, continuously-variable damping, includes Interactive Drive Control System	–	O <sup>4</sup>
TRANSMISSION – 6-speed automatic with overdrive and Driver Shift Control	S	S

EXTERIOR		
FOG LIGHTS – halogen, projector beam	S	S
GLASS – Solar-Ray®, tinted	S	S
MIRRORS – manual folding, power remote control, heated	S	S
SUNROOF – power, sliding glass panel with express-open feature	O <sup>5</sup>	O <sup>6</sup>
TIRES – P235/50R18 all-season, V-rated†	S	S
TIRES – P245/40R19 all-season, V-rated†	–	O <sup>4</sup>
WHEELS – 18" x 8" 13-spoke painted alloy (A)	S	S
WHEELS – 19" x 8.5" 10-spoke ultra-bright machined alloy (B)	–	O <sup>4</sup>
WINDSHIELD WIPERS – 2-speed with variable delay (intermittent)	S	S

INTERIOR	CXL	
	CXL	Turbo
AIR CONDITIONING – automatic, dual-zone with windshield humidity sensor and auto defog activation	S	S
AIR CONDITIONING – rear seat heating and cooling outlets	S	S
AIR FILTRATION SYSTEM – pollen filter	S	S
AUXILIARY POWER OUTLETS – two	S	S
AUXILIARY POWER OUTLET – rear power centre with 120-volt AC household outlet	O <sup>3</sup>	S
CARGO CONVENIENCE NET	S	S
CONSOLE – front floor with armrest, storage compartment and dual cupholders	S	S
CRUISE CONTROL – electronic with resume, coast and decelerate/accelerate features	S	S
FLOOR MATS – front and rear, carpeted	S	S
HEATER DUCTS – rear-seat, floor	S	S
INSTRUMENTATION – analogue cluster (includes speedometer, tachometer, coolant temperature and fuel gauges)	S	S
INSTRUMENTATION – Driver Information Centre with programmable features including vehicle security settings, key fob-controlled vehicle personalization settings, trip odometer, exterior temperature display, GM Oil Life Monitoring System and compass	S	S
INSTRUMENTATION – tire pressure monitoring system	S	S
LIGHTS – courtesy with delayed entry/exit, theatre dimming, front footwell, front map lights, rear reading lights, glovebox and trunk	S	S
LIGHTS – ambient LED lighting on front and rear doors and console	S	S
MIRROR – rear-view with auto-dimming feature and OnStar controls	S	S
RETAINED ACCESSORY POWER	S	S
STEERING COLUMN – tilt and telescopic adjustable	S	S
STEERING WHEEL – leather-wrapped with sound system controls	S	S
SUNSHADES – LH and RH padded; sliding with illuminated vanity mirrors	S	S
TRUNK – release, power remote	S	S
WINDOWS – power, driver and front-passenger express-up/down, rear passenger express-down and window lock-out features	S	S

SEATING		
HEATED RECLINING FRONT BUCKET SEATS with leather-appointed seating surfaces, seatback map pockets and adjustable head restraints	S	S
DRIVER SEAT with power 8-way adjuster	S	S
DRIVER SEAT with power 4-way lumbar adjuster	S	S
FRONT-PASSENGER SEAT with manual 4-way adjuster with power height adjuster	S	–
FRONT-PASSENGER SEAT with power 8-way seat adjuster	O <sup>3</sup>	S
FRONT-PASSENGER SEAT with power 4-way lumbar adjuster	O <sup>3</sup>	S
SEATBACKS – rear, 60/40 split-folding with a centre armrest and dual cupholders	S	S

ENTERTAINMENT SYSTEMS		
REGAL SOUND SYSTEMS include an electronically tuned AM/FM stereo with CD player, MP3 playback capability, seek, scan, speed-compensated volume control, auto-tone control, TheftLock®, and auxiliary audio input jack	S	S
AM/FM CD stereo with 40 GB Hard Drive Device and HDD-based Navigation System†† with multi-function control knob	O <sup>7</sup>	O <sup>8</sup>
7-speaker sound system	S	S
9-SPEAKER HARMAN/KARDON PREMIUM SOUND SYSTEM with 320-Watt amplifier	O <sup>1</sup>	O <sup>2</sup>
BLUETOOTH – in-vehicle mobile phone connectivity system	S	S
XM SATELLITE RADIO†	S	S
USB PORT – input jack for iPod or other MP3 player or mass media device, located inside centre console	S	S

REGAL CXL PREFERRED EQUIPMENT GROUPS (PEGs)	1SB	1SC	1SD	1SE	1SF
SUNROOF – power, sliding glass panel with express-open feature	•		•	•	•
AUXILIARY POWER OUTLET – rear power centre with 120-volt AC household outlet		•	•	•	•
SEATING – power 8-way front-passenger seat adjuster		•	•	•	•
SEATING – power 4-way front-passenger lumbar adjuster		•	•	•	•
ULTRASONIC REAR PARKING ASSIST – audible rear obstacle detection		•	•	•	•
AIR BAGS – rear-passenger outboard, seat-mounted side-impact				•	•
AUDIO SYSTEM – 9-speaker harman/kardon premium sound system with 320-Watt amplifier				•	•
NAVIGATION SYSTEM – includes AM/FM stereo with CD player, 40 GB Hard Drive Device and HDD-based Navigation System†† with multi-function control knob					•

REGAL CXL TURBO PREFERRED EQUIPMENT GROUPS (PEGs)	1SJ	1SK	1SL	1SN	1SP
SUNROOF – power, sliding glass panel with express-open feature	•		•	•	•
AIR BAGS – rear-passenger outboard, seat-mounted side-impact		•	•	•	•
AUDIO SYSTEM – 9-speaker harman/kardon premium sound system with 320-Watt amplifier		•	•	•	•
HEADLIGHTS – Xenon High-Intensity Discharge (HID) with LED Daytime Running Lights and automatic light control (includes Twilight Sentinel with delay feature)		•	•	•	•
NAVIGATION SYSTEM – includes AM/FM stereo with CD player, 40 GB Hard Drive Device and HDD-based Navigation System†† with multi-function control knob			•		•
WHEELS – 19" x 8.5" 10-spoke ultra-bright machined alloy (B) (includes P245/40R19 V-rated, all-season† tires)				•	•
SUSPENSION – continuously variable damping, includes Interactive Drive Control System				•	•

## WHEELS



A – 18" 13-spoke painted alloy

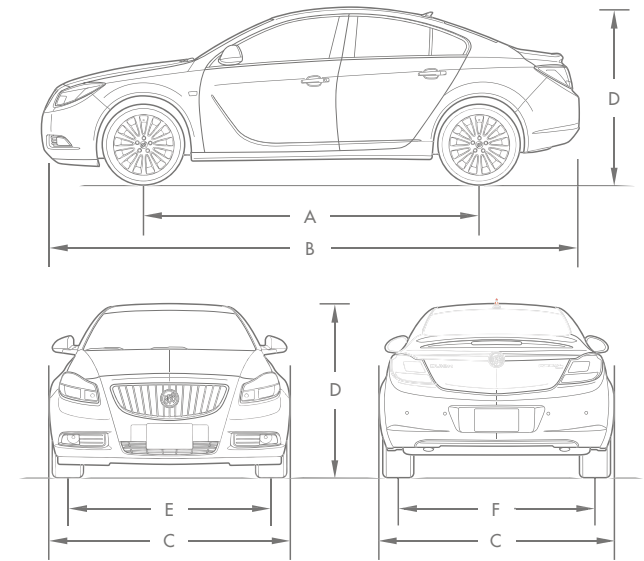


B – 19" 10-spoke ultra-bright machined alloy

S – Standard, O – Optional individually or in combination with other optional equipment.

- 1 – Included with Preferred Equipment Group 1SE and 1SF.
- 2 – Included with Preferred Equipment Group 1SK, 1SL, 1SN and 1SP.
- 3 – Included with Preferred Equipment Group 1SC, 1SD, 1SE and 1SF.
- 4 – Included with Preferred Equipment Group 1SN and 1SP.
- 5 – Included with Preferred Equipment Group 1SB, 1SD, 1SE or 1SF.
- 6 – Included with Preferred Equipment Group 1SJ, 1SL, 1SN and 1SP.
- 7 – Included with Preferred Equipment Group 1SF.
- 8 – Included with Preferred Equipment Group 1SL and 1SP.

## DIMENSIONS



EXTERIOR, MM (IN.)	
WHEELBASE (A)	2738 (107.8)
LENGTH (B)	4831 (190.2)
WIDTH (C)	1857 (73.1)
HEIGHT (D)	1484 (58.4)
FRONT TREAD (E)	1585 (62.4)
REAR TREAD (F)	1588 (62.5)

INTERIOR, MM (IN.) FRONT/REAR	
HEADROOM	986/935 (38.8/36.8)
LEGROOM	1069/947 (42.1/37.3)
SHOULDER ROOM	1440/1382 (56.7/54.4)
HIP ROOM	1407/1328 (55.4/52.3)

CAPACITIES/WEIGHT	
TRUNK, L (CU. FT.)	402 (14.2)
FUEL TANK, L (IMP. GAL.)	70 (15.4)
CURB WEIGHT (EST.), KG (LB.) – CXL – CXL Turbo	1633 (3600) 1655 (3671)

FUEL CONSUMPTION RATINGS, L/100 KM (MPG)††	HIGHWAY	CITY
2.4L ECOTEC I-4/AUTOMATIC TRANSMISSION	6.5 (43)	10.8 (26)
2.0L TURBOCHARGED ECOTEC I-4/AUTOMATIC TRANSMISSION	N/A*	N/A*
2.0L TURBOCHARGED ECOTEC I-4/MANUAL TRANSMISSION	N/A*	N/A*

†† Based on GM testing in accordance with approved Transport Canada test methods. Your actual fuel consumption may vary. Please refer to the Natural Resources Canada's Fuel Consumption Guide Ratings.

◆ Fuel consumption ratings not available at time of printing.

\* Visit onstar.ca for coverage map, details and system limitations. Services vary by model and conditions.

\*\* Based on GM testing. Official SAE certification not available at time of printing.

† All-season tires may not satisfy winter tire requirements in all regions of the country. Tires specifically designed for severe winter conditions and marked with the "winter tire" symbol ❄️ may be required during certain months or in certain regions. Contact your Provincial, Municipal or local road authority for information regarding which tires are required in your particular area.

†† At time of printing, detailed map coverage is available for most major urban areas of the United States and for certain metropolitan areas of Canada (Vancouver, Calgary, Edmonton, Winnipeg, Windsor, London, Toronto, Ottawa, Montreal, Quebec City and Halifax). Coverage is significantly limited outside those areas.

‡ Available in 10 Canadian provinces and the 48 contiguous United States. Subscription sold separately after trial period. For more information, visit xmradio.ca



## INTERIOR COLOURS



EBONY INTERIOR WITH LEATHER-APPOINTED SEATING, EBONY TRIM AND PIANO BLACK ACCENTS.

CASHMERE INTERIOR WITH LEATHER-APPOINTED SEATING, COCOA TRIM AND WOODGRAIN ACCENTS.

CASHMERE INTERIOR WITH LEATHER-APPOINTED SEATING, COCOA TRIM AND WOODGRAIN ACCENTS.



## EXTERIOR/INTERIOR COLOUR COMPATIBILITY

EXTERIOR COLOURS	INTERIOR COLOURS	
	AFA – Ebony*	AFB – Cashmere/Cocoa**
GAL – Granite Gray Metallic	•	-
GAN – Quicksilver Metallic	•	-
GAR – Carbon Black Metallic†	•	•
GAZ – Summit White	•	•
GBF – Stone Metallic	•	•
GEU – Majestic Blue Metallic	•	•
GLZ – Ruby Red Metallic††	•	•
GOP – Espresso Bronze Metallic††	•	•

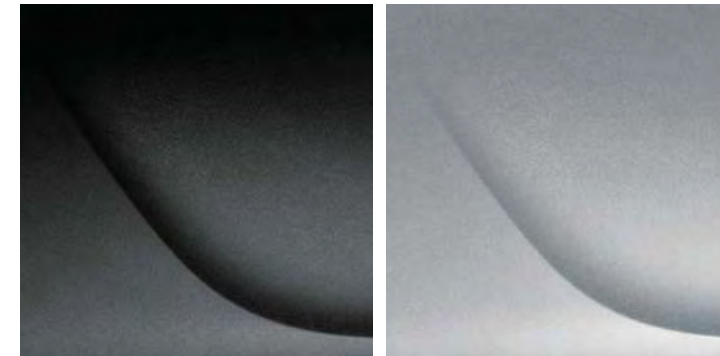
\* Includes Piano Black interior trim accents.

\*\* Includes wood grain interior trim accents.

† Available at extra cost.

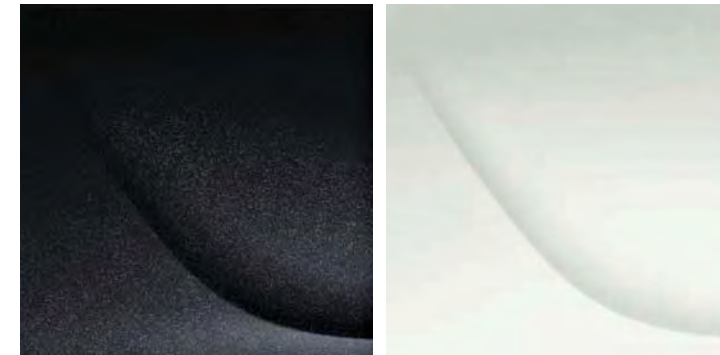
†† Interim availability.

## EXTERIOR COLOURS



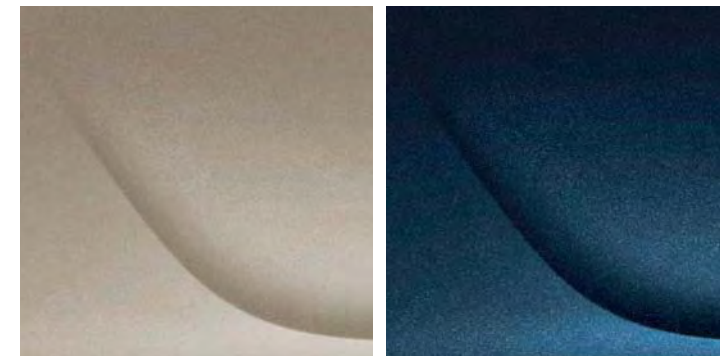
GAL – Granite Gray Metallic

GAN – Quicksilver Metallic



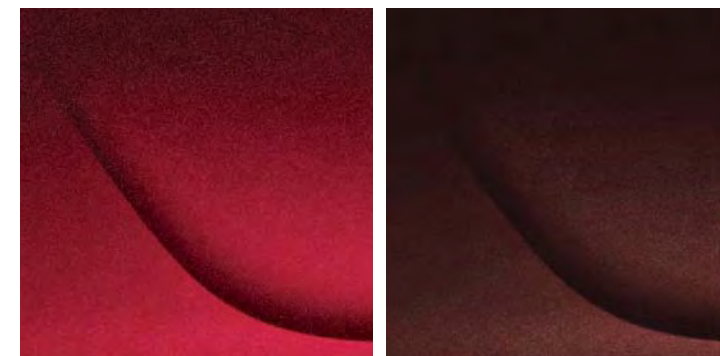
GAR – Carbon Black Metallic†

GAZ – Summit White



GBF – Stone Metallic

GEU – Majestic Blue Metallic



GLZ – Ruby Red Metallic††

GOP – Espresso Bronze Metallic††

## ACCESSORIES

### MORE REGALIA.

The all-new 2011 Buick Regal gives you a number of ways to personalize your driving experience. You can take that concept even further with the addition of available dealer-installed Buick Accessories. They can enhance everything from Regal's style and its sportiness to its functionality – even your peace of mind.

Why Buick Accessories? They are the only ones that were integrated into Regal's comprehensive vehicle development process, ensuring excellent fit, finish and functionality. And they are the only accessories backed by Buick's 4-year/80,000 km New Vehicle Limited Warranty.\* Ask your sales consultant for a complete list of Buick Accessories for Regal, or visit gm.ca

\*Whichever comes first, when permanently installed by the dealer at the time you purchase your new vehicle or for the remainder of the New Vehicle Limited Warranty if installed after the time of your vehicle purchase, but no less than 12 months.



Illuminated Doorsill Plates (Interim availability)

Brushed Aluminum Finished Pedal Covers (Manual transmission pedal covers interim availability)



Cargo Area Tray

All-weather Floor Mats



19" 7-spoke chrome-plated wheel

18" 5-spoke alloy wheel, painted gray with polished accents

Due to limitations in the printing process, the colours shown may differ slightly from the actual colour. For more accurate colour samples, ask your sales consultant to see the dealer showroom vehicle colour display.

† Available at extra cost.

†† Interim availability.