



**2012 JUKE**





## INNOVATION UNLEASHED.

Kick convention to the curb. JUKE®, the Alpha male of an all-new breed: the Turbo-charged Sport Cross. The intentions are clear. Ride high, stand out, and move quickly. All while customizing your ride on the go. The turbocharged engine delivers serious boost when you need it and sips fuel when you don't, while an innovative All-Wheel Drive system turns power into grip. Everything you thought a vehicle was, just got turned on its head. JUKE. Innovation unleashed. Innovation for all.





LATE NIGHT TO EARLY LIGHT.  
MY FINEST HOURS.



Nissan JUKE SL AWD shown in Gun Metallic with Leather Navigation Package.



IT STARTS AT THE EDGE OF  
**POTENTIAL.**



*Innovation that's bellissimo.* Nissan designers find inspiration wherever there is passion. And in the case of JUKE's evocative centre console, the inspiration came from the curvaceous fuel tank of an Italian sport bike. It's sure to get you revved up every time you look at it.



NEW WORLD.  
**YOUR JUKE.**



**Nissan JUKE SL AWD** shown in Sapphire Blue Onyx with Leather Navigation Package.





# WE LOOK AT THINGS DIFFERENTLY.

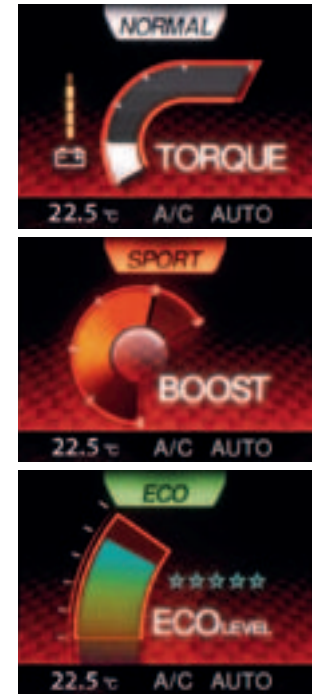
**Now you can, too.** The next few pages will help fill you in on what it's like to have a JUKE in your life. Need to tackle some mountain curves? Hit the Sport mode button on the innovative Integrated Control (I-CON) system. Lumbering semi ahead? Pass it in seconds with the Direct Injection Gasoline (DIG™) turbo engine. Looking to make a big first impression? With a one-of-a-kind interior that melds car and motorcycle into one, that's a given. As you get to know JUKE a little better, we hope you find what you're looking for – plus a few surprises.

Nissan JUKE SL shown in Black/Red Leather with Leather Navigation Package.



ADAPT AT WILL.

Like a great smartphone, JUKE's available Integrated Control (I-CON) system puts everything you need in one place. Tell JUKE what kind of mood you're in, and it serves up a custom-tailored drive. All your climate control functions are there too. I-CON even lets you know how you're doing, with cool displays for all the different functions you can call up.



**Torque It. Boost It. Save It.** – In JUKE, it's up to you. Drive in Normal mode for the best combination of performance and efficiency. Want to up the ante? Lock in Sport mode and steering feel, transmission gearing and throttle response quickly adjust to make every curve count. And when it's time to slow things down, hit the Eco mode button and get the most out of every drop of fuel.



**Double Agent** – I-CON puts you in charge of your ride style and interior comfort. In D-Mode, the system gives you the ability to rapidly adapt to changing driving conditions. With a push of the Climate button, I-CON switches displays and now becomes your control centre for all things comfort.



**Get the Stats** – Count on the drive computer to keep you in the know. Loaded with information about everything from maximum G-force to total trip kilometres to your daily fuel consumption record. The more you know, the better you drive.

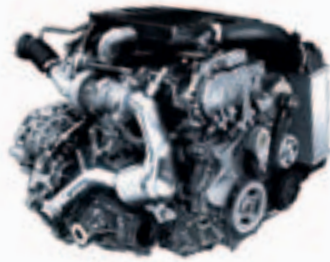


**MOVE ON  
COMMAND.**

Sometimes you just get stuck behind the wrong people. Passing lane ahead! Tap into the turbo and leave them in the rearview mirror. And when it's time to get a grip, count on JUKE's available torque vectoring All-Wheel Drive system to make sure all that power gets to the pavement.



1.6-L Direct Injection Gasoline (DIG™) Turbo Engine



Nissan JUKE SL AWD shown in Brilliant Blue with accessories.



**1.6-L Direct Injection Gasoline (DIG™) Turbo** – If you could design an engine to provide the ideal balance of efficiency and power, this would be it. Turbo boost gives you more than enough passing power when you need it, while the compact engine design and advanced direct injection deliver fuel-sipping economy when you don't.

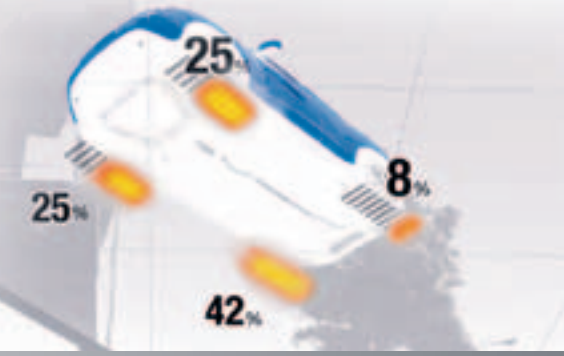
**Primary and Secondary Fuel Injection** – Two levels of fuel injection give you the perfect one-two punch. By spraying fuel directly into the combustion chamber twice before ignition, the combustion pattern is optimized. Meaning greater efficiency, torque and power. Now, that's a knockout.

**Continuously Variable Transmission (CVT) with Sport Mode** – Smooth as butter and fun to drive. Unlike traditional automatic transmissions, JUKE's available CVT transmission eliminates the need for gear-hunting and delivers a seamless wave of power. In case you miss the feeling of gears, you can engage Sport mode and bring it right back. Of course, a manual transmission is still available for the die-hard enthusiast.

**Electric Power Steering** – Every little bit helps. JUKE uses electric power steering instead of hydraulic to cut down on the amount of power needed from the engine. And that means more kilometres out of every tank. Plus, the system automatically adjusts steering feel based on vehicle speed.

**Torque Vectoring AWD** – Taking on a twisty mountain road? Go for it. Need to tackle a sharp highway on-ramp? Done. JUKE's innovative AWD gives you the handling response you deserve. Unlike traditional AWD systems that only distribute power front to back, torque vectoring AWD can also adjust power side to side on the rear wheels, so you can count on solid grip through the turn.

**AWD Display** – A digital readout between the gauges provides real-time AWD feedback for all four corners.







Nissan JUKE SL shown in Black/Red Leather with Leather Navigation Package.

## TAKE CONTROL OF THE SITUATION.

**Make easy work out of finding that new club. Dial in your favourite artist. Or call ahead, with both hands on the wheel. In JUKE, your life never misses a beat.**

**A. Nissan Navigation System** – JUKE's advanced navigation system gives you all the tools to make every trip a snap. Turn-by-turn Voice Guidance combined with available real-time traffic reports from XM NavTraffic® get you around gridlock and to your destination on time.<sup>1,2</sup>

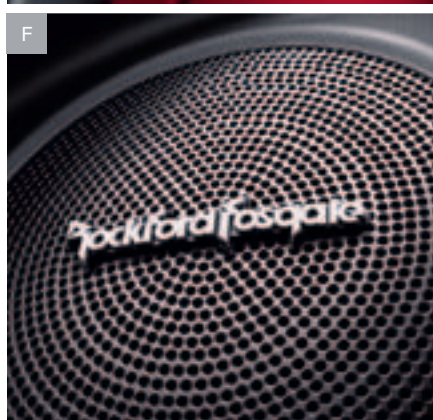
**B. RearView Monitor** – Need to squeeze into a tight parking spot? You got it. JUKE's available RearView Monitor helps you see what's directly behind you.<sup>3</sup>

**C. Nissan Intelligent Key®** – Never fumble with keys again. Just leave the available Nissan Intelligent Key® in your pocket or purse. As you walk up to the vehicle, it senses the key and allows you to unlock the door with a tap of a button on the door handle. Once inside, use the Push Button Ignition to start the engine.

**D. Audio Inputs** – All your music is just a plug away. JUKE features an available USB input that is ideal for an iPod® or playing MP3s off a thumb drive. And in case you have any music you want to play from a different source, there's an auxiliary audio input.<sup>4,5</sup>

**E. Bluetooth® Hands-Free Phone System** – Keep up those connections on the move. With standard next-generation Bluetooth® technology on hand, JUKE will store your phone's address book so you can use the voice-activation feature to make calls by name.<sup>6</sup>

**F. Upgraded Audio** – Lock in that playlist and turn up the volume. The optional Rockford Fosgate-powered subwoofer makes every beat hit hard, while the standard MP3 CD player means your entire CD collection can come along for the ride.



<sup>1</sup>Factory installed option. Never program while driving. GPS mapping may not be detailed in all areas or reflect current road regulations. <sup>2</sup>XM NavTraffic® is available in select North American markets. In Canada, at time of printing, incident data is available for 7 metropolitan areas of Canada (Vancouver, Calgary, Edmonton, Toronto, Ottawa, Montreal and Quebec City). Limited flow data is available for Toronto. Subscription sold separately after trial period. Subscriptions subject to customer agreement at xmradio.ca. Fees and programming subject to change. © 2011 Sirius XM Canada Inc. XM name and XM NavTraffic are registered trademarks of Sirius XM Radio Inc. All other trademarks and channel names are property of their respective owners. <sup>3</sup>Parking aid/convenience feature. Cannot completely eliminate blind spots or warn of moving objects. May not detect every object.

Always check surroundings before moving vehicle. Not a substitute for proper backing procedures. Always turn to check what is behind you before backing up. <sup>4</sup>Driving is serious business and requires your full attention. Do not operate any devices connected to the USB or auxiliary audio input jack while driving. <sup>5</sup>Always give your full attention to driving. Avoid operating your iPod® in such a way that you can be distracted during vehicle operation. See dealer for details. iPod is a registered trademark of Apple, Inc. All rights reserved. iPod not included. <sup>6</sup>Availability of specific features is dependent upon the phone's Bluetooth® support. Please refer to your phone Owner's Manual for details. The Bluetooth word mark and logos are owned by Bluetooth SIG, Inc., and any use of such marks by Nissan is under licence.





A



C



B

## TRUST IN YOUR PRACTICAL SIDE.

**When another late night gig is in order, JUKE stands ready with multiple storage options to make it a success. Add to that plenty of seat configurations, so your crew doesn't have to miss out. Then, drop in a solid lineup of advanced safety features. This is definitely going to be a night to remember.**

**A. 1017 Litres (35.9 Cubic Feet)** – Drop the seats down and load it up. With the rear seats folded flat, you get a cavernous 1017 litres (35.9 cubic feet) of cargo space. Now there's no excuse to not bring everything but the kitchen sink.

**B. Clever Storage** – Check under the rear cargo area floor and you'll find a secret storage stash. It's just the right size to store all your roadside safety equipment or anything you want to keep out of sight. (FWD models only.)

**C. Six Standard Airbags** – 6 standard airbags wrap you in safety. Two dual-stage supplemental front airbags equipped with seat belt sensors and an occupant-classification sensor. Supplemental airbags for side-impact protection are built into each front seat. And two roof-mounted curtain side-impact supplemental airbags to help provide head protection for both rows of outboard occupants!<sup>1</sup>

**Active Head Restraints** – Front-seat Active Head Restraints help reduce the chance of whiplash injuries to you and your front passenger by moving up and forward during certain rear-end collisions.

**VDC/TCS/ABS** – Standard Vehicle Dynamic Control (VDC) helps the driver maintain directional control under certain conditions.<sup>2</sup> Get a grip with standard Traction Control System (TCS). It senses when a drive wheel starts to slip and reduces engine power or applies brake pressure to help restore grip. And maintain steering control when stopping using JUKE's Anti-lock Braking System (ABS).

**Brake Override Technology** – Like every Nissan since 2005, JUKE comes standard with Brake Override Technology. It's designed to help slow down your vehicle and bring it to a safe stop in an emergency by overriding accelerator input and reducing engine power when the accelerator and brake pedals are applied simultaneously.

<sup>1</sup>Airbags are only a supplemental restraint system; always wear your seat belt. Even with the occupant-classification sensor, rear-facing child restraints should not be placed in the front-passenger's seat. Also, in addition to any other requirement of applicable law, all children 12 and under should ride in the rear seat properly secured in child restraints, booster seats, or seat belts according to their size. Airbags will only inflate in certain accidents; see your Owner's Manual for more details. Inflated airbags shown for illustration purposes only; actual coverage may differ. Airbags deflate after deployment. <sup>2</sup>VDC, which should remain on when driving except when freeing the vehicle from mud or snow, cannot prevent accidents due to abrupt steering, carelessness, or dangerous driving techniques. Always drive safely. Cargo and load capacity limited by weight and distribution. Always secure all cargo.





## THERE'S A JUKE FOR YOU



### SV

▪ 1.6-litre Direct Injection Gasoline (DIG™) turbo 4-cylinder engine ▪ Torque vectoring All-Wheel Drive (AWD) or Front-Wheel Drive (FWD) ▪ Xtronic CVT® with Sport mode or 6-speed manual transmission ▪ 17" Aluminum-alloy wheels ▪ AM/FM/CD audio system with MP3/WMA CD playback capability, auxiliary audio input and Interface System for iPod® ▪ Bluetooth® Hands-Free Phone System ▪ Power windows, power door locks and remote keyless entry ▪ 60/40 Split fold-down rear seatbacks ▪ 6 Standard airbags ▪ Vehicle Dynamic Control (VDC) with Traction Control System (TCS) ▪ Rear privacy glass ▪ Premium cloth seat trim ▪ Leather-wrapped steering wheel ▪ Passenger seatback pocket

### SL

Includes SV features, plus:  
 ▪ Integrated Control (I-CON) system with Automatic Climate Control ▪ Heated front seats ▪ Nissan Intelligent Key® with Push Button Ignition ▪ Fog lights ▪ Power sliding glass moonroof with one-touch open/close and tilt feature

## SPECIFICATIONS

Engine	SV	SL
MR16DDT – 1.6-litre Direct Injection Gasoline (DIG™) DOHC		
16-valve turbocharged 4-cylinder engine	■	■
Horsepower – 188 HP @ 5600 rpm		
Torque – 177 lb-ft @ 2000–5200 rpm		
Emissions – Tier 2, Bin 5 (LEV2–ULEV CA)	■	■
Continuously Variable Valve Timing Control System (CVTCS) on intake and exhaust valves	■	■
Nissan Direct Ignition System with double-tipped iridium spark plugs	■	■
Electronic drive-by-wire throttle	■	■
Engine block heater	■	■

Drivetrain	SV	SL
Front-Wheel Drive (FWD)	■	■
Torque vectoring All-Wheel Drive (AWD)	□	□
6-speed manual transmission (FWD only)	■	■
Xtronic CVT® (Continuously Variable Transmission) with Sport mode	□	□

Wheel/Tires	SV	SL
17" x 7" 5-split spoke aluminum-alloy wheels	■	■
P215/55R17 all-season tires	■	■

Brakes	SV	SL
11.7" Front vented disc/11.5" rear disc brakes	■	■
4-wheel Anti-lock Braking System (ABS)	■	■
Electronic Brake force Distribution (EBD)	■	■
Brake Assist (BA)	■	■

Suspension/Steering	SV	SL
Front: Independent strut suspension	■	■
Rear: Torsion beam suspension (FWD only)	■	■
Rear: Multi-link independent suspension (AWD only)	□	□
Front and rear stabilizer bars	■	■
Vehicle-speed-sensitive electric power steering	■	■

Exterior	SV	SL
Fog lights		■
Power sliding glass moonroof with one-touch open/close and tilt feature		■
Dual power heated outside mirrors	■	■
Rear privacy glass	■	■

Audio	SV	SL
AM/FM/CD audio system	■	■
6 Speakers	■	■
6 Upgraded speakers		LN
Rockford Fosgate 8" subwoofer and amplifier		LN
XM® Satellite Radio¹		LN
MP3/WMA CD playback capability	■	■
Auxiliary audio input jack	■	■
Interface System for iPod®	■	■
USB connection port for iPod® interface and other compatible devices		LN
Radio Data System (RDS)	■	■
Speed-sensitive volume control	■	■
Steering-wheel-mounted audio controls	■	■

Interior	SV	SL
Nissan Navigation System with 127 mm (5.0") colour touch-screen monitor		LN
XM NavTraffic®²		LN
Bluetooth® Hands-Free Phone System	■	■
RearView Monitor		LN
Drive computer with outside temperature display	■	■
Integrated Control (I-CON) system	■	■
Air conditioning	■	■
Automatic Climate Control (ACC)		■
In-cabin microfilter	■	■
Steering-wheel-mounted cruise control	■	■
Power windows with driver's window one-touch auto-up/down	■	■
Power door locks with auto-locking feature	■	■
Nissan Intelligent Key® with Push Button Ignition	■	■

Interior (Continued)	SV	SL
Integrated key with remote keyless entry	■	■
Tilt steering column	■	■
Variable intermittent windshield wipers	■	■
Intermittent rear wiper	■	■
Retractable cargo cover	■	■
Height-adjustable front seat belts	■	■
Dual visor vanity mirrors	■	■
Front map lights	■	■
12-volt DC power outlet	■	■
Cup holders (2 front) and bottle holders (2 rear)	■	■
Under-floor storage (FWD)	■	■

Seating/Appointments	SV	SL
6-way manual driver's seat	■	■
4-way manual front passenger's seat	■	■
Heated front seats	■	■
60/40 Split fold-flat rear seatbacks	■	■
Front passenger seatback pocket	■	■
Premium cloth seat trim	■	■
Leather seating surfaces		LN
Leather-wrapped steering wheel	■	■
Leather-wrapped shift knob	■	■
Painted centre console and door trim accents	■	■
Carpeted floor mats	■	■
Carpeted cargo mat	AC	AC

Safety/Security	SV	SL
Nissan Advanced Airbag System with dual-stage supplemental front airbags with seat belt sensors and occupant-classification sensor	■	■
Driver and front-passenger seat-mounted side-impact supplemental airbags	■	■
Roof-mounted curtain side-impact supplemental airbags for front and rear-seat outboard occupant head protection	■	■
Vehicle Dynamic Control (VDC) with Traction Control System (TCS)	■	■
Tire Pressure Monitoring System (TPMS)	■	■
3-point ALR/ELR passenger seat belt system (ELR for driver)	■	■
Front seat belts with pre-tensioners and load limiters	■	■
Front-seat Active Head Restraints	■	■
LATCH System (Lower Anchors and Tethers for CHildren)	■	■
Energy-absorbing steering column	■	■
High-strength steel side-door guard beams	■	■
Zone Body construction with front and rear crumple zones	■	■
Hood-buckling creases	■	■
Immobilizer Key System	■	■
Anti-theft system	■	■

## PACKAGE

<b>LN</b> <b>Leather Navigation Package</b>
Nissan Navigation System with 127 mm (5.0") colour touch-screen monitor
RearView Monitor
XM® Satellite Radio¹
XM NavTraffic®²
6 Upgraded speakers
Rockford Fosgate 8" subwoofer and amplifier
USB connection port for iPod® interface and other compatible devices
Leather seating surfaces

## DIMENSIONS/CAPACITIES

Exterior Dimensions – mm (inches)	
Wheelbase	2530 (99.6)
Overall length	4125 (162.4)
Overall width	1765 (69.5)
Overall height	1570 (61.8)
Track width (front/rear) – FWD	1525/1525 (60.0/60.0)
Track width (front/rear) – AWD	1525/1505 (60.0/59.3)

Interior Dimensions – mm (inches)	
<b>Front/rear</b>	
Head room without moonroof	1007/933 (39.6/36.7)
With moonroof	980/933 (38.6/36.7)
Leg room	1068/815 (42.1/32.1)
Hip room	1308/1229 (51.5/48.4)
Shoulder room	1361/1305 (53.6/51.4)
Step-in height	423/435 (16.7/17.1)

Capacities	
Interior passenger volume – L (cu. ft.)	
Without moonroof	2455 (86.7)
With moonroof	2418 (85.4)
Cargo volume – L (cu. ft.)	
With rear seat up	297 (10.5)
With rear seat down	1017 (35.9)
Fuel tank – L (Imp gal) – FWD/AWD	50.0 (13.2)/45.0 (11.8)

Cargo Space – mm (inches)	
Length	675 (26.6)
Width	1409 (55.5)
Height	681 (26.8)

Curb Weights – kg (lbs.)		
<b>FWD</b>	<b>SV</b>	<b>SL</b>
Manual transmission	1313 (2895)	1323 (2917)
Xtronic CVT	1344 (2963)	1354 (2985)
<b>AWD</b>		
Manual transmission	N/A	N/A
Xtronic CVT	1430 (3153)	1441 (3177)

2012 Fuel Consumption Estimates – L/100 km (mpg)			
<b>City/Hwy</b>	<b>SV</b>	<b>SL</b>	
<b>FWD</b>			
Manual transmission	8.2 (34)/6.4 (44)	8.2 (34)/6.4 (44)	
Xtronic CVT	7.5 (39)/6.1 (46)	7.5 (39)/6.1 (46)	
<b>AWD</b>			
Manual transmission	N/A	N/A	
Xtronic CVT	8.0 (35)/6.6 (43)	8.0 (35)/6.6 (43)	

Actual mileage may vary with driving conditions – use for comparison only.

■ Standard    AC Accessory  
 □ Optional    LN Part of Leather Navigation Package

¹XM® Satellite Radio is available in the 10 Canadian provinces and the 48 contiguous United States. Basic monthly subscription required and sold separately after trial period. Subscription subject to customer agreement at xmradio.ca. All fees and programming subject to change. © 2011 Sirius XM Canada Inc. The Sirius and XM names and all related marks and logos are trademarks of Sirius XM Radio Inc. All other trademarks are the property of their respective owners. ²XM NavTraffic® is available in select North American markets. In Canada, at time of printing, incident data is available for 7 metropolitan areas of Canada (Vancouver, Calgary, Edmonton, Toronto, Ottawa, Montreal and Quebec City). Limited flow data is available for Toronto. Subscription sold separately after trial period. Subscriptions subject to customer agreement at xmradio.ca. Fees and programming subject to change. © 2011 Sirius XM Canada Inc. XM name and XM NavTraffic are registered trademarks of Sirius XM Radio Inc. All other trademarks and channel names are property of their respective owners.. \*The Bluetooth word mark and logos are owned by Bluetooth SIG, Inc., and any use of such marks by Nissan is under licence. \*iPod is a registered trademark of Apple, Inc. All rights reserved. iPod not included.



## PAINT AND FABRIC SELECTIONS



Glacier Pearl<sup>1</sup> QX1

	SV	SL
Premium Black Cloth <sup>2</sup>	■	■
Premium Grey Cloth <sup>2</sup>	■	■
Black/Red Leather <sup>2,3</sup>		LN



Ignition Red NAH

	SV	SL
Premium Black Cloth <sup>2</sup>	■	
Premium Black/Red Cloth <sup>2</sup>	■	■
Black/Red Leather <sup>2</sup>		LN



Gun Metallic KAD

	SV	SL
Premium Black Cloth <sup>2</sup>	■	■
Premium Black/Red Cloth <sup>2</sup>	■	■
Black/Red Leather <sup>2,3</sup>		LN



Root Beer Brown KAX

	SV	SL
Premium Black Cloth <sup>2</sup>	■	■
Black/Red Leather <sup>2</sup>		LN



Brilliant Blue B51

	SV	SL
Premium Black Cloth <sup>2</sup>	■	■
Premium Grey Cloth <sup>2</sup>	■	■
Black/Red Leather <sup>2</sup>		LN



Blue Lightning RAQ

	SV	SL
Premium Black Cloth <sup>2</sup>		■
Premium Grey Cloth <sup>2</sup>	■	■
Black/Red Leather <sup>2</sup>		LN



Sapphire Blue Onyx B20

	SV	SL
Premium Black Cloth <sup>2</sup>		■
Premium Black/Red Cloth <sup>2</sup>	■	■
Black/Red Leather <sup>2,3</sup>		LN



Chrome Silver KY0

	SV	SL
Premium Black Cloth <sup>2</sup>	■	■
Black/Red Leather <sup>2,3</sup>		LN



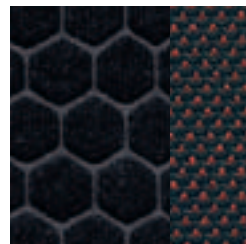
Silver Metallic Centre Console and Door Trim

Red Centre Console and Door Trim

Premium Black Cloth



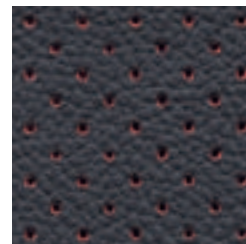
Premium Black/Red Cloth



Premium Grey Cloth



Black/Red Leather



■ Standard

LN Part of Leather Navigation Package

<sup>1</sup>Extra cost option

<sup>2</sup>Available with Silver Metallic Centre Console and Door Trim

<sup>3</sup>Available with Red Centre Console and Door Trim

Nissan has taken care to ensure that the colour swatches presented here are the closest possible representations of actual vehicle colours. Swatches may vary slightly due to the printing process and whether viewed in daylight, fluorescent or incandescent light. Please see your local Nissan Dealership for actual colours and pricing information.

## ACCESSORIZE.

Every Genuine Nissan Accessory is:

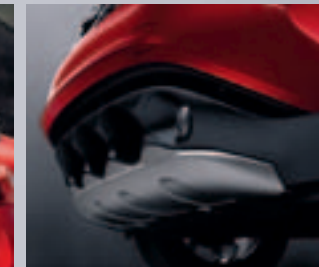
- Custom-fit, custom-designed and durability-tested.
- Backed by Nissan's 3 year/60,000 km Accessories limited warranty.<sup>1</sup>
- Easy to finance with vehicle purchase, for just a few dollars a month.

See your Nissan dealer for details, or go to [accessories.nissan.ca](http://accessories.nissan.ca)

Rear Roof Spoiler



Front Underbody Protector



Illuminated Kick Plates



## COMMITMENT.

Buying and owning a Nissan is like driving one: quick, convenient, confidence-inspiring.



Continue your excitement at [nissan.ca](http://nissan.ca) You'll find virtual product demonstrations, a way to "build your own Nissan," a dealer locator, and more information about key Nissan support and services.



Choose your model

Select colours

Request a quote

**Finance Options** Through Nissan Canada Finance, we offer many attractive purchase and lease programs, all with competitive rates and terms. With our flexible finance options, driving home a new Nissan has never been easier. Consult your local Nissan Dealership for complete details.

**No-Nonsense Warranty** Every 2012 Nissan is covered by a 3 year/60,000 km<sup>5</sup> Comprehensive New Vehicle Warranty, a 5 year/100,000 km<sup>5</sup> Powertrain Warranty, an 8 year/130,000 km<sup>5</sup> Emission Control Warranty on selected components, and a 5 year/unlimited km Corrosion Perforation Warranty. As a Nissan owner, you'll also receive a 3 year Roadside Assistance program available to you 24 hours a day. Terms, conditions and exclusions apply. See Warranty Information Booklet for complete details.

**Added Security Plan (ASP)** For ultimate peace of mind, consider the Nissan Added Security Plan. It's our commitment to be there for you, and to help you leave your worries behind. Different plans, available for both purchased and leased vehicles, let you tailor the coverage to your driving habits.

Nissan's philosophy toward the environment, "Seeking a symbiosis of people, vehicles and nature," describes our ideal for a sustainable mobile society, now and in the future. We launched the Nissan Green Program with specific objectives to realize this goal, and we are pursuing it energetically.



<sup>1</sup>See your Nissan Dealership and read the actual limited warranty. <sup>5</sup>Whichever comes first.





## INNOVATION UNLEASHED. INNOVATION FOR ALL. NISSAN JUKE®

At Nissan, innovation is at the core of everything we do. It's about turning our ideas and dreams into something that makes a difference in your life, every time you get behind the wheel. So imagine driving a JUKE, with all of these available features at your control:

**I-CON.** With JUKE's available Integrated Control (I-CON) system, you dial in Sport, Normal or Eco mode and JUKE obeys, adjusting steering feel, transmission gearing and throttle response.

**Torque Vectoring AWD.** Unlike most systems, JUKE's advanced AWD system adjusts power side-to-side on the rear wheels, giving you grin-inducing grip around turns.

**Turbo power.** JUKE's turbo-charged Direct Injection Gasoline (DIG™) engine gives you the power of a much larger engine while still racking up to 6.1 L/100 km (46 mpg) highway!

**Info-tainment.** Show meets go with a touch-screen navigation system, USB /iPod® interface, Bluetooth®, and Intelligent Key® with Push Button Ignition.<sup>2,3,4,5</sup>



SHIFT\_the way you move

visit [www.nissan.ca](http://www.nissan.ca)

<sup>1</sup>2012 JUKE FWD fuel consumption estimate. Actual mileage may vary with driving conditions – use for comparison only. <sup>2</sup>Factory-installed option. Never program while driving. GPS mapping may not be detailed in all areas or reflect current road regulations. <sup>3</sup>Driving is serious business and requires your full attention. Do not operate any devices connected to the USB or auxiliary audio input jack while driving. <sup>4</sup>Always give your full attention to driving. Avoid operating your iPod® in such a way that you can be distracted during vehicle operation. See dealer for details. iPod is a registered trademark of Apple, Inc. All rights reserved. iPod not included. <sup>5</sup>Availability of specific features is dependent upon the phone's Bluetooth® support. Please refer to your phone Owner's Manual for details. The Bluetooth word mark and logos are owned by Bluetooth SIG, Inc., and any use of such marks by Nissan is under licence.

All illustrations, photographs and specifications in this brochure are based on the latest product information. See actual vehicle for complete accuracy. Nissan Canada Inc. reserves the right to make changes at any time, without notice, in prices, colours, materials, equipment, specifications and models, and to discontinue models or equipment. For information on additional options and accessories, contact your Nissan Dealership. Registered trademarks are property of their respective owners. At [nissan.ca](http://nissan.ca), you'll find virtual product demonstrations, a way to "build your own Nissan," a dealer locator, and more information about key Nissan support services. The Nissan names, logos, product names, feature names, and slogans are trademarks owned by or licenced to Nissan Motor Co. Ltd. and/or its North American subsidiaries. **Always wear your seat belt, and please don't drink and drive.** Printed in November 2011. Catalogue number: 99999-JUK12EN. © 2011 Nissan Canada Inc. All rights reserved.