



SHIFT\_

2013  
**XTERRA**<sup>®</sup>

## Nissan. Innovation that excites.<sup>™</sup> NISSAN XTERRA<sup>®</sup>

Shouldn't you drive something you love? Absolutely. And that's what inspires our innovation. We look at every part of your drive and ask how can we make this better, smarter and more fun. So when you get in your new Xterra,<sup>®</sup> you'll feel how exciting the answers can be:

**Rack it.** Not just a roof rack, an icon. With a clever ventilated gear box, you can dry out wet gear on the roll, while available integrated off-road lights show you the way home.

**Lock it.** Put your gear in lockdown with Xterra's innovative Utili-track<sup>™</sup> cargo-carrying system. With floor rails, heavy-duty sliding cleats, and ten cargo hooks, nothing's getting loose.<sup>1</sup>

**Grade it.** Whether it's steep or deep, with the PRO-4X<sup>®</sup> model you've got serious off-road equipment, including a standard electronic locking rear differential.

**Tame it.** Underneath Xterra's rugged good looks is a solid core featuring a fully boxed, full-length ladder frame. That's full-size strength on a mid-size SUV.

Looking for more? Visit Xterra on Facebook<sup>®</sup> or Twitter<sup>®</sup> to see what owners have to say. Find product demos and more on YouTube.<sup>®</sup>

And follow Nissan Canada on:



SHIFT\_

### visit [nissan.ca](http://nissan.ca)

<sup>1</sup>Cargo and load capacity limited by weight and distribution. Always secure all cargo. Facebook<sup>®</sup> is a registered trademark of Facebook, Inc. Twitter<sup>®</sup> is a registered trademark of Twitter, Inc. YouTube<sup>®</sup> is a registered trademark of Google Inc.

All illustrations, photographs and specifications in this brochure are based on the latest product information. See actual vehicle for complete accuracy. Nissan Canada Inc. reserves the right to make changes at any time, without notice, in prices, colours, materials, equipment, specifications and models, and to discontinue models or equipment. For information on additional options and accessories, contact your Nissan Dealership. Registered trademarks are property of their respective owners.

At [nissan.ca](http://nissan.ca), you'll find virtual product demonstrations, a way to "build your own Nissan," a dealer locator, and more information about key Nissan support services. The Nissan names, logos, product names, feature names, and slogans are trademarks owned by or licenced to Nissan Motor Co. Ltd. and/or its North American subsidiaries. **Always wear your seat belt, and please don't drink and drive.** Printed in December 2012. Catalogue number: 99999-XT13EN. © 2012 Nissan Canada Inc. All rights reserved.



# LIFE. UNPAVED.

## THE FEELING OF INNOVATION.

The fun begins where the pavement ends. And with a potent 261 horsepower and serious off-road capabilities, the unpaved world is yours for the taking. Gear up with a roof rack so radically versatile, it's often imitated, but never equalled. Got mud? You've got a ventilated gear box on the roof and an Easy Clean® cargo area that just wipes down! And, no matter how long the journey, NissanConnect<sup>SM</sup> puts entertainment and navigation right at hand.<sup>2</sup> So where are we heading? 2013 Xterra.<sup>®</sup>

**Nissan. Innovation that excites.<sup>TM</sup>**

**Nissan Xterra PRO-4X<sup>®</sup>** shown in Brilliant Silver.

<sup>1</sup>Cargo and load capacity limited by weight and distribution. Always secure all cargo. Heavy loading of the SUV with cargo, especially on the roof, will affect handling and stability of the vehicle. <sup>2</sup>POIs powered by Google<sup>TM</sup>, Google<sup>TM</sup> Send-to-Car, Real-Time Weather, Real-Time Fuel Prices, and Real-Time Flight Information may require subscription and owner consent to activate. Service[s] provided by independent companies not within Nissan's control. Should service providers terminate/restrict service, service may be suspended or terminated without notice or liability to Nissan and/or its agents. Nissan not responsible for any equipment replacement or upgrades, or associated costs, that may be required for continued operation due to service changes. Certain remote functions require compatible phone, not included with vehicle. Cellular network provided by independent cellular companies not within Nissan's control. Cellular network not available in all areas. Standard text rates, voice minutes, roaming charges and/or data usage may apply.

## THE FEELING NO ONE'S BEEN HERE BEFORE.

No matter how you slice it, Xterra is built to deliver. A potent 4.0-litre DOHC 24-valve V6 gives you the power to climb faster and farther, while advanced friction-reducing technologies keep it all moving smoothly. Continuously Variable Valve Timing delivers heightened efficiency, on-demand power, and lets you tow up to 2268 kg (5000 lbs).<sup>1</sup>

Not only is it packed with advanced technologies ready to conquer the trail, it's also equipped with hardcore 4x4 components. From a fully boxed ladder frame to a locking rear differential, this vehicle goes where few dare follow.

**Locking Rear Differential:** When 4-Wheel Drive just isn't enough, activate the available electronic locking rear differential. This technology delivers equal power to both rear wheels to boost traction and help keep your Xterra moving forward. Helping you reach your destination even in the gnarliest trail conditions.

**Hill Start Assist:** Works on the uphill swing to help prevent rolling backward when you're starting from a stop on an incline. This system applies the brakes for a few moments, allowing you enough time to switch from the brake pedal to the accelerator.

**Hill Descent Control:** What goes up must come down. Xterra's hill descent control automatically adjusts your speed and brake pressure to help keep you going at a controlled speed, freeing you up to concentrate on navigating difficult off-road situations.

**Shift-on-the-Fly.** Go where the wind – or whim – takes you, with a twist of a dial. The highly capable Xterra 4WD system features shift-on-the-fly 4-Wheel Drive with a 2-speed transfer case, so you can go from 2WD to 4H at speeds up to 100 km/h (62 mph).



**261** HP    **281** LB-FT  
OF TORQUE

<sup>1</sup>See Nissan Towing Guide and Owner's Manual for proper use. <sup>2</sup>PRO-4X models only. <sup>3</sup>PRO-4X models with automatic transmission only. Cargo and load capacity limited by weight and distribution. Always secure all cargo. Heavy loading of the SUV with cargo, especially on the roof, will affect handling and stability of the vehicle.

Nissan Xterra PRO-4X<sup>™</sup> shown in Super Black.



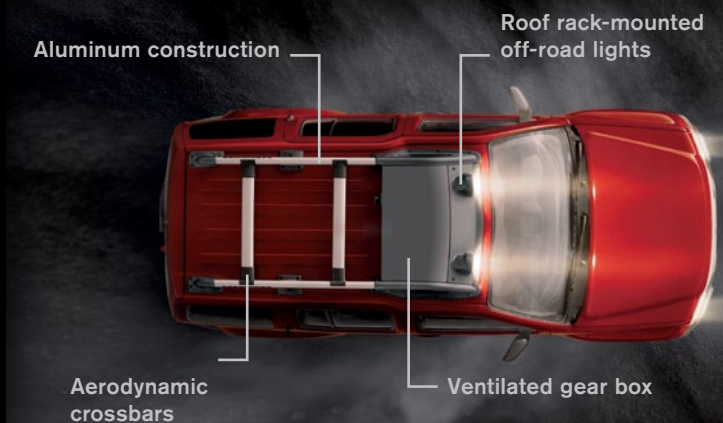
## FIT TO BE TIED.

Bring what you will, Xterra adapts. Latch it down with multiple hooks, or use the innovative Utili-track™ cargo channel system to easily secure your gear. Clean up quick with the Easy Clean® cargo area. Stash more goods in the hidden storage space. This is the definition of versatility!

Nissan Xterra PRO-4X® shown in Graphite/Steel Cloth.



**Radically versatile in every way.** A roof rack starting with 6063-grade aluminum construction and up to 150-lb. capacity. The gear box is ventilated for wet, dirty stuff, and removable to make way for larger items. Aerodynamic crossbars open up all kinds of possibilities. On PRO-4X®, off-road lights mounted right on the rack! cast a mighty beam every step of the way.



Hidden under-floor storage

**Bring what you need.** Whatever it is, Xterra is ready to make it fit. A 60/40 split rear seat and fold-flat front seat give you plenty of options, while a first aid kit (standard on Xterra PRO-4X®) is nestled in its own nook in the back hatch, just in case. Be ready to accommodate anything, and never ditch a friend for a longboard again!

**Secure your gear with ease.** The Utili-track™ cargo channel system slides and locks into any position, giving you the means to accommodate just about any activity you can think of. Load it, lock it, start your adventure. Oversize hooks in the ceiling make securing your gear a cinch. Strap it down and get out there!

\*Cargo and load capacity limited by weight and distribution. Always secure all cargo. Heavy loading of the SUV with cargo, especially on the roof, will affect the handling and stability of the vehicle.





Nissan Xterra PRO-4X\* shown in Graphite/Steel Cloth with optional package equipment. U.S. instrumentation shown.

NISSANCONNECT<sup>SM</sup>

WITH NAVIGATION<sup>1</sup>

# YOUR MUSIC YOUR WORLD

## ANY WAY YOU WANT IT.

Why settle for just the radio? By putting the latest technologies right at your fingertips, Xterra gives you all you need for hours of endless entertainment. Rock on.<sup>4</sup>

**Streaming audio via Bluetooth.<sup>6</sup>** Want to let your passengers play DJ? With this available feature, just connect a Bluetooth<sup>®</sup>-enabled audio device to stream music wirelessly, from any seat in the cabin.<sup>1</sup>

**iPod<sup>®</sup>/USB input.** Wouldn't you like to be able to listen to your own playlists or podcasts? With the available iPod<sup>®</sup>/USB input, you can. Plug in your iPod<sup>®</sup> or other portable MP3 player through the USB port and control it through Xterra's audio controls.<sup>5</sup>

## ALWAYS UP TO DATE.

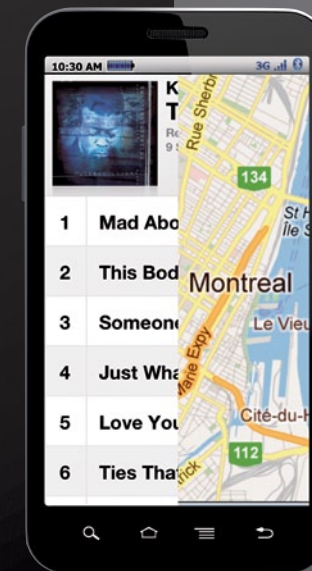
Navigate your way through the concrete canyons, call up some friends, or use Google<sup>™</sup> services to find that new restaurant with NissanConnect<sup>SM</sup> with navigation as your guide.<sup>3,4</sup>

**Nissan Navigation System.** Xterra's available 147 mm (5.8") touch-screen display offers NavTraffic for real-time advisories to keep you on the move. Plus over five million points of interest, so you'll always have something new to discover.<sup>3,6</sup>

**Points of Interest powered by Google.<sup>™</sup>** Find that new restaurant in a snap. Based on the latest information, Google<sup>™</sup> Points of Interest lets you search for a location, even without knowing the name or category. Once you find it, select it and you're on your way.<sup>4</sup>

**Google<sup>™</sup> Send-To-Car.** Send an address to your Nissan Navigation System from any computer. When you start the car and connect to the network, the directions will be delivered and loaded into your navigation system. How cool is that?<sup>4</sup>

**Hands-free text messaging assistant.** Now you can receive and respond to text messages without ever touching your phone. With a press of a button, have your text messages read to you and answer with pre-loaded responses, all via voice recognition.<sup>7</sup>



## DESIGNED FOR ROCKING OUT, CHECKING IN, EVEN BACKING UP.

Pump up your experience and keep up connections. With a standard Bluetooth<sup>®</sup> Hands-Free Phone System<sup>1</sup> and available features like a booming Rockford Fosgate sound system, Xterra has the technology to keep you rocking and talking no matter where the trail takes you. And with the new available RearView Monitor, hooking up the boat, the dirt bikes – or just nabbing that parking space in town – has never been easier.<sup>2,3</sup>



**RearView Monitor.** Whether negotiating a tight parking space or lining up to attach a trailer, Xterra's new RearView Monitor – included with the available Nissan Navigation Package – is like having an extra pair of eyes where you need them most.<sup>2,3</sup>



Designed exclusively for the Xterra's interior, the available Rockford Fosgate audio system features nine speakers and an enclosed subwoofer for massive sound.



Go far off the beaten path, but stay in touch just by pushing a button on the steering wheel. It's voice-activated, and lets you program in up to 40 numbers with easy access.<sup>1</sup>

<sup>1</sup>Availability of specific features is dependent upon the phone's Bluetooth<sup>®</sup> support. Please refer to your phone Owner's Manual for details. The Bluetooth word mark and logos are owned by Bluetooth SIG, Inc., and any use of such marks by Nissan is under licence. <sup>2</sup>Parking aid/convenience feature. Cannot completely eliminate blind spots or warn of moving objects. May not detect every object. Always check surroundings before moving vehicle. Not a substitute for proper backing procedures. Always turn to check what is behind you before backing up. <sup>3</sup>Factory-installed option. Never program while driving. GPS mapping may not be detailed in all areas or reflect current road regulations. <sup>4</sup>POIs powered by Google<sup>™</sup>. <sup>5</sup>Google<sup>™</sup> Send-to-Car, Real-Time Weather, Real-Time Fuel Prices, and Real-Time Flight Information may require subscription and owner consent to activate. Service(s) provided by independent companies not within Nissan's control. Should service providers terminate/restrict service, service may be suspended or terminated without notice or liability to Nissan and/or its agents. Nissan not responsible for any equipment replacement or upgrades, or associated costs, that may be required for continued operation due to service changes. Certain remote functions require compatible phone, not included with vehicle. Cellular network provided by independent cellular companies not within Nissan's control. Cellular network not available in all areas. Standard text rates, voice minutes, roaming charges and/or data usage may apply. <sup>6</sup>Driving is serious business and requires your full attention. Do not operate any devices connected to the USB or auxiliary audio input jack while driving. <sup>7</sup>NavTraffic<sup>®</sup> is available in select North American markets. In Canada, at time of printing, incident and flow data is available for 7 metropolitan areas of Canada (Vancouver, Calgary, Edmonton, Toronto, Ottawa, Montreal and Quebec City). Limited flow data is available for Toronto. Subscription sold separately after trial period. Subscriptions subject to customer agreement at siriusxm.ca. Fees and programming subject to change. © 2012 Sirius XM Canada Inc. XM name and NavTraffic are registered trademarks of Sirius XM Radio Inc. All other trademarks and channel names are property of their respective owners. <sup>8</sup>Use the text messaging feature after stopping your vehicle in a safe location. If you have to use the feature while driving, exercise extreme caution at all times so full attention may be given to vehicle operation. Google<sup>®</sup> is a registered trademark of Google Inc. iPod<sup>®</sup> is a registered trademark of Apple, Inc. All rights reserved. iPod not included.



## AVOID BEING BETWEEN A ROCK AND A HARD PLACE.

Nissan looks at safety from all perspectives. That's why Xterra is not only agile and responsive in its handling, our innovative advanced technology helps anticipate trouble before you do. And, its incredibly strong structure and Zone Body construction, plus an advanced airbag system, combine to help protect you no matter what.

**Vehicle Dynamic Control (VDC)** helps you stay on your steered path. If your vehicle begins to oversteer (fishtail) or understeer (plow forward), VDC (sometimes known as Stability Control) compensates by reducing engine power and/or applying appropriate brake pressure to specific wheels.<sup>1</sup>

**Anti-lock Braking System (ABS)** rapidly pumps the brakes during hard braking to help prevent your wheels from locking, helping you maintain steering control.

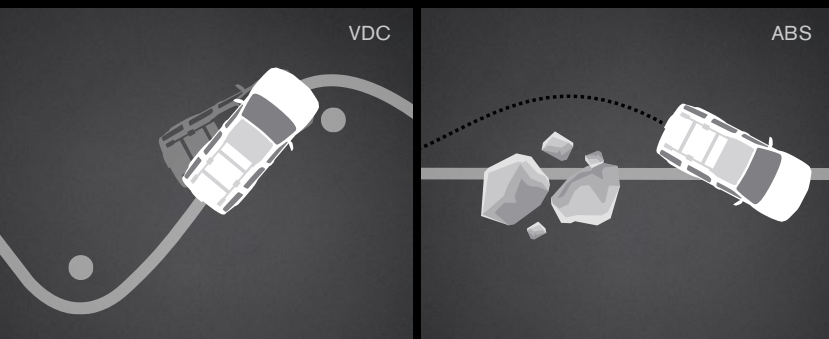
**Brake Override Technology.** Like every Nissan since 2005, Xterra comes standard with Brake Override Technology. It's designed to help slow down your vehicle and bring it to a safe stop in an emergency by overriding accelerator input and reducing engine power when the accelerator and brake pedals are applied simultaneously.

**Ready with a rollover sensor.** In the unlikely event of a rollover, Xterra is poised to respond. All models have a sensor that detects an impending rollover and deploys both curtain airbags.<sup>2</sup>

**Zone Body construction** helps absorb crash energy to protect the occupant compartment if the unavoidable happens. It includes front and rear crumple zones, energy-absorbing frame side-members and crossmembers, a reinforced body structure and bumper heights designed for compatibility with other vehicles. All to help lessen the effects of an impact and protect your family.

**Airbag Technology.**<sup>2</sup> Nissan's Advanced Airbag System (AABS) includes standard dual-stage supplemental front airbags that incorporate seat belt sensors and an occupant-classification sensor. The inflation rate of these dual-stage airbags adjusts depending on crash severity and seat belt usage. If the front passenger seat is empty, a sensor will deactivate the bag. In addition, front seat-mounted side-impact supplemental airbags are built into the seats, so they move with you as you adjust your seating position.<sup>2</sup> Up above are standard roof-mounted curtain supplemental airbags, offering enhanced head protection for both rows of outboard occupants.<sup>2</sup>

**snug-kids™** Nissan safety engineers have dedicated thousands of hours to evaluating hundreds of child restraints in Nissan vehicles. The result: An industry first, The Snug Kids Child Safety Seat Fit Guide. This guide lists child seats that fit the rear seats of Nissan vehicles, as well as offers invaluable tips on correct installation. Look for the latest Fit Guide at [Nissan.ca/SnugKids](http://Nissan.ca/SnugKids)



## GET THE XTERRA® YOU WANT. HOW YOU WANT IT.

TRIM BUILD

### CHOOSE FROM THESE TRIM LEVELS

**S**

- 261 HP 4.0-litre DOHC 24-valve V6
- 4-Wheel Drive System
- 16" Aluminum-alloy wheels
- Tubular step rails
- Tubular roof rack with covered gear box, crossbars and air dam
- AM/FM/CD audio system with 109 mm (4.3") colour display
- Bluetooth® Hands-Free Phone System
- SiriusXM Satellite Radio
- USB connection port for iPod® interface and other compatible devices
- Cruise control
- Power door locks and windows
- Remote keyless entry
- Easy Clean® cargo area with Utili-track™ Cargo Channel System
- Vehicle Dynamic Control (VDC)<sup>1</sup>
- Active Brake Limited Slip (ABLS)
- 4-wheel Anti-lock Braking System (ABS) with G-sensor
- Six standard airbags<sup>2</sup>



### PRO-4X INCLUDES S EQUIPMENT PLUS:<sup>3</sup>

- Automatic on/off headlights
- Roof rack-mounted off-road lights
- Fog lights
- Blisten® off-road performance shocks
- Skid plates (oil pan, fuel tank and transfer case)
- 16" Machined-finished aluminum-alloy wheels
- P265/75R16 BFGoodrich® Rugged Trail T/A® OWL tires
- Electronic locking rear differential
- Hill descent control and hill start assist<sup>4</sup>
- Clutch start/cancel<sup>5</sup>
- Rockford Fosgate-powered audio system
- Nine high-performance speakers, including 8" subwoofer
- Illuminated steering wheel-mounted audio controls
- White-faced gauges
- PRO-4X embroidered cloth seat trim
- Fold-flat front passenger's seat



<sup>1</sup>VDC, which should remain on when driving except when freeing the vehicle from mud or snow, cannot prevent accidents due to abrupt steering, carelessness, or dangerous driving techniques. Always drive safely.  
<sup>2</sup>Airbags are only a supplemental restraint system; always wear your seat belt. Even with the occupant-classification sensor, rear-facing child restraints should not be placed in the front-passenger's seat. Also, in addition to any other requirement of applicable law, all children 12 and under should ride in the rear seat properly secured in child restraints, booster seats, or seat belts according to their size. Airbags will only inflate in certain accidents; see your Owner's Manual for more details. Inflated airbags shown for illustration purposes only, actual coverage area may differ. Airbags deflate after deployment. <sup>3</sup>Excludes tubular step rails. <sup>4</sup>Automatic transmission models only. <sup>5</sup>Manual transmission models only. BF Goodrich® is a registered trademark of Goodrich Corporation. Bilstein® is a registered trademark of ThyssenKrupp Bilstein GmbH. Bluetooth® is a registered trademark of Bluetooth SIG, Inc. and any use of such marks by Nissan is under license. Long Trail T/A® and Rugged Trail T/A® are registered trademarks of Uniroyal Goodrich Licensing Services, Inc.

## FEATURES AND SPECIFICATIONS

Engine	S	PRO-4X
VQ40DE – 4.0-litre DOHC 24-valve V6 engine	<input type="checkbox"/>	<input type="checkbox"/>
Horsepower – 261 HP @ 5600 rpm		
Torque – 281 lb-ft @ 4000 rpm		
Emissions – LEV2 ULEV	<input type="checkbox"/>	<input type="checkbox"/>
Continuously Variable Valve Timing Control System (CVTCS)	<input type="checkbox"/>	<input type="checkbox"/>
Variable Intake System	<input type="checkbox"/>	<input type="checkbox"/>
Nissan Direct Ignition System with platinum-tipped spark plugs	<input type="checkbox"/>	<input type="checkbox"/>
Electronic drive-by-wire throttle	<input type="checkbox"/>	<input type="checkbox"/>
Engine block heater	<input type="checkbox"/>	<input type="checkbox"/>

Drivetrain		
6-speed close-ratio manual transmission	<input type="checkbox"/>	<input type="checkbox"/>
5-speed automatic transmission	<input type="checkbox"/>	<input type="checkbox"/> <b>AT</b>
4-Wheel Drive system with switch-operated 2-speed transfer case	<input type="checkbox"/>	<input type="checkbox"/>
3.357:1 final drive ratio		<input type="checkbox"/> <b>AT</b>
Hill descent control and hill start assist (automatic transmission only)		<input type="checkbox"/> <b>AT</b>
Electronic locking rear differential		<input type="checkbox"/>
Transmission cooler (automatic transmission only)	<input type="checkbox"/>	<input type="checkbox"/> <b>AT</b>

Brakes		
4-wheel vented disc brakes	<input type="checkbox"/>	<input type="checkbox"/>
4-wheel Anti-lock Braking System (ABS) with G-sensor	<input type="checkbox"/>	<input type="checkbox"/>
Electronic Brake force Distribution (EBD)	<input type="checkbox"/>	<input type="checkbox"/>

Suspension/Steering		
Independent double-wishbone front suspension	<input type="checkbox"/>	<input type="checkbox"/>
Multi-leaf rear suspension with solid axle	<input type="checkbox"/>	<input type="checkbox"/>
Bilstein® off-road performance shock absorbers	<input type="checkbox"/>	<input type="checkbox"/>
Front and rear stabilizer bars	<input type="checkbox"/>	<input type="checkbox"/>
Engine-speed-sensitive power-assisted rack-and-pinion steering	<input type="checkbox"/>	<input type="checkbox"/>

Wheels/Tires		
16" x 7" 5-spoke aluminum-alloy wheels	<input type="checkbox"/>	<input type="checkbox"/>
16" x 7" 6-spoke machined-finished aluminum-alloy wheels	<input type="checkbox"/>	<input type="checkbox"/>
P265/70R16 BFGoodrich® Long Trail T/A® OWL tires	<input type="checkbox"/>	<input type="checkbox"/>
P265/75R16 BFGoodrich® Rugged Trail T/A® OWL tires	<input type="checkbox"/>	<input type="checkbox"/>
Full-size spare tire	<input type="checkbox"/>	<input type="checkbox"/>

Exterior Features		
Automatic on/off headlights	<input type="checkbox"/>	<input type="checkbox"/>
Tubular roof rack with covered gear box, crossbars and air dam	<input type="checkbox"/>	<input type="checkbox"/>
Roof-rack-mounted off-road lights	<input type="checkbox"/>	<input type="checkbox"/>
Tubular step rails	<input type="checkbox"/>	<input type="checkbox"/>
Skid plates – oil pan, fuel tank, transfer case	<input type="checkbox"/>	<input type="checkbox"/>
Rear bumper steps	<input type="checkbox"/>	<input type="checkbox"/>
Front tow hook	<input type="checkbox"/>	<input type="checkbox"/>
Black side mouldings	<input type="checkbox"/>	<input type="checkbox"/>
Black outside mirrors and door handles	<input type="checkbox"/>	<input type="checkbox"/>
Fog lights	<input type="checkbox"/>	<input type="checkbox"/>
Sandblast aluminum front grille and lower front bumper	<input type="checkbox"/>	<input type="checkbox"/>
Dual power heated outside mirrors	<input type="checkbox"/>	<input type="checkbox"/>
UV-reducing solar glass	<input type="checkbox"/>	<input type="checkbox"/>
Rear privacy glass	<input type="checkbox"/>	<input type="checkbox"/>

Comfort/Conveniences	S	PRO-4X
NissanConnect <sup>SM</sup> with Navigation, including 147 mm (5.8") colour touch-screen monitor		<input type="checkbox"/> <b>N</b>
Nissan Voice Recognition for audio and navigation		<input type="checkbox"/> <b>N</b>
RearView Monitor		<input type="checkbox"/> <b>N</b>
NavTraffic <sup>1</sup>		<input type="checkbox"/> <b>N</b>
POIs powered by Google™ and Google™ Send-To-Car		<input type="checkbox"/> <b>N</b>
Hands-free text messaging assistant		<input type="checkbox"/> <b>N</b>
Bluetooth® Hands-Free Phone System	<input type="checkbox"/>	<input type="checkbox"/>
Auto-dimming rearview mirror with compass and outside temperature display	<input type="checkbox"/>	<input type="checkbox"/>
Air conditioning	<input type="checkbox"/>	<input type="checkbox"/>
Voltage and oil pressure gauges	<input type="checkbox"/>	<input type="checkbox"/>
Power windows with driver's one-touch auto-down feature	<input type="checkbox"/>	<input type="checkbox"/>
Power door locks with auto-locking feature	<input type="checkbox"/>	<input type="checkbox"/>
Remote keyless entry	<input type="checkbox"/>	<input type="checkbox"/>
Cruise control	<input type="checkbox"/>	<input type="checkbox"/>
Retained accessory power and battery saver	<input type="checkbox"/>	<input type="checkbox"/>
Overhead sunglasses storage	<input type="checkbox"/>	<input type="checkbox"/>
Tilt steering column	<input type="checkbox"/>	<input type="checkbox"/>
Variable intermittent windshield wipers and rear wiper	<input type="checkbox"/>	<input type="checkbox"/>
Front map lights	<input type="checkbox"/>	<input type="checkbox"/>
Sun visors with vanity mirrors and extension	<input type="checkbox"/>	<input type="checkbox"/>
Digital clock (in radio)	<input type="checkbox"/>	<input type="checkbox"/>
Three 12-volt DC power outlets (2 "live")	<input type="checkbox"/>	<input type="checkbox"/>
Four cup holders and two bottle holders	<input type="checkbox"/>	<input type="checkbox"/>
Luggage side nets	<input type="checkbox"/>	<input type="checkbox"/>
Cargo net	<input type="checkbox"/>	<input type="checkbox"/>
Under-floor cargo area storage	<input type="checkbox"/>	<input type="checkbox"/>
Utili-track™ Cargo Channel System with four adjustable cleats	<input type="checkbox"/>	<input type="checkbox"/>
Four ceiling hooks and two cargo-area side hooks	<input type="checkbox"/>	<input type="checkbox"/>
First aid kit	<input type="checkbox"/>	<input type="checkbox"/>

Seating/Appointments		
Cloth seating surfaces	<input type="checkbox"/>	<input type="checkbox"/>
PRO-4X® embroidered cloth seat trim	<input type="checkbox"/>	<input type="checkbox"/>
8-way manual adjustable driver's seat with adjustable lumbar support	<input type="checkbox"/>	<input type="checkbox"/>
Fold-flat front passenger's seat	<input type="checkbox"/>	<input type="checkbox"/>
Driver's seatback pocket	<input type="checkbox"/>	<input type="checkbox"/>
60/40 Split fold-flat rear seats	<input type="checkbox"/>	<input type="checkbox"/>
Leather-wrapped steering wheel with white contrast stitching	<input type="checkbox"/>	<input type="checkbox"/>
Leather-wrapped shift knob with white contrast stitching	<input type="checkbox"/>	<input type="checkbox"/>
White-faced gauges	<input type="checkbox"/>	<input type="checkbox"/>
Easy Clean® cargo area	<input type="checkbox"/>	<input type="checkbox"/>
PRO-4X® embroidered carpeted floor mats	<input type="checkbox"/>	<input type="checkbox"/>

Audio/Entertainment	S	PRO-4X
AM/FM/CD audio system with 109 mm (4.3") colour display	<input type="checkbox"/>	<input type="checkbox"/>
Six speakers	<input type="checkbox"/>	<input type="checkbox"/>
380-watt Rockford Fosgate-powered audio system		<input type="checkbox"/>
Nine high-performance speakers, including 8" subwoofer		<input type="checkbox"/>
Illuminated steering wheel-mounted audio controls		<input type="checkbox"/>
MP3 and WMA audio playback capabilities	<input type="checkbox"/>	<input type="checkbox"/>
USB connection port for iPod® interface and other compatible devices	<input type="checkbox"/>	<input type="checkbox"/>
Auxiliary audio input jack	<input type="checkbox"/>	<input type="checkbox"/>
Speed-sensitive volume control	<input type="checkbox"/>	<input type="checkbox"/>
SiriusXM Satellite Radio <sup>2</sup>	<input type="checkbox"/>	<input type="checkbox"/>
Streaming audio via Bluetooth® wireless technology		<input type="checkbox"/> <b>N</b>

Safety/Security		
Nissan Advanced Airbag System (AABS) with dual-stage supplemental front airbags with seat belt and occupant-classification sensors	<input type="checkbox"/>	<input type="checkbox"/>
Driver and front passenger seat-mounted side-impact supplemental airbags	<input type="checkbox"/>	<input type="checkbox"/>
Roof-mounted curtain supplemental side-impact airbags for outboard occupants side-impact protection with rollover sensor	<input type="checkbox"/>	<input type="checkbox"/>
Vehicle Dynamic Control (VDC) with Traction Control System (TCS)	<input type="checkbox"/>	<input type="checkbox"/>
Active Brake Limited Slip (ABLS)	<input type="checkbox"/>	<input type="checkbox"/>
3-point ALR/ELR passenger seat belt system (ELR for driver)	<input type="checkbox"/>	<input type="checkbox"/>
Front-seat Active Head Restraints	<input type="checkbox"/>	<input type="checkbox"/>
Front seat belts with pre-tensioners and load limiters	<input type="checkbox"/>	<input type="checkbox"/>
LATCH System (Lower Anchors and Tethers for CHildren)	<input type="checkbox"/>	<input type="checkbox"/>
Energy-absorbing steering column	<input type="checkbox"/>	<input type="checkbox"/>
Zone Body construction with front and rear crumple zones	<input type="checkbox"/>	<input type="checkbox"/>
Hood-buckling creases	<input type="checkbox"/>	<input type="checkbox"/>
Pipe-style steel side-door guard beams	<input type="checkbox"/>	<input type="checkbox"/>
Tire Pressure Monitoring System (TPMS)	<input type="checkbox"/>	<input type="checkbox"/>
Immobilizer Key System	<input type="checkbox"/>	<input type="checkbox"/>
Anti-theft system	<input type="checkbox"/>	<input type="checkbox"/>

## PACKAGES

<b><input type="checkbox"/> Navi Package</b>
NissanConnect <sup>SM</sup> with Navigation including 147 mm (5.8") colour touch-screen monitor
Nissan Voice Recognition for audio and navigation
RearView Monitor
NavTraffic <sup>1</sup>
POIs powered by Google™ and Google™ Send-To-Car
Hands-free text messaging assistant
Streaming audio via Bluetooth® wireless technology

<b><input type="checkbox"/> PRO-4X® Automatic Transmission Package</b>
5-speed automatic transmission
3.357:1 final drive ratio
Transmission cooler
Hill descent control
Hill start assist

## DIMENSIONS/CAPACITIES/WEIGHTS/FUEL

Dimensions – mm (inches)		
<b>Exterior</b>		
Wheelbase	2700 (106.3)	
Overall length	4539 (178.7)	
Overall width	1849 (72.8)	
Overall height (with roof rack)	1902 (74.9)	
Track width	1570 (61.8)	

Vehicle clearance	S	PRO-4X
Ground clearance	231 mm (9.1")	241 mm (9.5")
Angle of approach	32.0°	33.2°
Angle of departure	28.8°	29.4°
Break-over angle	24.6°	23.8°

Interior (front/rear)		
Head room	1013/998 (39.9/39.3)	
Leg room	1077/874 (42.4/34.4)	
Hip room	1420/1171 (55.9/46.1)	
Shoulder room	1481/1481 (58.3/58.3)	

Capacities		
Seating capacity	5	
Interior passenger volume – L (cu. ft.)	2832 (100)	
Cargo capacity – L (cu. ft.)		
All seats in user positions	991 (35)	
Second row folded flat	1869 (66)	
Fuel tank – L (Imp gal.)	80 (17.6)	
Towing capacity <sup>3</sup> – kg (lbs)	2268 (5000)	

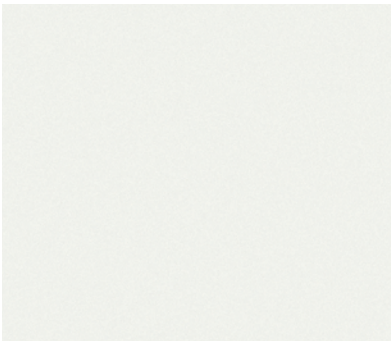
Base Curb Weights – kg (lbs)		
	<b>S</b>	<b>PRO-4X</b>
Manual transmission	1981 (4367)	2002 (4414)
Automatic transmission	1983 (4382)	2011 (4434)

2013 Fuel Consumption Estimates		
<b>City/Hwy L/100 km (MPG)</b>		
Automatic transmission	14.3/9.9 (20.0/29.0)	
Manual transmission	13.6/10.2 (21.0/28.0)	
Actual mileage may vary with driving conditions – use for comparison only.		

<input type="checkbox"/> Standard
<input type="checkbox"/> Optional
<input type="checkbox"/> <b>N</b> Part of Navi Package
<input type="checkbox"/> <b>AT</b> Part of PRO-4X® Automatic Transmission Package

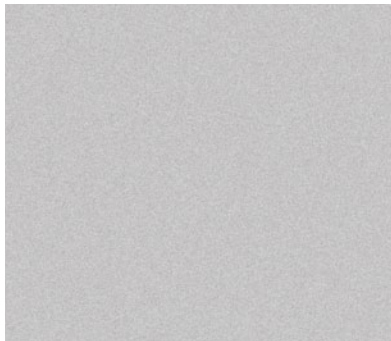
<sup>1</sup>NavTraffic® is available in select North American markets. In Canada, at time of printing, incident and flow data is available for 7 metropolitan areas of Canada (Vancouver, Calgary, Edmonton, Toronto, Ottawa, Montreal and Quebec City). Limited flow data is available for Toronto. Subscription sold separately after trial period. Subscriptions subject to customer agreement at siriusxm.ca. Fees and programming subject to change. © 2012 Sirius XM Canada Inc. XM name and NavTraffic are registered trademarks of Sirius XM Radio Inc. All other trademarks and channel names are property of their respective owners. <sup>2</sup>XM® Satellite Radio is available in the 10 Canadian provinces and the 48 contiguous United States. Basic monthly subscription required and sold separately after trial period. Subscription subject to customer agreement at siriusxm.ca. All fees and programming subject to change. © 2012 Sirius XM Canada Inc. The Sirius and XM names and all related marks and logos are trademarks of Sirius XM Radio Inc. All other trademarks are the property of their respective owners. <sup>3</sup>Trailer brakes recommended for towing over 454 kg (1000 lbs). Weight-distribution hitch should be used for towing over 907 kg (2000 lbs). Please see your Owner's Manual for complete details. <sup>4</sup>BFGoodrich is a registered trademark of Goodrich Corporation. <sup>5</sup>Long Trail T/A and Rugged Trail T/A are registered trademarks of Uniroyal Goodrich Licensing Services, Inc. <sup>6</sup>Bilstein is a registered trademark of ThyssenKrupp Bilstein GmbH. The Bluetooth word mark and logos are owned by Bluetooth SIG, Inc., and any use of such marks by Nissan is under licence.

PAINT SELECTIONS



Glacier White QAK S PRO-4X

STEEL CLOTH	<input type="checkbox"/>	<input type="checkbox"/>
GRAPHITE/STEEL CLOTH	<input type="checkbox"/>	<input type="checkbox"/>



Brilliant Silver<sup>1</sup> K23 S PRO-4X

STEEL CLOTH	<input type="checkbox"/>	<input type="checkbox"/>
GRAPHITE/STEEL CLOTH	<input type="checkbox"/>	<input type="checkbox"/>



Lava Red<sup>1</sup> EAF S PRO-4X

STEEL CLOTH	<input type="checkbox"/>	<input type="checkbox"/>
GRAPHITE/STEEL CLOTH	<input type="checkbox"/>	<input type="checkbox"/>



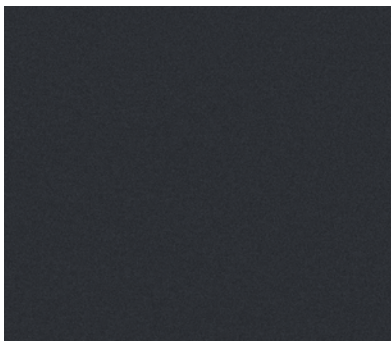
Cayenne Red<sup>1</sup> NAH S PRO-4X

STEEL CLOTH	<input type="checkbox"/>	<input type="checkbox"/>
GRAPHITE/STEEL CLOTH	<input type="checkbox"/>	<input type="checkbox"/>



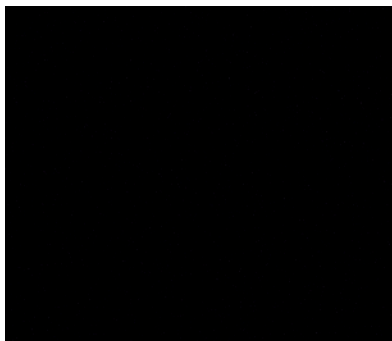
Metallic Blue<sup>1</sup> B17 S PRO-4X

STEEL CLOTH	<input type="checkbox"/>	<input type="checkbox"/>
GRAPHITE/STEEL CLOTH	<input type="checkbox"/>	<input type="checkbox"/>



Night Armour<sup>1</sup> K26 S PRO-4X

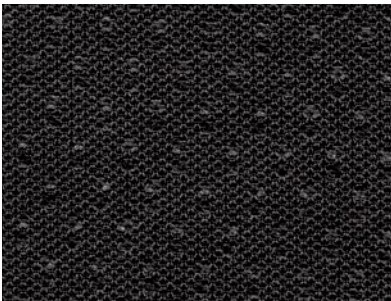
STEEL CLOTH	<input type="checkbox"/>	<input type="checkbox"/>
GRAPHITE/STEEL CLOTH	<input type="checkbox"/>	<input type="checkbox"/>



Super Black KH3 S PRO-4X

STEEL CLOTH	<input type="checkbox"/>	<input type="checkbox"/>
GRAPHITE/STEEL CLOTH	<input type="checkbox"/>	<input type="checkbox"/>

FABRIC SELECTIONS



S Steel Cloth



PRO-4X Graphite/Steel Cloth

Standard  
 Extra cost option

Nissan has taken care to ensure that the colour swatches presented here are the closest possible representations of actual vehicle colours. Swatches may vary slightly due to the printing process and whether viewed in daylight, fluorescent or incandescent light. Please see your local Nissan Dealership for actual colours and pricing information.

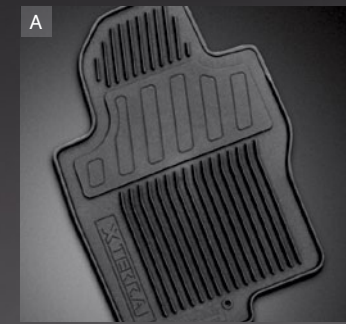
ACCESSORIES

**GENUINE NISSAN ACCESSORIES. IMPRESS. CONNECT. PROTECT. ORGANIZE.**

Every Genuine Nissan Accessory is: custom-fit, custom-designed and durability-tested; backed by Nissan's 3-year/60,000 km Accessories limited warranty; and can be financed when installed by dealer at time of purchase.<sup>2</sup>

- A. All-season Rubber Floor Mats**  
You've seen the bottom of your shoes.
- B. Hatch Tent**  
It's your Xterra! It's your campsite! It's both!
- C. Fog Lights**  
Cut like a knife through pea soup.
- D. Side-window Deflectors**  
Fresh air without getting smacked upside the head.
- E. Hood Protector**  
Keeps bugs and dirt from driving you buggy.
- F. Body Side Mouldings**  
Scratches? What scratches?

See your Nissan dealer for details, or go to [accessories.nissan.ca](http://accessories.nissan.ca)



COMMITMENT

Buying and owning a Nissan is like driving one: quick, convenient, confidence-inspiring.



**Finance Options** Through Nissan Canada Finance, we offer many attractive purchase and lease programs, all with competitive rates and terms. With our flexible finance options, driving home a new Nissan has never been easier. Consult your local Nissan Dealership for complete details.

**No-Nonsense Warranty** Every 2013 Nissan is covered by a 3 year/60,000 km<sup>3</sup> Comprehensive New Vehicle Warranty, a 5 year/100,000 km<sup>3</sup> Powertrain Warranty, an 8 year/130,000 km<sup>3</sup> Emission Control Warranty on selected components, and a 5 year/unlimited km Corrosion Perforation Warranty. As a Nissan owner, you'll also receive a 3 year Roadside Assistance program available to you 24 hours a day. Terms, conditions and exclusions apply. See Warranty Information Booklet for complete details.

**Added Security Plan (ASP)** For ultimate peace of mind, consider the Nissan Added Security Plan. It's our commitment to be there for you, and to help you leave your worries behind. Different plans, available for both purchased and leased vehicles, let you tailor the coverage to your driving habits.

Nissan's philosophy toward the environment, "Seeking a symbiosis of people, vehicles and nature," describes our ideal for a sustainable mobile society, now and in the future. We launched the Nissan Green Program with specific objectives to realize this goal, and we are pursuing it energetically.



<sup>2</sup>See your Nissan Dealership and read the actual limited warranty. <sup>3</sup>Whichever comes first.