



SHIFT_

2013
QUEST®

Nissan. Innovation that excites.™

NISSAN QUEST®

Shouldn't you drive something you love? Absolutely. And that's what inspires our innovation. We look at every part of your drive and ask how can we make this better, smarter and more fun. So when you get in your new Quest, you'll feel how exciting the answers can be:

A revolution in seating. Quest's 2nd-row seats fold flat – no removal required. And the 3rd row folds forward, for a permanent cargo well behind the 3rd row – no other minivan does that.

Blind Spot Warning System. An extra pair of eyes never hurts. Quest's available system warns you when another vehicle's in the blind spot area on either side.¹

Easy-Fill Tire Alert. No guesswork involved. Just fill the tire with air until a friendly beep of the horn signals you've reached the correct pressure.²

One-touch power sliding doors. Hands full? Quest's available one-touch power sliding doors open easily with the touch of a finger.

Looking for more? Visit Quest on Facebook® or Twitter® to see what owners have to say. Find product demos and more on YouTube®.

And follow Nissan on:



SHIFT_

visit nissan.ca

¹The Blind Spot Warning System is not a substitute for proper lane change procedures. The system will not prevent contact with other vehicles or accidents. It may not detect every vehicle or object around you. ²Vehicle must be on for Easy-Fill Tire Alert to operate. Facebook® is a registered trademark of Facebook, Inc. Twitter® is a registered trademark of Twitter, Inc. YouTube® is a registered trademark of Google Inc.

All illustrations, photographs and specifications in this brochure are based on the latest product information. See actual vehicle for complete accuracy. Nissan Canada Inc. reserves the right to make changes at any time, without notice, in prices, colours, materials, equipment, specifications and models, and to discontinue models or equipment. For information on additional options and accessories, contact your Nissan Dealership. Registered trademarks are property of their respective owners.

At nissan.ca, you'll find virtual product demonstrations, a way to "build your own Nissan," a dealer locator, and more information about key Nissan support services. The Nissan names, logos, product names, feature names, and slogans are trademarks owned by or licenced to Nissan Motor Co. Ltd. and/or its North American subsidiaries. **Always wear your seat belt, and please don't drink and drive.** Printed in August 2012. Catalogue number: 99999-QST13EN. © 2012 Nissan Canada Inc. All rights reserved.

LIVE IN THE MOMENT.

THE FEELING OF INNOVATION.

Today will be different. You've got Quest® on your side. When life comes calling, rely on the modern 7-seater with style. Daily routine or family road-trip, celebrate it all – with accommodations that are nothing but first-class. Say yes to a roof made of sky, sliding doors that open with one touch, and seats so incredibly easy to configure, you'll look for excuses to pack up and go. Nissan. Innovation that excites.™

Nissan Quest LE shown in Platinum Graphite with Dual Opening Glass Moonroof Package.



**WHAT IF YOU COULD DOUBLE-CHECK
YOUR DOUBLE-CHECK?**

You always check your outside mirrors to change lanes. What if your vehicle kept an eye on things as well? Quest's available Blind Spot Warning System uses radar to do just that. When it detects a vehicle in the blind spot area, an indicator lights up on your mirror. If you put on your turn signal, the indicator flashes and you'll hear a warning chime. It's nice to have a little extra peace of mind.¹

Nissan Quest SL shown in Platinum Graphite with Dual Moonroof and Bose® Audio System Package.

¹The Blind Spot Warning System is not a substitute for proper lane change procedures. The system will not prevent contact with other vehicles or accidents. It may not detect every vehicle or object around you. Bose® is a registered trademark of The Bose Corporation.



INNOVATION THAT'S ON YOUR SIDE.

What's it like to have a Quest in your life? Not just a minivan, but possibly the most helpful member of your family. Imagine putting air in your tires and knowing when they're full. Or looking up to see not one, but two available dual-opening moonroofs! Freezing outside? Available Quick Comfort heated front seats warm you up fast. Long to-do list? Quest makes you a hero. Whether seating seven or filling with gardening supplies, you've never flipped and folded seats so easily. With a unique third row that folds forward instead of stowing in the rear, you can load up on spring blooms without stopping to drop off the groceries. No matter what's on the agenda, it's your life Quest has in mind.

¹Available on Quest SL and LE.

Nissan Quest LE shown in Beige Leather. U.S. instrumentation shown.

CARGO MADE SMARTER.

In Quest, not only does the second row fold flat, forward, and out of the way, so does the third. So unlike other minivans, instead of stowing seats, the cargo well behind the third row is a permanent place to put whatever you like, eliminating the need to ever empty it out.

Permanent rear storage well. The cargo space behind the rear seats is always open for business, thanks to third-row seats that fold forward.

Easy up, easy down. Pull the release and the third-row seats fold right down. An available power-up feature brings them back into place at the push of a button.

A second row you never have to remove. The second row folds flat, which means no more wrestling with seats.

Easy entry. Move the second row out of the way, for third-row passengers to hop in or out.

Where to put the long legs? Anywhere. With Quest's sliding second row, you can create more leg room where you need it, in the second or third row.



Any way you look at it, Quest flips and folds like no other minivan.

Quick Comfort heated front seats. Get from cold to cozy quicker. These available front-seat heaters warm you up super-fast.

Comfort seating design. Shaped and padded especially for improved posture support and comfort. Designed with your next road trip in mind.



60/40 seats and permanent rear storage well. The rear cargo area has two separate lids allowing you to keep a flat cargo floor on one side, and leave the other lid open to carry taller things.



Third-row seat down. Four of you, plus up to 2124 litres (75 cu. ft.) of cargo room.² And thanks to the clever no-stow, forward-folding third row, you can pack some gear in the permanent rear storage well in the rear.



Second- and third-row seats down. Just the pair of you off to the flea market. What will you bring home? With up to 3392 litres (119.8 cu. ft.) to fill, there's no telling! And you won't even have to remove the second row.



Nissan Quest LE shown in Beige Leather. U.S. instrumentation shown.

Cargo and load capacity limited by weight and distribution. Always secure all cargo. ¹3392 litres (119.8 cu. ft.) on S, SV and SL models without Bose® audio system. 3259 litres (115.1 cu. ft.) on SL and LE models with Bose® audio system. ²2124 litres (75 cu. ft.) on S, SV and SL models without Bose® audio system. 1991 litres (70.3 cu. ft.) on SL and LE models with Bose® audio system.



Nissan Quest LE shown in Beige Leather. U.S. instrumentation shown.

Power rear liftgate

This available feature is the next best thing to your own doorman. Just push a button on your keyless remote, the liftgate or on the dash.

One-touch power sliding doors

Hands full? No problem. Quest's available one-touch power sliding doors open easily.

Conversation mirror

Don't miss a thing. With this available feature, see who's behaving, or not, in the rows behind.

Power second-row windows

Open up to let fresh air in, or to just wave goodbye.

Low step-in height

It's easy for anyone to get in a Quest.

LIFE MADE EASIER.

From a convenient way to get everyone inside to a better way to wave goodbye, you'll see innovative design at work for you – everywhere you look.



Nissan Intelligent Key® and Push Button Ignition.

A system so smart, you can unlock the doors, open the available power rear liftgate and start the engine, all without taking the key out of your pocket or purse.



Removable 2nd-row console. Your choice. Cup holders for the rear and a place to stash small items. Or remove this handy console to create some walk-around space.



SAFETY ALL AROUND.

It's protecting you and your most precious cargo that drives our comprehensive approach to safety.

Six standard airbags. The Nissan Advanced Airbag System incorporates seat belt sensors and an occupant-classification sensor to inflate the dual-stage supplemental front airbags according to crash severity and seat belt usage. Quest also has side-impact supplemental airbags built into each front seat so they move with you as you adjust your seat. And two roof-mounted curtain side-impact supplemental airbags help provide head protection for all rows of outboard occupants.¹

Front-seat Active Head Restraints. These help reduce the chance of whiplash injuries to you and your front passenger by moving up and forward during certain rear-end collisions.

Vehicle Dynamic Control (VDC)/Traction Control System (TCS). Stay on course with VDC that senses understeer or oversteer and compensates accordingly.² Get a grip with TCS. It senses drive-wheel spin and reduces engine power and/or applies front brakes to help maintain traction.

Anti-lock Braking System (ABS). ABS pumps the brakes faster than you could in panic-braking situations, to help prevent wheel lockup.

Electronic Brake force Distribution (EBD). Monitors weight distribution and adjusts rear brake force for more balanced braking.

Brake Assist (BA). Quick! In an emergency, Brake Assist helps boost braking by applying additional braking pressure.

Brake Override Technology. Like every Nissan since 2005, Quest comes standard with Brake Override Technology. It's designed to help slow down your vehicle and bring it to a safe stop in an emergency by overriding accelerator input and reducing engine power when the accelerator and brake pedals are applied simultaneously.

snuggly kids. Nissan safety engineers have dedicated thousands of hours to evaluating hundreds of child restraints in Nissans. The result: An industry first, The Snuggly Kids Child Safety Seat Fit Guide. This guide lists child seats that fit the rear seats of Nissan vehicles, as well as offers invaluable tips on correct installation. Look for the latest Fit Guide at nissan.ca/owners/en.

LATCH. The Quest LATCH System (Lower Anchors and Tethers for CHildren) lets you easily secure LATCH-compatible child restraints in specific second- or third-row seats without using a seat belt or a locking clip.



¹Airbags are only a supplemental restraint system; always wear your seat belt. Even with the occupant-classification sensor, rear-facing child restraints should not be placed in the front-passenger's seat. Also, in addition to any other requirement of applicable law, all children 12 and under should ride in the rear seat properly secured in child restraints, booster seats, or seat belts according to their size. Airbags will only inflate in certain accidents; see your Owner's Manual for more details. Inflated airbags shown for illustration purposes only; actual coverage area may differ. Airbags deflate after deployment. ²VDC, which should remain on when driving except when freeing the vehicle from mud or snow, cannot prevent accidents due to abrupt steering, carelessness, or dangerous driving techniques. Always drive safely. ³Parking aid/convenience feature. Cannot completely eliminate blind spots or warn of moving objects. May not detect every object. Always check surroundings before moving vehicle. Not a substitute for proper backing procedures. Always turn to check what is behind you before backing up. ⁴XM® Satellite Radio is available in the 10 Canadian provinces and the 48 contiguous United States. Basic monthly subscription required and sold separately after trial period. Subscription subject to customer agreement at siriusxm.ca. All fees and programming subject to change. © 2012 Sirius XM Canada Inc. The Sirius and XM names and all related marks and logos are trademarks of Sirius XM Radio Inc. All other trademarks are the property of their respective owners. ⁵Availability of specific features is dependent upon the phone's Bluetooth® support. Please refer to your phone Owner's Manual for details. Bluetooth word mark and logos are owned by Bluetooth SIG, Inc., and any use of such marks by Nissan is under licence. ⁶Parking aid/convenience feature. Cannot completely eliminate blind spots. May not detect every object and does

GET THE QUEST YOU WANT. HOW YOU WANT IT.

S

3.5-litre V6 engine with Xtronic CVT® (Continuously Variable Transmission), Anti-lock Braking System (ABS), Vehicle Dynamic Control (VDC)² with Traction Control System (TCS), Tire Pressure Monitoring System (TPMS) with Easy-Fill Tire Alert, Nissan Intelligent Key® with Push Button Ignition, AM/FM/CD audio system with auxiliary audio input jack, roof rails, power second-row side windows, 7-passenger seating capacity and permanent rear under-floor storage (behind third row), fold-flat second-row captain's chairs and fold-flat third-row bench seat, wood-tone trim, Nissan Advanced Airbag System¹ and six standard airbags¹



SV

INCLUDES S EQUIPMENT PLUS:

16" Aluminum-alloy wheels, fog lights, one-touch power sliding doors, RearView Monitor,³ conversation mirror, premium AM/FM/CD audio system with 109 mm (4.3") colour display and six speakers, SiriusXM Satellite Radio,⁴ Bluetooth® Hands-Free Phone System,⁵ USB connection port for iPod® interface and other compatible devices, leather-wrapped steering wheel with illuminated audio controls, Tri-zone Automatic Climate Control, Quick Comfort heated front seats

KEY AVAILABLE PACKAGE:

DVD Entertainment System Package



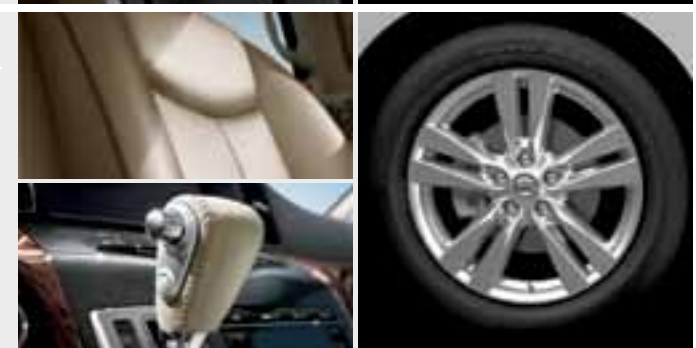
SL

INCLUDES SV EQUIPMENT PLUS:

18" Aluminum-alloy wheels, side sill spoilers, one-touch power liftgate, leather-appointed seating surfaces, leather shift knob, 8-way power driver's seat with power lumbar support, auto-dimming inside rearview mirror with digital compass, HomeLink® universal garage-door opener

KEY AVAILABLE PACKAGES:

DVD Entertainment System Package, Dual Moonroof and Bose® Audio System Package



LE

INCLUDES SL EQUIPMENT PLUS:

Around View® Monitor,⁶ Blind Spot Warning System,⁷ automatic tilt-in-reverse outside mirrors, Nissan Hard Drive Navigation System with 203 mm (8.0") touch-screen monitor, voice recognition and NavTraffic,⁸ DVD Entertainment System with second-row 279 mm (11.0") DVD monitor, Bose® audio system with 13 speakers, Advanced Climate Control System with polyphenol microfilter, driver's memory seat system, 4-way power front-passenger's seat, power-return third-row seat

KEY AVAILABLE PACKAGE:

Dual Opening Glass Moonroof Package



not warn of moving objects. Always check surroundings before moving vehicle. Not a substitute for proper backing procedures. Always turn to check what is behind you before backing up. ⁷The Blind Spot Warning System is not a substitute for proper lane change procedures. The system will not prevent contact with other vehicles or accidents. It may not detect every vehicle or object around you. ⁸NavTraffic® is available in select North American markets. In Canada, at time of printing, incident and flow data is available for 7 metropolitan areas of Canada (Vancouver, Calgary, Edmonton, Toronto, Ottawa, Montreal and Quebec City). Limited flow data is available for Toronto. Subscription sold separately after trial period. Subscriptions subject to customer agreement at siriusxm.ca. Fees and programming subject to change. © 2012 Sirius XM Canada Inc. XM name and NavTraffic are registered trademarks of Sirius XM Radio Inc. All other trademarks and channel names are property of their respective owners. ⁹The Bluetooth word mark and logos are owned by Bluetooth SIG, Inc. and any use of such marks by Nissan is under licence. ¹⁰Bose is a registered trademark of The Bose Corporation. ¹¹HomeLink is a registered trademark of Johnson Controls Technology Company. ¹²iPod is a registered trademark of Apple, Inc. All rights reserved. iPod not included.

FEATURES AND SPECIFICATIONS

Engine	S	SV	SL	LE
VQ35DE – 3.5-litre DOHC 24-valve V6 engine ¹				
Horsepower – 260 HP @ 6000 rpm				
Torque – 240 lb-ft @ 4400 rpm				
Emissions – Tier 2, Bin 5				
Continuously Variable Valve Timing Control System (CVTCS)				
Nissan Direct Ignition System with double-tipped iridium spark plugs				
Electronic drive-by-wire throttle				
Engine block heater				

Drivetrain
Front engine/Front-Wheel Drive
Xtronic CVT [®] (Continuously Variable Transmission)

Brakes
4-wheel vented disc brakes
Anti-lock Braking System (ABS)
Electronic Brake force Distribution (EBD)
Brake Assist

Suspension/Steering
Independent strut front suspension
Multi-link independent rear suspension
Front stabilizer bar
Vehicle-speed-sensitive electric power-assisted
rack-and-pinion steering

Wheel/Tires
16" x 6.5" steel wheels with bolt-on wheel covers
16" x 7" aluminum-alloy wheels
18" x 7" aluminum-alloy wheels
P225/65TR16 all-season tires
P235/55TR18 all-season tires

Exterior Features
Automatic on/off headlights
High Intensity Discharge (HID) xenon headlights
Fog lights
Dual sliding rear doors
One-touch power sliding doors
One-touch power liftgate
Roof rails
Roof rack crossbars
Dual opening glass moonroof with sliding sunshade
Power outside mirrors
Power outside mirrors with turn signal indicators
Heated outside mirrors
Automatic tilt-in-reverse outside mirrors
Front UV-reducing solar glass
Rear privacy glass
Chrome grille and licence plate finisher
Side sill spoilers with chrome accents

Comfort/Convenience
Blind Spot Warning System
Around View [®] Monitor
RearView Monitor
Nissan Hard Drive Navigation System with 203 mm (8.0") VGA
touch-screen monitor and voice recognition

Comfort/Convenience (continued)	S	SV	SL	LE
NavTraffic ²				
Bluetooth [®] Hands-Free Phone System				
HomeLink [®] universal garage-door opener				
Auto-dimming inside rearview mirror (SL with digital compass)				
Air conditioning				
Tri-zone Automatic Climate Control (ACC)				
Advanced Climate Control System				
In-cabin charcoal microfilter				
Polyphenol microfilter				
Second- and third-row air conditioning/heater vents with				
second-row controls				
Nissan Intelligent Key [®] with Push Button Ignition				
Nissan Intelligent Key [®] with remote front windows down				
Power door locks with auto-locking feature				
Power front windows with front one-touch up/down	³ 			
Power second-row side windows				
Second- and third-row sunshades				
Tilt and telescoping steering column				
Cruise control with illuminated steering-wheel-mounted switches				
Variable intermittent speed-sensitive windshield wipers and rear wiper				
Dual front map lights, dual second- and dual third-row reading lights				
Dual illuminated visor vanity mirrors with extenders				
Conversation mirror				
First- and second-row height-adjustable seat belts				
Two 12-volt DC power outlets				
120-volt AC power outlet		 	 	
Retained accessory power and battery saver				
First-row centre console with cup holders				
Removable second-row centre console				
Front seatback grocery bag hooks				
Passenger seatback pocket				
Driver's seatback pocket				
Permanent rear under-floor storage well				

Seating/Appointments
6-way manual driver's seat with centre armrest
8-way power driver's seat with centre armrest
4-way power front-passenger's seat
Driver's seat power adjustable lumbar support
Driver's memory seat system (two presets, remote-activated)
Quick Comfort heated front seats
Second-row captain's chairs (sliding and reclining) with third-row
easy-entry feature
Fold-flat second-row captain's chairs
60/40 Split fold-flat third-row bench seat
Quick-release third-row folding seatbacks
Power-return third-row seat
Cloth seat trim
Leather seating surfaces
Leather-wrapped steering wheel
Leather-wrapped shift knob
Wood-tone trim on dashboard and front door panels
Wood-tone trim on sliding door panels

Audio/Entertainment
AM/FM/CD audio system
Four speakers
Premium AM/FM/CD audio system with 109 mm (4.3") colour display

Audio/Entertainment (continued)	S	SV	SL	LE
Six speakers				
Bose [®] audio system with AM/FM/CD			 	
13 Speakers			 	
SiriusXM Satellite Radio ⁴				
DVD Entertainment System with 178 mm (7-inch) colour in-dash				
monitor – 203 mm (8-inch) on LE		 		
Second-row 279 mm (11.0") WVGA DVD monitor with				
auto-dimming function		 		
Dual Media Playback capability		 		
Two wireless headsets and remote control		 		
Auxiliary audio/video input jacks		 		
MP3/WMA CD playback capability				
Radio Data System (RDS)				
Speed-sensitive volume control				
Auxiliary audio input jack				
USB connection port for iPod [®] interface and other compatible devices				
Illuminated steering-wheel-mounted audio controls				

Safety/Security
Nissan Advanced Airbag System with dual-stage supplemental front
airbags, seat belt sensors and occupant-classification sensor
Driver and front-passenger seat-mounted side-impact
supplemental airbags
Roof-mounted curtain side-impact supplemental airbags for first-,
second- and third-row outboard occupant head protection
Vehicle Dynamic Control (VDC) with Traction Control System (TCS)
3-point ALR/ELR passenger seat belt system (ELR for driver)
Front seat belts with pre-tensioners and load limiters
Front-seat Active Head Restraints and height-adjustable head
restraints for all positions
LATCH System (Lower Anchors and Tethers for CHildren)
Child-safety sliding rear door locks
Zone Body construction with front and rear crumple zones and
hood-buckling creases
Energy-absorbing steering column
High-strength steel side-door guard beams
Tire Pressure Monitoring System (TPMS) with Easy-Fill Tire Alert
Anti-theft System
Immobilizer Key System

PACKAGES

	DVD Entertainment System Package (SV, SL)
	DVD Entertainment System with 178 mm (7-inch) colour in-dash monitor • Second-row 279 mm (11.0") WVGA DVD monitor with auto-dimming function • Auxiliary audio/video input jacks • Dual Media Playback capability • Two wireless headsets and remote control
	<ul style="list-style-type: none">120-volt AC power outlet <p>This package replaces standard auxiliary audio input jack.</p>

	Dual Moonroof and Bose[®] Audio System Package (SL)
	Dual opening glass moonroof with sliding sunshade • Bose [®] audio system with AM/FM/CD and 13 speakers
	This package requires the DVD Entertainment System Package.

	Dual Opening Glass Moonroof Package (LE)
	Dual opening glass moonroof with sliding sunshade

DIMENSIONS/CAPACITIES/WEIGHTS/FUEL

Dimensions – mm (inches)	
Exterior	
Wheelbase	3000 (118.1)
Overall length	5100 (200.8)
Overall width	1971 (77.6)
Overall height	1854 (73.0) with roof rack

Track width	
16" Wheels	1730 (68.1)
18" Wheels	1720 (67.7)
Step-in height	
16" Wheels	399 (15.7)
18" Wheels	409 (16.1)

Interior (front/second row/third row)	
Head room	
Without moonroof	1069/1056/1015 (42.1/41.6/40.0)
With moonroof	1038/1013/965 (40.9/39.9/38.0)
Leg room	1113/932/1029 (43.8/36.7/40.5)
Hip room	1456/1677/1259 (57.3/66.0/49.6)
Shoulder room	1638/1605/1554 (64.5/63.2/61.2)

Capacities	
Interior passenger volume – L (cu. ft.)	5035 (177.8) without moonroof
Interior passenger volume – L (cu. ft.)	4839 (170.9) with moonroof
Interior volume index – L (cu. ft.)	6082 (214.8) without moonroof
Cargo volume – L (cu. ft.)	
Rear under-floor storage well (S, SV, SL)	323 (11.4)
Rear under-floor storage well with	
Bose [®] audio system (SL, LE)	190 (6.7)
Second row upright, third row folded flat	1801 (63.6)
Second row folded, third row folded flat	3070 (108.4)
Fuel tank – L (Imp gal)	75.6 (16.6)

Curb Weights – kg (lbs)				
	S	SV	SL	LE
Base total	1987 (4381)	1999 (4407)	2043 (4504)	2072 (4568)

2013 Fuel Consumption Estimates – L/100 km (MPG)	
City/Hwy	11.1 (25)/8.1 (35)
¹ Actual mileage may vary with driving conditions – use for comparison only.	

 Standard	 Part of Dual Moonroof and Bose [®] Audio System Package
 Accessory	 Part of Dual Opening Glass Moonroof Package
 Part of DVD Entertainment System Package	

^[1] Use regular unleaded fuel with 87 octane. For maximum power, use premium fuel.

^[2] NavTraffic® is available in select North American markets. In Canada, at time of printing, incident and flow data is available for 7 metropolitan areas of Canada (Vancouver, Calgary, Edmonton, Toronto, Ottawa, Montreal and Quebec City). Limited flow data is available for Toronto. Subscription sold separately after trial period. Subscriptions subject to customer agreement at siriusxm.ca. Fees and programming subject to change. © 2012 Sirius XM Canada Inc. XM name and NavTraffic are registered trademarks of Sirius XM Radio Inc. All other trademarks and channel names are property of their respective owners.

^[3] One-touch auto-up/down on driver's side only.

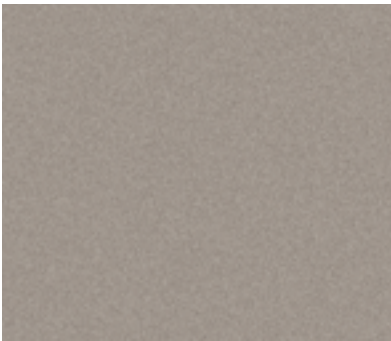
^[4] XM® Satellite Radio is available in the 10 Canadian provinces and the 48 contiguous United States. Basic monthly subscription required and sold separately after trial period. Subscription subject to customer agreement at siriusxm.ca. All fees and programming subject to change. © 2012 Sirius XM Canada Inc. The Sirius and XM names and all related marks and logos are trademarks of Sirius XM Radio Inc. All other trademarks are the property of their respective owners.

^[5]Bose is a registered trademark of The Bose Corporation.

^[6]The Bluetooth word mark and logos are owned by Bluetooth SIG, Inc., and any use of such marks by Nissan is under licence.

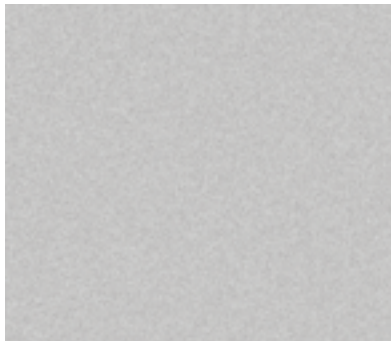
^[7]HomeLink is a registered trademark of Johnson Controls Technology Company.

PAINT SELECTIONS



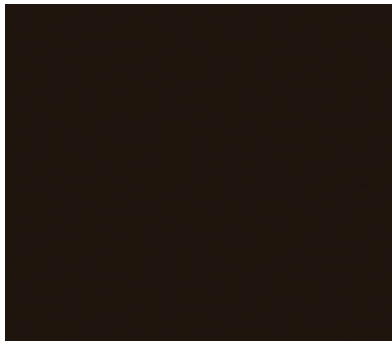
Titanium¹ Beige KAY S SV SL LE

BEIGE CLOTH	■	■	■	■
BEIGE LEATHER			■	■



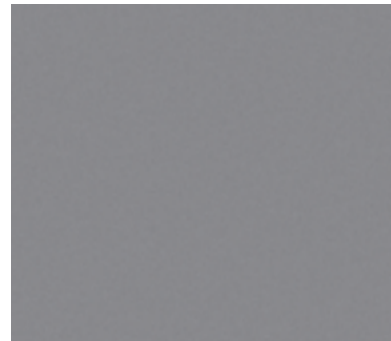
Brilliant Silver¹ K23 S SV SL LE

GREY CLOTH	■	■	■	■
GREY LEATHER			■	■



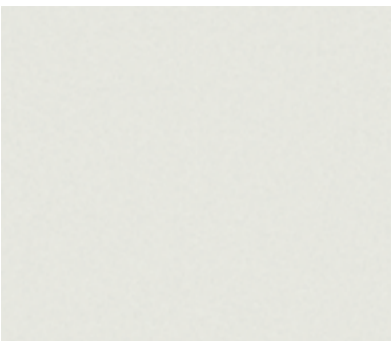
Dark Mahogany¹ GAE S SV SL LE

GREY LEATHER			■	■
BEIGE LEATHER			■	■



Platinum Graphite¹ K51 S SV SL LE

GREY CLOTH	■	■	■	■
GREY LEATHER			■	■



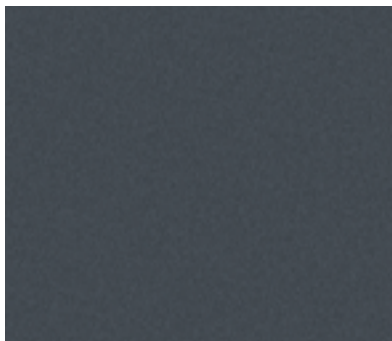
Pearl White¹ QAB S SV SL LE

GREY CLOTH	■	■	■	■
GREY LEATHER			■	■
BEIGE LEATHER			■	■



Super Black KH3 S SV SL LE

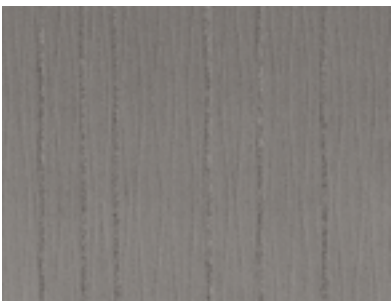
GREY CLOTH	■	■	■	■
GREY LEATHER			■	■
BEIGE CLOTH	■	■	■	■
BEIGE LEATHER			■	■



Twilight Grey¹ FAA S SV SL LE

GREY LEATHER			■	■
BEIGE CLOTH	■	■	■	■
BEIGE LEATHER			■	■

FABRIC SELECTIONS



Grey Cloth



Beige Cloth



Grey Leather



Beige Leather

■ Standard
■ Extra cost option

Nissan has taken care to ensure that the colour swatches presented here are the closest possible representations of actual vehicle colours. Swatches may vary slightly due to the printing process and whether viewed in daylight, fluorescent or incandescent light. Please see your local Nissan Dealership for actual colours and pricing information.

ACCESSORIES

GENUINE NISSAN ACCESSORIES. IMPRESS. CONNECT. PROTECT. ORGANIZE.

Every Genuine Nissan Accessory is: custom-fit, custom-designed and durability-tested; backed by Nissan's 3-year/60,000 km Accessories limited warranty; and can be financed when installed by dealer at time of purchase.²

- A. Roof Rail Crossbars³**
Made of steel, so you know they're good.
- B. Cargo Area Protector³**
Because being a cargo area isn't easy.
- C. Cargo Organizer³**
Indulge your inner neat freak.
- D. Illuminated Kick Plates**
Fewer scuffs and a grand entry, every time.
- E. Hatch Tent**
It's a minivan. It's a campsite. It's both!
- F. Rear Bumper Protector**
Scratches? What scratches?

See your Nissan dealer for details, or go to accessories.nissan.ca



COMMITMENT

Buying and owning a Nissan is like driving one: quick, convenient, confidence-inspiring.



Finance Options Through Nissan Canada Finance, we offer many attractive purchase and lease programs, all with competitive rates and terms. With our flexible finance options, driving home a new Nissan has never been easier. Consult your local Nissan Dealership for complete details.

No-Nonsense Warranty Every 2013 Nissan is covered by a 3 year/60,000 km⁴ Comprehensive New Vehicle Warranty, a 5 year/100,000 km⁴ Powertrain Warranty, an 8 year/130,000 km⁴ Emission Control Warranty on selected components, and a 5 year/unlimited km Corrosion Perforation Warranty. As a Nissan owner, you'll also receive a 3 year Roadside Assistance program available to you 24 hours a day. Terms, conditions and exclusions apply. See Warranty Information Booklet for complete details.

Added Security Plan (ASP) For ultimate peace of mind, consider the Nissan Added Security Plan. It's our commitment to be there for you, and to help you leave your worries behind. Different plans, available for both purchased and leased vehicles, let you tailor the coverage to your driving habits.

Nissan's philosophy toward the environment, "Seeking a symbiosis of people, vehicles and nature," describes our ideal for a sustainable mobile society, now and in the future. We launched the Nissan Green Program with specific objectives to realize this goal, and we are pursuing it energetically.

²See your Nissan Dealership and read the actual limited warranty. ³Cargo and load capacity limited by weight and distribution. Always secure all cargo. Heavy loading of the minivan with cargo, especially on the roof, will affect handling and stability of the vehicle. ⁴Whichever comes first.