

2011
N-SERIES

ISUZU
TRUCK
CANADA



ISUZU

2011
N-SERIES



The Trucks to Drive for Innovation

Performance. Practicality. Dependability. Durability. Whether you are a small business operator with a single vehicle or you manage an entire fleet, you need a truck that will do more, while costing less to operate.

At Isuzu, that's the only kind of truck we sell.

Our engines are legendary for their power, economy and long life. Our frames accommodate a wide range of body applications. Our low-cab-forward design provides remarkable maneuverability.

Isuzu trucks are engineered to maximize driver productivity.

Introducing the 2011 Isuzu N-Series Trucks. Now, more than ever, these are the trucks that drive up your productivity while driving down your cost of ownership.

More powerful and efficient 4HK1-TC engine. The storied Isuzu 5.2-liter turbo diesel found in every 2011 NPR-HD, NQR and NRR generates more horsepower and lower emissions while delivering better fuel economy than before.

The cleanest Isuzu diesel engines ever. All 2011 Isuzu N-Series trucks meet tough EPA 2010 and CARB OBD emissions standards, and are clean idle certified. Isuzu trucks are the first in their class to offer Selective Catalytic Reduction to reduce NOx emissions by 85%.

More agile than ever. For 2011, with an increased wheel-cut angle, every Isuzu N-Series truck has a tighter turning circle. They're the most maneuverable N-Series trucks ever.

All-new 2011 Isuzu NPR ECO-MAX
The newest member of the N-Series family offers the features drivers expect from an Isuzu truck.

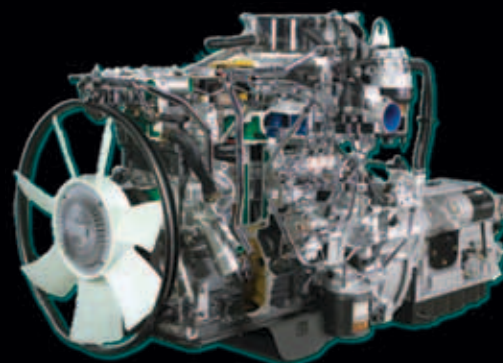
With its new 3.0-liter turbocharged diesel engine, the 12,000-lb. GVWR NPR ECO-MAX gets up to 20% better fuel economy than its predecessor.

The Trucks to Drive for Economy and Performance

2011
N-SERIES



4JJ1-TC 3.0 Liter



4HK1-TC 5.2 Liter

Tilt the cab of any 2011 Isuzu N-Series truck and you'll find a state-of-the-art powerplant engineered to meet your demands for performance, efficiency and durability.

The Isuzu 4JJ1-TC 3.0-liter diesel engine. Standard on the 2011 NPR ECO-MAX is the newest engine in the Isuzu family—the 4JJ1-TC.

Its high-pressure common-rail fuel injection system wrings the most energy out of every drop of fuel, and its intercooled, variable-geometry turbocharger provides excellent response over the engine's entire RPM range. Together, these features help the 4JJ1-TC produce 150 horsepower and 282 lbs.-ft. of torque.

Despite its spirited performance, this engine is a miser. In fact, the NPR ECO-MAX achieves up to 20% better fuel economy than the previous 12,000-lb. GVWR NPR.

Like every Isuzu powerplant, the 4JJ1-TC is a true commercial vehicle engine. Each component has been crafted to reduce maintenance and increase durability.

So it's no surprise that the 4JJ1-TC can be driven up to 16,000 km between oil changes and has a class-leading B10 durability rating of 500,000 km—meaning that 90% of 4JJ1-TC engines will reach that mileage before requiring an overhaul.

The Isuzu 4HK1-TC 5.2-liter diesel engine. Standard on every NPR-HD, NQR and NRR is the Isuzu 4HK1-TC engine—known worldwide for its power and ruggedness, and improved for 2011 to deliver even more performance, economy and reliability.

The 4HK1-TC is now equipped with electronic high-pressure common-rail direct injection and a water-cooled EGR system to achieve unprecedented performance—210 horsepower for trucks equipped with the automatic transmission.

At Isuzu, improvements in power never come at the expense of reliability, durability, or fuel economy. The 4HK1-TC engine can still run up to 16,000 km between oil changes reducing maintenance costs and downtime and boasts an astonishing B10 durability rating of 500,000 km. And despite the increased power and lower emissions, 2011 Isuzu N-Series trucks equipped with the 4HK1-TC engine will achieve approximately 8% better fuel economy than the models they replace.

Aisin six-speed automatic transmission. Standard on every 2011 Isuzu N-Series truck is an Aisin heavy-duty six-speed automatic transmission with PTO capability, engineered to work with the Isuzu diesel engine to achieve optimal performance and economy.

New for 2011, the lock-up torque converter operates in power take-off (PTO) mode. Under specifically determined engine conditions, when PTO mode is selected, the torque converter will lock up automatically to eliminate slip and deliver more power and better speed control for demanding power take-off applications.

More capability to haul your biggest loads. The 2011 Isuzu NRR boasts a front axle crafted of higher-strength material along with increased-capacity steering gear to achieve a front GAWR of 7,275 lbs.—a 445-lb. improvement over its predecessor, for more loading flexibility and improved productivity.

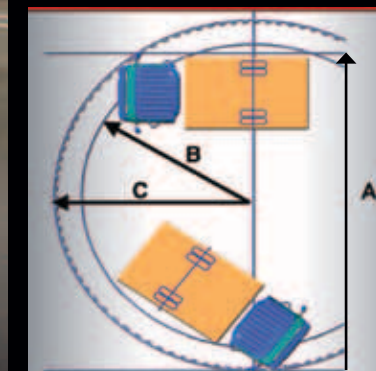
The Trucks to Drive for Productivity and Comfort



Ergonomics meets functionality, easy-to-reach controls, convenient storage areas and access to fluid checks



The Crew Cab's rear seat holds four in comfort and safety



Turn-on-a-Dime Maneuverability

- A = Minimum turning diameter
- B = Minimum turning diameter curb to curb
- C = Minimum turning diameter wall to wall

Sleek and bold, Isuzu N-Series trucks make a striking statement on the highway and on the job site. But these trucks have more than just a pretty face. Every element of the cab and chassis has been designed to make the driver more comfortable and productive, and to lower your cost of ownership.

Low-cab-forward design. No conventional truck, pickup or cutaway can give you the advantages of the Isuzu low-cab-forward design:

- More cargo space within a given overall length
- Tighter turning diameters
- Easy access to the engine through the full 45-degree tilt-cab function that allows quicker service
- Easier entry and exit
- Better visibility

Isuzu N-Series trucks—with wheelbases from 109 to 212 inches—can accommodate bodies ranging from 10 to 24 feet in length. That means there's an Isuzu truck for virtually any medium-duty need.

The Hexapod cab. Only Isuzu offers the exclusive Hexapod design that maximizes interior space, optimizes comfort, and incorporates ingenious productivity and maintenance features.

Every Isuzu N-Series truck offers three-across seating with ample head, leg and shoulder room. Crew Cab models accommodate an additional four passengers in back.

The center front passenger seat features a fold-down tray that can serve as a convenient in-cab work area for the driver. Pockets in the doors and seat backs provide convenient places to stow paperwork.

The functionality of the Hexapod cab can save you time and money. All basic maintenance checks can be performed without ever having to tilt the cab:

- The hydraulic brake fluid reservoir and windshield washer fluid container are located on the dash
- Fuses are hidden behind a panel below the the dash, within easy reach and line of site of the driver
- Even the truck's engine oil and fuel level can be checked from inside the cab

Easy access to common service items means less downtime and lower maintenance costs.

Choice of Standard Cab and Crew Cab models. In addition to the familiar Standard Cab configuration, Isuzu NPR-HD and NQR trucks are available as spacious Crew Cab models, offering GVWRs of 14,500 lbs. and 17,950 lbs. and wheelbases of 150 or 176 inches.

Best-in-class maneuverability. Curb to curb or wall to wall, Isuzu trucks are the most maneuverable in their class—and are far more nimble than any conventional truck could ever hope to be.

For 2011, Isuzu N-Series trucks reach new levels of agility over prior model years. A modified power steering system allows for wheel-cut angles up to 49.5 degrees. As a result, NQR and NRR drivers will enjoy an average 1.2-foot tighter turning diameter, while NPR models' turning diameter improves 2.8 feet.



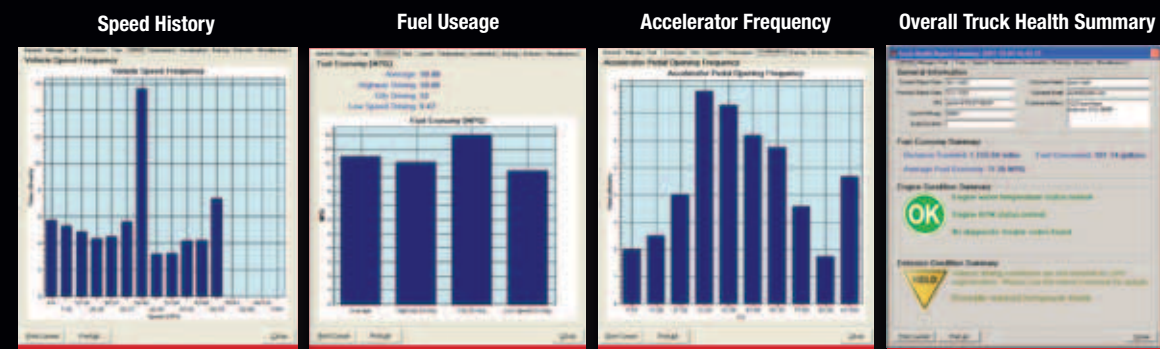
Isuzu's new Multi-Information Display monitors particulate matter in the DPF, engine oil and filter life, fuel economy and over a dozen other vital functions



Particulate Matter

Engine Oil and Filter Life

Fuel Economy



The Data Recording Module and Vehicle Health Report are two more examples of advanced Isuzu technology that helps you reduce operating costs, improve performance, manage risk and protect your investment.

The Trucks to Drive for Low Cost of Operation

Multi-Information Display. Nestled in the instrument cluster of every 2011 Isuzu N-Series truck is a new means of monitoring vehicle performance and reducing maintenance costs and downtime—the Multi-Information Display (MID).

Isuzu is the first in its class to offer an MID that alerts drivers to conditions far beyond the scope of typical gauges and warning lights. With the touch of a button, the MID alerts drivers to the status of over a dozen functions:

- Diesel exhaust fluid (DEF) level
- Particulate matter emissions level
- Estimated remaining life, in mileage, of engine, transmission, differential and steering oil, and engine oil and fuel filters
- Fuel economy (average, instant and by trip)

Armed with this information, an Isuzu driver can adapt their driving habits to reduce fuel consumption and emissions and to improve overall performance.

Isuzu Vehicle Health Report. Every new Isuzu N-Series truck incorporates a powerful vehicle management tool as standard equipment.

The Data Recording Module (DRM) monitors your truck's performance and enables your Isuzu Dealer's technicians to produce an Isuzu Vehicle Health Report that shows the status and condition of your truck's:

- Engine, transmission and brake systems
- Emissions system
- Brake usage history
- Fuel economy
- Driver operating habits (including deceleration and acceleration frequency, speed history and more)

Vehicle Health Reports provide clear indications of potential problems and list important details of the current operating status of major components.

The report permits speedy and accurate service diagnosis, identifies component failure and wear history, maximizes vehicle uptime, and gives you the information you need to reduce your fuel usage. By asking your dealer to monitor your truck's performance through Isuzu Vehicle Health Reports, your operating costs can be reduced and the long-term residual value of your truck can be increased.

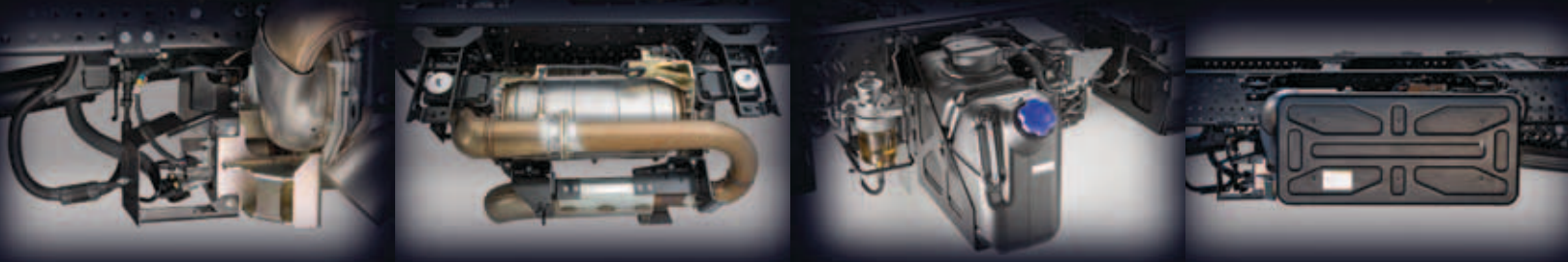


DEF Injector

DPF and SCR Catalyst

DEF Tank

Covered DPF and SCR Catalyst



Isuzu's 2011 N-Series trucks are the first medium-duty low-cab-forward trucks to meet the Environmental Protection Agency 2010, the most stringent emissions standards in the world.

Isuzu's heritage of clean diesel technology enables us to be the first to offer Selective Catalytic Reduction (SCR) technology with Diesel Exhaust Fluid (DEF) injection.

State-of-the-art SCR technology. Here's how it works.

- The engine's stainless-steel exhaust system routes to a diesel particulate filter (DPF) and SCR system unit
- Diesel exhaust fluid (DEF) is injected into the exhaust stream between the filter and the SCR catalyst
- The heat of the exhaust turns the fluid into ammonia gas, water vapor and carbon dioxide
- Inside the catalyst, ammonia gas transforms the exhaust's oxides of nitrogen (NOx) into harmless nitrogen gas

Together with an enhanced exhaust gas recirculation (EGR) system and variable-geometry turbocharger, SCR technology allows all 2011 Isuzu N-Series trucks to meet the demanding emissions standards.

This revised exhaust system also monitors the DPF's particulate status and the level of DEF required for the SCR system to operate, and reports the results to the driver through the Multi-Information Display.

Under normal highway operating conditions, the DPF will regenerate itself automatically to remove particulate matter from the exhaust. But under slow-speed, stop-and-go or long-idle conditions, the system may require—and will allow—the driver to manually initiate a DPF regeneration cycle manually.

The convenient DEF tank—stores 28 L of diesel exhaust fluid, and is even equipped with a heating element to ensure reliable operation in cold-climate conditions.

DEF consumption is only 1% of fuel used, so the DEF tank should be refilled every 20-25 times the fuel tank is refilled.

The Trucks that Drive Cleaner

2011 ISUZU TRUCK CANADA N-SERIES



SEE - the difference. Protecting the environment is part of the Isuzu SEE initiative - Safety, Economy and Environment. SEE enables us to bring you products that perform as well in the environment as they do in your fleet.



The Trucks to Drive Longer

ISUZU
TRUCK
CANADA
**2011
N-SERIES**



Increased Wheel Cut Angles
Improves Maneuverability



B20 Bio Diesel Capable



2010 Emissions Compliant



A dedication to durability. Every Isuzu N-Series truck is a real truck, with real commercial vehicle capability. Our strength begins with our frame—a full-length ladder-type, channel-section frame made of heat-treated carbon-manganese low-alloy steel.

The construction of our Hexapod cab includes the extensive use of galvanized steel panels, electrodeposited primer and polyester melamine paint for full protection against corrosion. Undercoating in the wheel wells guards the cab from road spray and rock chipping. Unitary construction with strong reinforcements adds to cab durability.

Built better, backed better. At Isuzu, durability isn't merely the claim we make—it's the quality we back. Isuzu's limited warranty covers basic components, engine and drivetrain items like transmission, drive axles and flywheel against defects in material and workmanship for three years, regardless of the mileage on your truck. And every 2011 Isuzu N-Series truck is warranted against perforation from corrosion for four years, regardless of mileage.

Additional details of Isuzu's outstanding warranty coverage are available at your Isuzu truck dealer.

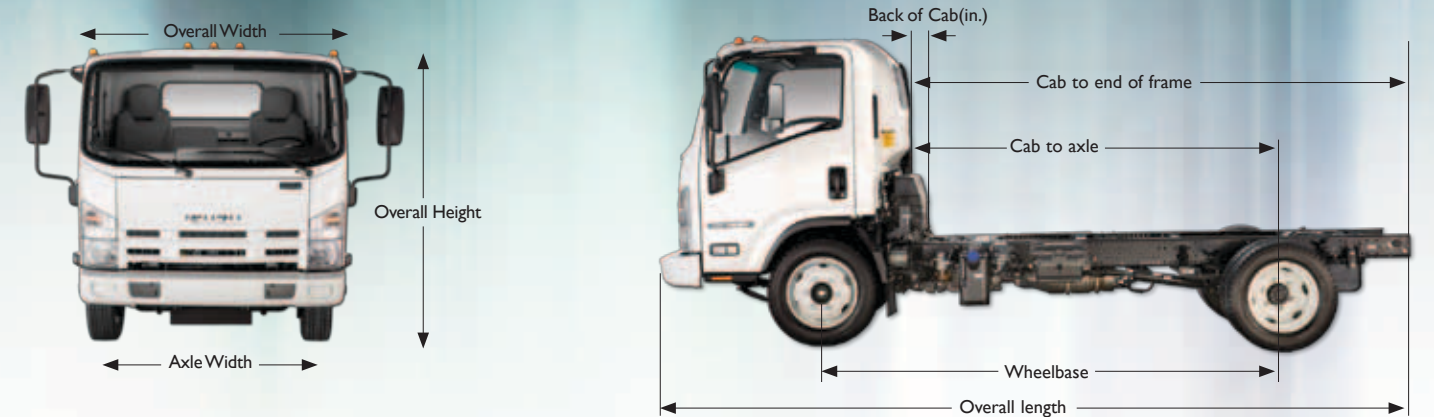
Why settle for anything less? Whether you're an owner/operator or the manager of a fleet ... whether your business is construction, delivery, landscaping, storage, or any other field that needs capability and dependability ... there is a 2011 Isuzu N-Series truck that will work for you.

With greater performance, better fuel economy, more maneuverability, reduced maintenance, longer life and lower operating costs, these are the trucks to drive for less ... for longer ... for life.

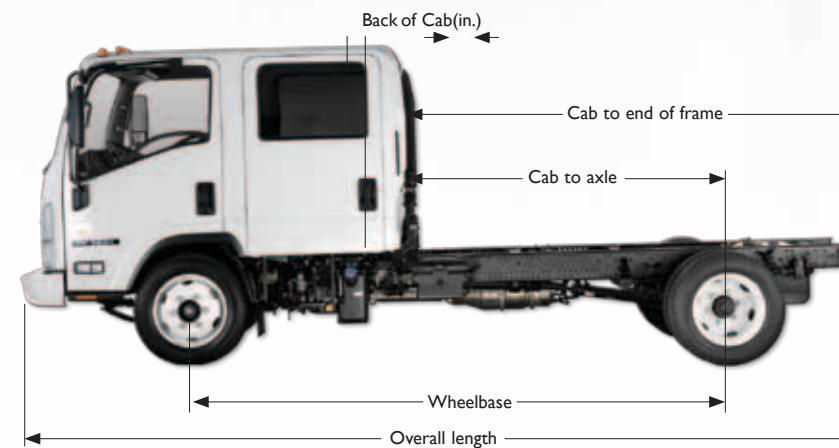
2011 N-Series Truck Specifications

ISUZU MODEL	NPR ECO-MAX	NPR-HD	NPR-HD CREW CAB	NQR	NQR CREW CAB	NRR
GVWR/GCWR	12,000/18,000 lbs.	14,500/20,500 lbs.	14,500/20,500 lbs.	17,950/23,500 lbs.	17,950/23,500 lbs.	19,500/25,500 lb.
BODY/PAYLOAD ALLOWANCE	6,315-6,453 lbs.	8,070-8,336 lbs.	7,565-7,635 lbs.	10,968-11,371 lbs.	10,545-10,615 lbs.	12,381-12,785 lbs.
GAWR						
Front	2431.2kg/5,360 lbs.	2,431kg/5,360 lbs.	2,431kg/5,360 lbs.	2,431kg/6,830 lbs.	2,431kg/6,830 lbs.	7,275 lbs.
Rear	4009.7kg/8,840 lbs.	4,481kg/9,880 lbs.	4,481kg/9,880 lbs.	12,980 lbs.	12,980 lbs.	13,660 lbs.
FRONT AXLE CAPACITY	3,098kg/6,830 lbs.	3,098kg/6,830 lbs.	3,098kg/6,830 lbs.	3,098kg/6,830 lbs.	3,098kg/6,830 lbs.	7,275 lbs.
REAR AXLE CAPACITY	4,998.5kg/11,020 lbs.	6,600kg/14,550 lbs.	6,600kg/14,550 lbs.	6,600kg/14,550 lbs.	6,600kg/14,550 lbs.	6,600kg/14,550 lbs.
Ratio	5.125	4.555 (A/T)	4.555	5.125 (A/T)	5.125	5.571 (A/T)
SUSPENSION						
F/R SPRINGS	Tapered/Multi-Leaf	Tapered/Multi-Leaf	Tapered/Multi-Leaf	Tapered/Multi-Leaf	Tapered/Multi-Leaf	Tapered/Multi-Leaf
Capacity	6,830/9,880 lbs.	6,830/9,880 lbs.	6,830/9,880 lbs.	8,440/14,550 lbs.	8,440/14,550 lbs.	8,440/14,550 lbs.
FRAME						
Section Modulus	6.07 in. ³	183 cm. ³ / 7.20 in. ³	195 cm. ³ / 11.89 in. ³	183 cm. ³ / 7.20 in. ³	195 cm. ³ / 11.89 in. ³	183 cm. ³ / 7.20 in. ³
Resistance Bending Moment	267,080 lb.-ft./in.	316,800 lb.-ft./in.	523,160 lb.-ft./in.	316,800 lb.-ft./in.	523,160 lb.-ft./in.	316,800 lb.-ft./in.
SERVICE BRAKES	Vacuum/Hydraulic with 4-Channel ABS	Vacuum/Hydraulic with 4-Channel ABS	Vacuum/Hydraulic with 4-Channel ABS	Hydraulic Boosted with 4-Channel ABS	Hydraulic Boosted with 4-Channel ABS	Hydraulic Boosted with 4-Channel ABS
Front/Rear	Disc/Drum	Disc/Drum	Disc/Drum	Disc/Drum	Disc/Drum	Disc/Drum
EXHAUST BRAKE	Standard	Standard	Standard	Standard	Standard	Standard
TRANSMISSION						
Standard	Aisin A460 6-speed auto. with double overdrive and lock-up 2 nd -6 th gears	Aisin A465 6-speed auto. with double overdrive and lock-up 2 nd -6 th gears	Aisin A465 6-speed auto. with double overdrive and lock-up 2 nd -6 th gears	Aisin A465 6-speed auto. with double overdrive and lock-up 2 nd -6 th gears	Aisin A465 6-speed auto. with double overdrive and lock-up 2 nd -6 th gears	Aisin A465 6-speed auto. with double overdrive and lock-up 2 nd -6 th gears
ENGINE	Isuzu 4JJ1-TC turbocharged intercooled diesel	Isuzu 4HK1-TC turbocharged intercooled diesel	Isuzu 4HK1-TC turbocharged intercooled diesel	Isuzu 4HK1-TC turbocharged intercooled diesel	Isuzu 4HK1-TC turbocharged intercooled diesel	Isuzu 4HK1-TC turbocharged intercooled diesel
Displacement	3.0L (183 in. ³)	5.2L (317 in. ³)	5.2L (317 in. ³)	5.2L (317 in. ³)	5.2L (317 in. ³)	5.2L (317 in. ³)
Engine Power	150@2,800 rpm	210@2,550 (A/T)	210@2,550 (A/T)	210@2,550 (A/T)	210@2,550 (A/T)	210@2,550 (A/T)
Engine Torque	282 lb.-ft. @ 1,600-2,800 rpm	598Nm/441 lb.-ft. @ 1,850 - 2,550 (A/T)	598Nm/441 lb.-ft. @ 1,850 - 2,550 (A/T)	598Nm/441 lb.-ft. @ 1,850 - 2,550 (A/T)	598Nm/441 lb.-ft. @ 1,850 - 2,550 (A/T)	598Nm/441 lb.-ft. @ 1,850 - 2,550 (A/T)
Oil Level Indicator	Dash-mounted oil level check switch and light	Dash-mounted oil level check switch and light	Dash-mounted oil level check switch and light	Dash-mounted oil level check switch and light	Dash-mounted oil level check switch and light	Dash-mounted oil level check switch and light
LIMITED SLIP DIFFERENTIAL	Optional	Optional	Optional	Optional	Optional	Optional
ALTERNATOR	110-amp	110-amp	110-amp	110-amp	110-amp	110-amp
BATTERIES	2 Maintenance-Free 750-CCA	2 Maintenance-Free 750-CCA	2 Maintenance-Free 750-CCA	2 Maintenance-Free 750-CCA	2 Maintenance-Free 750-CCA	2 Maintenance-Free 750-CCA
TIRES	215/85R16E (10-ply)	215/85R16E (10-ply)	215/85R16E (10-ply)	225/70R19.5F (12-ply)	225/70R19.5F (12-ply)	225/70R19.5F (12-ply)
STEERING	Integral Hydraulic Power	Integral Hydraulic Power	Integral Hydraulic Power	Integral Hydraulic Power	Integral Hydraulic Power	Integral Hydraulic Power
STEERING COLUMN	Tilt and Telescopic	Tilt and Telescopic	Tilt and Telescopic	Tilt and Telescopic	Tilt and Telescopic	Tilt and Telescopic
FUEL TANK						
Standard	25 Gal. in-rail	113.5L/30 Gal. in-rail	113.5L/30 Gal. in-rail	113.5L/30 Gal. in-rail	113.5L/30 Gal. in-rail	113.5L/30 Gal. in-rail
Optional	N/A	125L/33 Gal. right rail	N/A	125L/33 Gal. right rail	N/A	125L/33 Gal. right rail
FUEL/WATER SEPARATOR	Dual fuel filter with dash-mounted indicator light	Dual fuel filter with dash-mounted indicator light	Dual fuel filter with dash-mounted indicator light	Dual fuel filter with dash-mounted indicator light	Dual fuel filter with dash-mounted indicator light	Dual fuel filter with dash-mounted indicator light

NPR, NQR and NRR Dimensions



NPR-HD / NQR Crew Cab Dimensions



NPR ECO-MAX									
Wheelbase (in.)	Cab to Axle (in.)	Cab to End of Frame (in.)	Back of Cab (in.)	Overall Length (in.)	Body Length (ft.)	Overall Width (in.)	Axle Width (in.)	Overall Height (in.)	
1100	87.6	129.8	4.5	200.6	10-12	81.3	65.6	90.8	
1337	111.2	153.5	4.5	224.3	14	81.3	65.6	90.8	
1514	128.9	171.2	4.5	242.0	16-18	81.3	65.6	90.8	

NPR-HD, NQR, NRR									
Wheelbase (in.)	Cab to Axle (in.)	Cab to End of Frame (in.)	Back of Cab (in.)	Overall Length (in.)	Body Length (ft.)	Overall Width (in.)	Axle Width (in.)	Overall Height (in.)	
109	86.5	129.6	7.7	200.5	10-12	81.3	65.6	90.8/92.4*	
132.5	110.0	153.1	7.7	224	14	81.3	65.6	90.8/92.4*	
150	127.5	170.6	7.7	241.5	16-18	81.3	65.6	90.8/92.4**	
176	153.5	196.6	7.7	267.5	20	81.3	65.6	90.8/92.4**	
200 ^{††}	177.5	220.6	7.7	291.5	22	81.3	65.6	92.4 ^{†††}	
212.0 ^{††††}	189.5	232.6	7.7	303.5	24	81.3	65.6	92.4 ^{††††}	

[†]NPR-HD only 10.2 ^{††}NQR, NRR only ^{†††}NRR only ^{††††}NPR-HD / NQR, NRR

NPR-HD CREW CAB									
Wheelbase (in.)	Cab to Axle (in.)	Cab to End of Frame (in.)	Back of Cab (in.)	Overall Length (in.)	Body Length (ft.)	Overall Width (in.)	Axle Width (in.)	Overall Height (in.)	
1500	88.5	131.6	5.3	241.5	12	81.3	65.6	90.8	
1760	114.5	157.6	5.3	267.5	16	81.3	65.6	90.8	

NQR CREW CAB									
Wheelbase (in.)	Cab to Axle (in.)	Cab to End of Frame (in.)	Back of Cab (in.)	Overall Length (in.)	Body Length (ft.)	Overall Width (in.)	Axle Width (in.)	Overall Height (in.)	
1500	88.5	131.6	5.3	241.5	12	81.3	65.6	92.4	
1760	114.5	157.6	5.3	267.5	16	81.3	65.6	92.4	

2011 ISUZU N-SERIES WARRANTY COVERAGE AT A GLANCE

Vehicle Coverage	Warranty Limitations (Time or Mileage, Whichever Comes First)*		Percentage Of Dealer's Normal Charge Paid By Owner	
	Time	Vehicle Kilometres	Parts	Labor
Basic (See "What's covered")	0-3 Years	Unlimited	No Charge	No Charge
Engine	0-3 Years	Unlimited	No Charge	No Charge
• Transmission • Drive Axles • Propeller Shaft • Front Axle I-Beam • Crossmembers • Flywheel Housing	0-3 Years	Unlimited	No Charge	No Charge
Frame Rails	0-3 Years Years 4-5	Unlimited Unlimited	No Charge 50%	No Charge 50%
Engine Emissions Control	0-5 Years	0-160,000km	No Charge	No Charge
Cab Sheet Metal (Rust-Through)	0-5 Years	Unlimited	No Charge	No Charge
Cab Sheet Metal (Corrosion)	0-3 Years	Unlimited	No Charge	No Charge

* The warranty coverages are determined by the kilometer of the vehicle and the number of years from the delivery date. The warranty coverages are limited by whichever occurs first.

** See your Authorized Isuzu dealer or warranty booklet for full details.

All photographs, illustrations, equipment and technical data in this brochure are based on the latest information available at the time of publication. Isuzu Commercial Truck of Canada, Inc., reserves the right to make changes at any time, without notice, in prices, colors, materials, equipment, specifications and models, and to discontinue models or equipment. Some vehicles are shown with optional equipment. Some equipment is dealer installed. See your authorized Isuzu truck dealer for warranty and other details. SEE, NPR-HD, NQR and NRR are trademarks of Isuzu Motors Limited. NPR ECO-MAX is a trademark of Isuzu Commercial Truck of America, Inc.

N-Series Diesel Trucks Are Available In Six Colors And A Variety Of Wheelbases To Fit Your Application.



*Shown with optional chrome grill and with equipment from an independent supplier. Bodies shown are available through independent body companies.



www.isuzutruck.ca

© 2010 ISUZU COMMERCIAL TRUCK OF CANADA, INC.

Printed in Canada

Facebook is a registered trademark of Facebook, Inc.